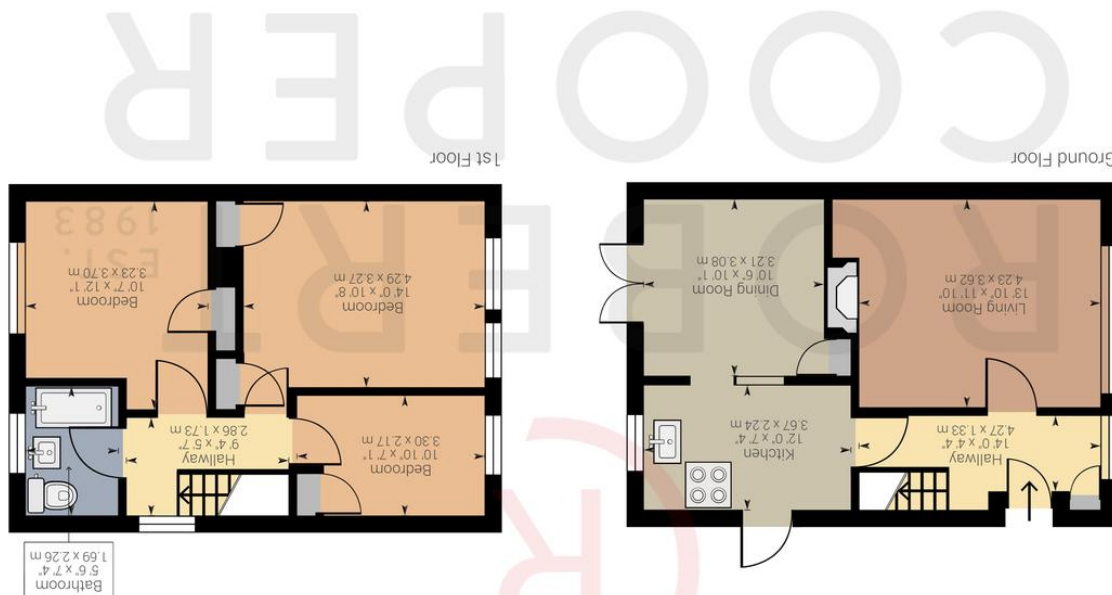


Powered by Giraffe360

Approximate net internal area: 907.52 ft² / 84.31 m²
While every attempt has been made to ensure accuracy, all measurements are approximate.
not to scale. This floor plan is for illustrative purpose only and should be used as such by any prospective tenant or purchaser.



WENTWORTH DRIVE, HA5 2PS

£599,950





A well presented three bedroom semi detached family home set on this popular residential side road providing easy access to Northwood Hills high street. Features include large private rear garden, kitchen diner, off street parking, side access, three large bedrooms and huge potential to extend stpp. The property is 0.8 miles away from Northwood Hills high street and station (Metropolitan Line), 1 mile away from Eastcote high street and station (Metropolitan & Piccadilly Line), 0.2 miles away from the sought after Coteford Primary School and 0.5 miles away from Haydon High School.

Three Large Bedrooms

Off Street Parking

Kitchen Diner

Potential To Extend STPP

Large Private Rear Garden

Side Access

Semi Detached

Catchment Area For Fantastic Schools

Walking Distance To Metropolitan Line

