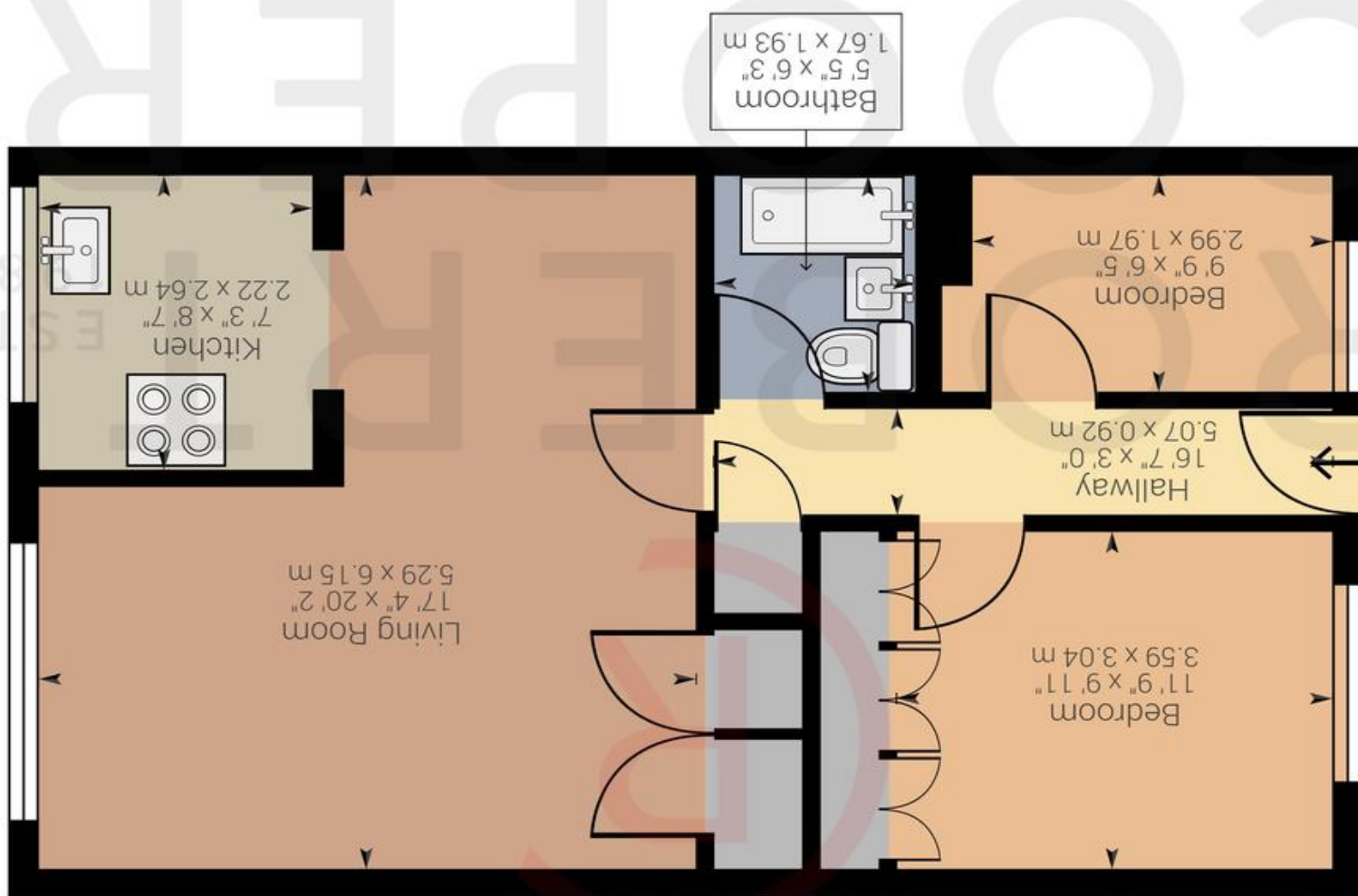


Powered by Giraffe360

Approximate net internal area: 673.15 ft² / 62.54 m²
While every attempt has been made to ensure accuracy, all measurements are approximate, not to scale. This floor plan is for illustrative purpose only and should be used as such by any prospective tenant or purchaser.



VICTORIA ROAD, HA4 0HD

£325,000





A stunning two bedroom apartment set in the heart of South Ruislip with easy access to its vast array of shops and transport links. Features include ultra modern interiors, open plan living area, two double bedrooms, long lease, built in wardrobes and high street location. The property is 0.2 miles away from South Ruislip high street and train station (Central & Chiltern Line) and 0.2 miles away from Ruislip Stars Nursery.

- Two Double Bedrooms
- Ultra Modern Interiors
- Long Lease
- Open Plan Living Area
- Built In Wardrobes
- Walking Distance To Central/Chiltern Line
- Catchment Area For Fantastic Schools

