



Eustace Building,
London, SW11 8NT
£500 Per Week

GARTON JONES.COM

Chelsea Bridge Wharf,
Eustace Building,
London, SW11 8NT

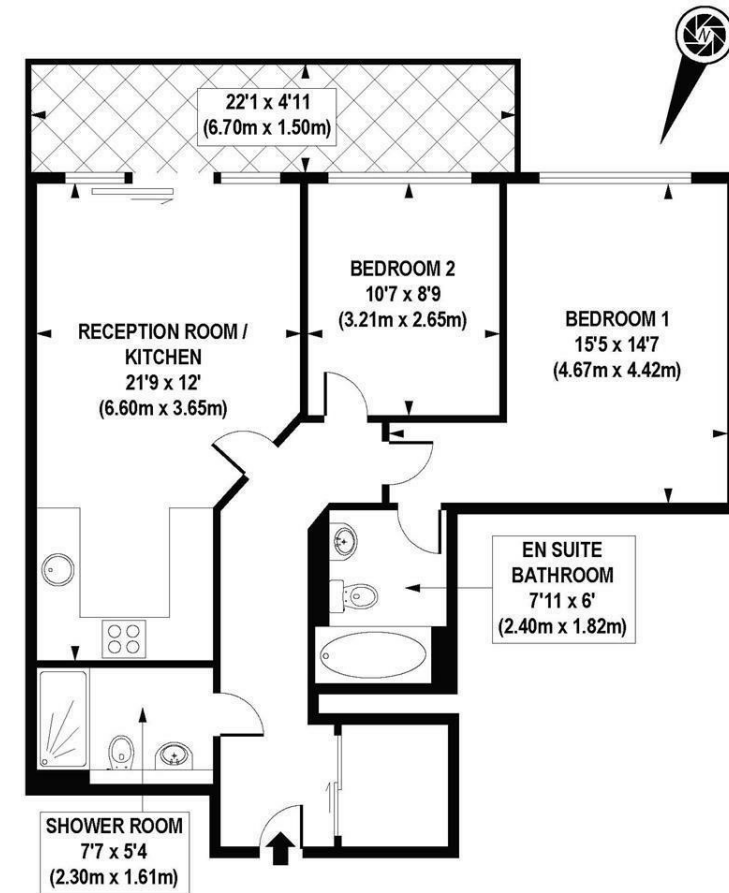
£500 Per Week



Luxury two bedroom apartment located on the fifth floor in Eustace Building at Chelsea Bridge Wharf. Open plan kitchen and lounge area with access to the terrace overlooking beautiful piazza water gardens. Big bedrooms, sandstone bathroom and separate shower room. Lots of storage and 'comfort cooling' throughout the apartment.

Chelsea Bridge Wharf is London's most glamorous riverside development located just 0.75 miles from Sloane Square and adjacent to the wide open spaces of Battersea Park and the River Thames. 24 hour concierge service and security service is located on site.

- Luxury Two Bedroom, Two Bathroom
- Views Overlooking Piazza Water Garden
- Balcony
- Open plan Kitchen and Living area
- 710 sq ft
- Fifth floor
- 24 hour Concierge
- Comfort Cooling System
- Excellent travel Links



APPROX. GROSS INTERNAL FLOOR AREA 710 sq. ft / 65.92 sq. m