



538 Sipson Road

West Drayton, UB7 0JB

£279,950

- IMMACULATE
- TWO BEDROOM
- LARGE GARDEN
- FITTED KITCHEN



S JOHN HOMES



DETAILS

ONE OF THE BEST

We are delighted to present this large two bedroom property with a garden to the market. Ideally located in West Drayton with easy access to the Town centre, transportation links including Cross rail, schools and Heathrow. The property additionally has a large reception, high spec kitchen, modern bathroom, a large bedroom, allocated parking. VIEWING IS HIGHLY RECOMMENDED

ENTRANCE HALL

Door leading into entrance hall with staircase leading to the landing

LANDING

Wooden flooring and doors to rooms

RECEPTION ROOM

15' 6" x 10' 1" (4.72m x 3.07m) Large family reception with laminate flooring and a front aspect double glazed window.

KITCHEN

15' 6" x 6' 3" (4.72m x 1.91m) Broad selection of base and eye level units with splash back tiling, tiled flooring, cooker with a stainless chimney extractor over, plumbing for washing machine and space for fridge freezer, stainless sink with mixer tap and a double glazed window.

BEDROOM

13' 11" x 9' 7" (4.24m x 2.92m) Large double bedroom with laminated flooring, and a double glazed window

BEDROOM

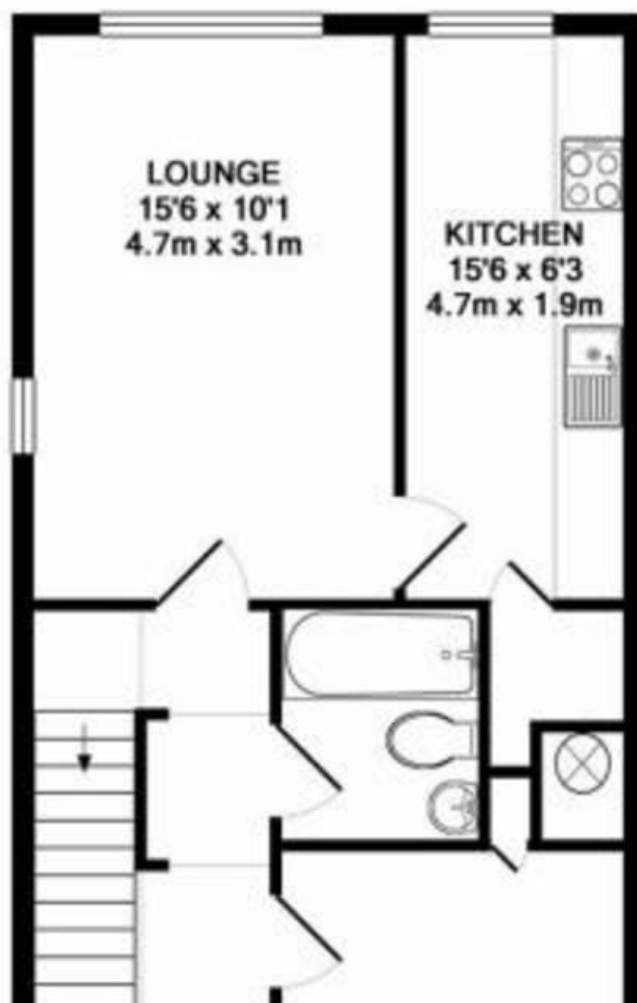
7' 9" x 4' 9" (2.36m x 1.45m) A front aspect double glazed window and laminated flooring

BATHROOM

Modern bathroom comprising of a three pieces, bath with shower over, W.C, wash basin built within a vanity unit complimented with a decorative wall tiles and floor tiles

GARDEN

Large family enclosed garden mainly laid to patio with outside lighting, sink and power. Ideal for outside living



COUNCIL TAX BAND

Tax band

TENURE

Leasehold

LOCAL AUTHORITY

OFFICE

1 Market Place
High Street
Colnbrook
Slough
Berkshire
SL3 0NF

T: 01753 683000

E: steve@sjohnhomes.co.uk

W: www.sjohnhomes.co.uk

Agents Note: Whilst every care has been taken to prepare these sales particulars, they are for guidance purposes only. All measurements are approximate and for general guidance purposes only and whilst every care has been taken to ensure their accuracy, they should not be relied upon and potential buyers are advised to recheck the measurements.