

# LAURENT

RESIDENTIAL



## Glenthams Gardens, Barnes, SW13

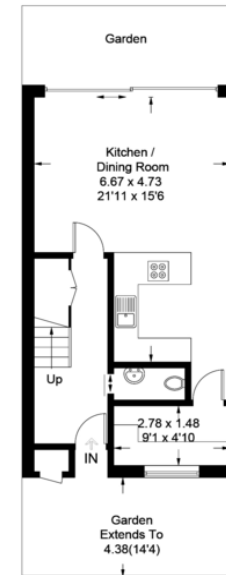
- Five double bedrooms
- Three bathrooms
- Kitchen/dining room
- Separate reception room
- Utility room
- Private garden
- Double garage
- No onward chain

A simply stunning house with unrivalled and expansive green views!! Laurent Residential are delighted to offer to the market this spectacular family home. The house sprawls out over 1861sqft and four floors offering adaptable, as well as practical, accommodation. On the ground floor you have a spacious kitchen/dining area as well as the benefit of a utility room and guest cloakroom. The first floor makes the most of the idyllic views with a pair of full size sliding windows drawing outside in. There is also a bathroom and double bedroom on this floor. To the second floor there are two more double bedrooms, a single bedroom and another bathroom. The top floor has the master suite with a range of wardrobes, a spacious en suite and another set of the large sliding windows framing the view. Attention to detail on the level of finish in this house is second to none. The house is superbly positioned for peaceful river walks as well as St Pauls School and The Harrodian. Further benefitting from no onward chain and a double garage.

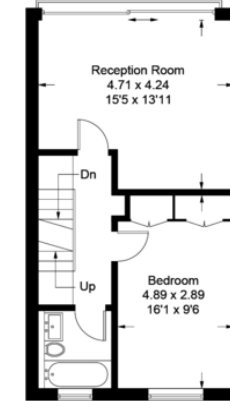


## Glenthams Gardens, London, SW13

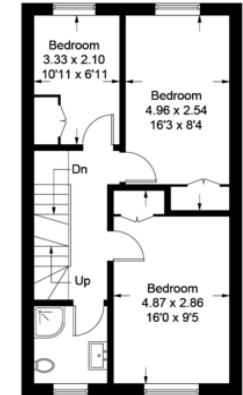
Approximate Gross Internal Area = 172.9 sq m / 1861 sq ft (Including Eaves)  
 Garage = 25.6 sq m / 275 sq ft  
 Total = 198.5 sq m / 2136 sq ft



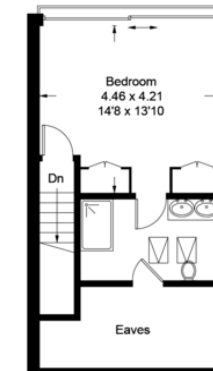
**Ground Floor**  
 480 sq ft / 44.6 sq m



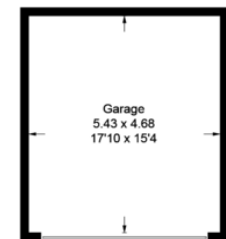
**First Floor**  
 484 sq ft / 45.0 sq m



**Second Floor**  
 478 sq ft / 44.4 sq m



**Third Floor**  
 419 sq ft / 38.9 sq m  
 (Including Eaves)



(Not Shown In Actual  
 Location / Orientation)

Essex Lodge  
 1A Barnes High Street  
 Barnes  
 London  
 SW13 9LB

**0208 876 4466**

property@laurentresidential.co.uk  
 laurentresidential.co.uk



Agents Note: Whilst every care has been taken to prepare these particulars, they are for guidance purposes only. All measurements are approximate and for general guidance purposes only and whilst every care has been taken to ensure their accuracy, they should not be relied upon and potential buyers are advised to recheck the measurements