

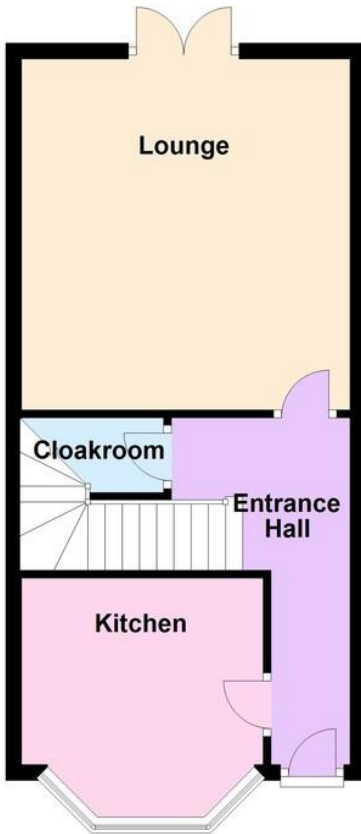


- Library Photos
- Available Early December
- End of Terrace House
- 3 Bedrooms
- En Suite Shower Room/WC
- Private Off Road Parking
- Pets Considered - £20 Pet Premium
- Council Tax 'D'
- EPC Rating: - 'C'

43a Manor Road, Angmering On Sea BN16 1QA
£1,550 pcm

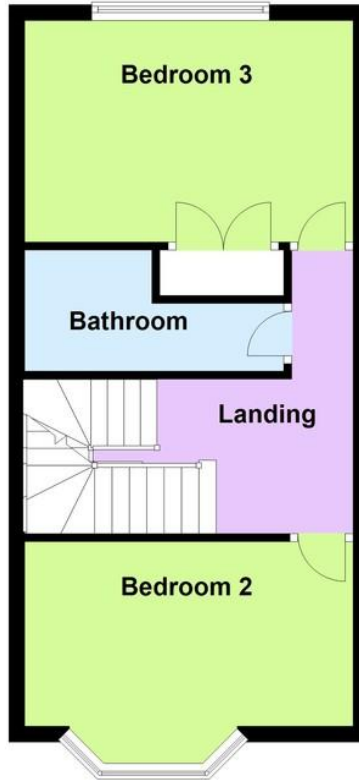
Ground Floor

Approx. 37.4 sq. metres (402.8 sq. feet)



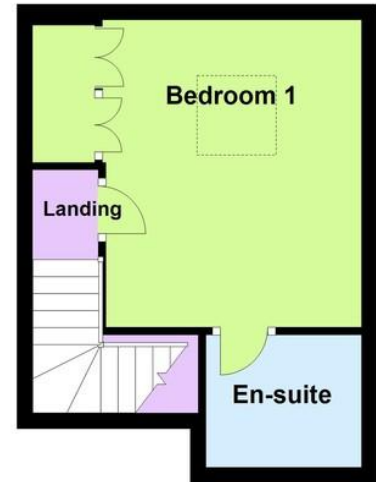
First Floor

Approx. 37.3 sq. metres (401.1 sq. feet)



Second Floor

Approx. 21.9 sq. metres (236.1 sq. feet)



Total area: approx. 96.6 sq. metres (1039.9 sq. feet)

ENTRANCE HALL

KITCHEN

10' x 7' 8" (3.05m x 2.34m)

CLOAKROOM

LOUNGE

14' 6" x 13' 11" (4.42m x 4.24m)

FIRST FLOOR LANDING

BEDROOM 2

13' 11" x 7' 8" (4.24m x 2.34m)

BEDROOM 3

14' x 9' 1" (4.27m x 2.77m)

BATHROOM/WC

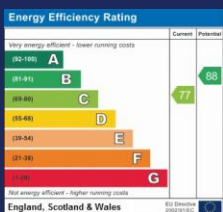
SECOND FLOOR LANDING

BEDROOM 1

13' 11" x 12' 8" (4.24m x 3.86m)
including depth of wardrobe

EN SUITE SHOWER/WC

The information and measurements contained within these details are for guidance only and do not form part of any contract.



90 THE STREET, RUSTINGTON, WEST
SUSSEX, BN16 3NJ

lettings@hawke metcalfe.co.uk

www.hawke metcalfe.co.uk

01903 850450