



**Bolingbroke Road W14**

**FINLAY  
BREWER**

# Bolingbroke Road W14

**1 Double Bedroom  
16' X 14'3 Reception  
Contemporary Kitchen  
Bathroom  
Storage  
EPC Rating C 69**

---

**A very well presented 1 double bedroom apartment occupying the raised ground floor of a handsome Victorian terraced house.**

The high-ceilinged reception is to the front with a bay window and feature fireplace. There are French doors to the rear of the reception into the bespoke galley kitchen. The generous double bedroom is to the rear with 2 sash windows and en suite bathroom. There is also a walk-in wardrobe off the bedroom. This well configured apartment of approximately 562 sq ft is flooded with light, has an abundance of original features, can be moved into without further expense and is ideally located in the heart of Brook Green.

---

**GUIDE: £495,000  
SHARE OF FREEHOLD**

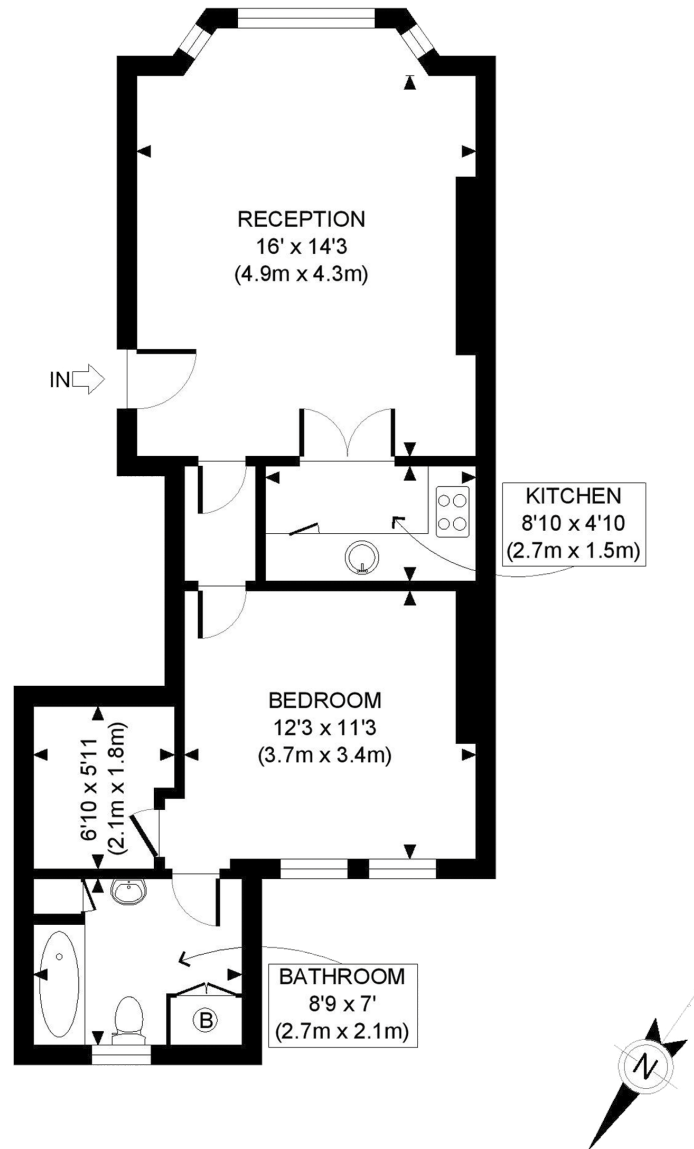
**SUBJECT TO CONTRACT  
LEASE LENGTH: 957 YRS APX  
SERVICE CHARGE: £1800 PA APX  
(INCL BUILDING INSURANCE)**







Approximate Gross Internal Area 562 Sq Ft/52 Sq M



RAISED GROUND FLOOR  
GROSS INTERNAL  
FLOOR AREA 562 SQ FT

FOR ILLUSTRATIVE PURPOSES ONLY - NOT TO SCALE  
The position & size of doors, windows, appliances and other features are approximate only.