

Bridge House, Crossmead, London SE9

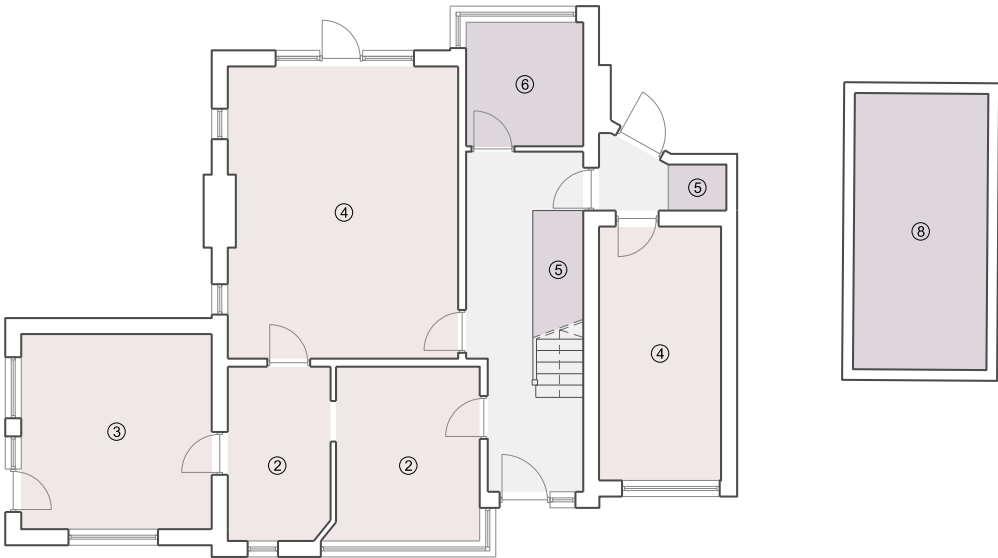
- 2 storey family home
 - 3 reception rooms
 - Kitchen/diner
 - 4 bedrooms
 - 2 bathrooms (1 ensuite)
 - Detached garage
 - Garden
- Approx 155sqm in total



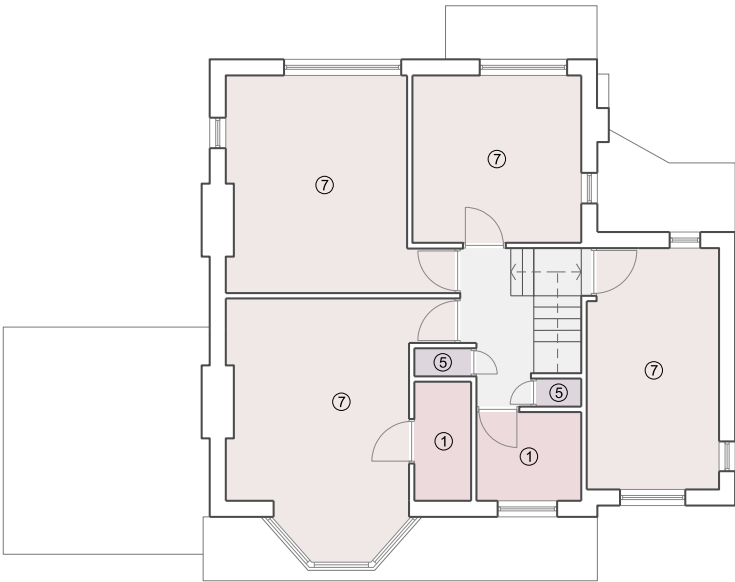
Bridge House, Crossmead, London SE9

Floorplans

- ① WC
- ② Kitchen
- ③ Dining Area
- ④ Living Area
- ⑤ Storage
- ⑥ Study
- ⑦ Bedroom
- ⑧ Garage



Ground Floor Plan



First Floor Plan