



- Chain free
- Stunning Countryside Views
- Semi Detached Bungalow
- Walking Distance to Amenities

Hillside, Church Road, Aylmerton, Norwich, NR11 8PZ

Guide Price £234,950

This semi detached bungalow lies in the pretty north Norfolk village of Aylmerton within a short drive to the seaside town of Cromer. The property consists of two double bedrooms, bathroom, large open plan living space and summer room. Garden to the front with parking and patio to the rear.



Property Description

HALLWAY

uPVC door to the front elevation, doors to the two bedrooms, bathroom and lounge.

KITCHEN AREA

uPVC double glazed door and window to the rear elevation, range of wall and base units with work surface over, stainless steel sink with drainer, inset electric oven with inset electric hob. Part tiled walls wood effect flooring and spotlights.

LOUNGE / DINING AREA

uPVC double glazed windows to the side and rear elevation, multi fuel wood burner, wood effect flooring, wall mounted radiator, spotlights and open plan door way to the sun room.

SUN ROOM

uPVC windows to side and rear, uPVC windows to side, wall mounted radiators and wood effect flooring.

BEDROOM

uPVC double glazed window to the rear, carpeted flooring and wall mounted radiator.

BEDROOM

uPVC double glazed window to the front, carpeted flooring and wall mounted radiator.

BATHROOM

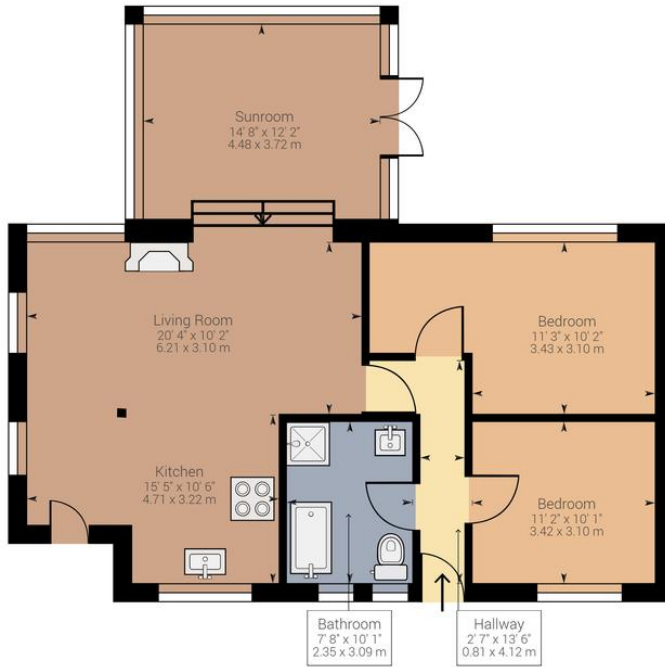
uPVC frosted double glazed window to the front, 4 piece bathroom suite comprising: panelled bath, large shower cubicle with tiled walls, pedestal wash hand basin, low level wc and tiled flooring.

OUTSIDE

The property is set in an elevated position and mainly laid to lawn with stunning views of the north Norfolk countryside to the front.







Approximate net internal area: 981.61 ft² / 91.19 m²

While every attempt has been made to ensure accuracy, all measurements are approximate, not to scale. This floor plan is for illustrative purpose only and should be used as such by any prospective tenant or purchaser.

Powered by Giraffe360

%epcGraph_c_1_334%

15 West Street, Cromer, Norfolk,
NR27 9HZ

henleysea.co.uk
01263 511111
cromer@henleysea.co.uk

Agents Note: Whilst every care has been taken to prepare these particulars, they are for guidance purposes only. All measurements are approximate are for general guidance purposes only and whilst every care has been taken to ensure their accuracy, they should not be relied upon and potential buyers/tenants are advised to recheck the measurements