



Hallfield Estate, London

£400 Per Week

Bright spacious 1 bedroom flat with south-west aspect. Newly refurbished to high standard. Situated on 6th floor (with lifts) in the iconic Hallfield Estate. Reading House is located close to Bayswater at the edge of the estate with easy access to shops of Queensway, Westbourne Grove, all major supermarkets (including Waitrose), tube and bus transport and the open spaces of Hyde Park.

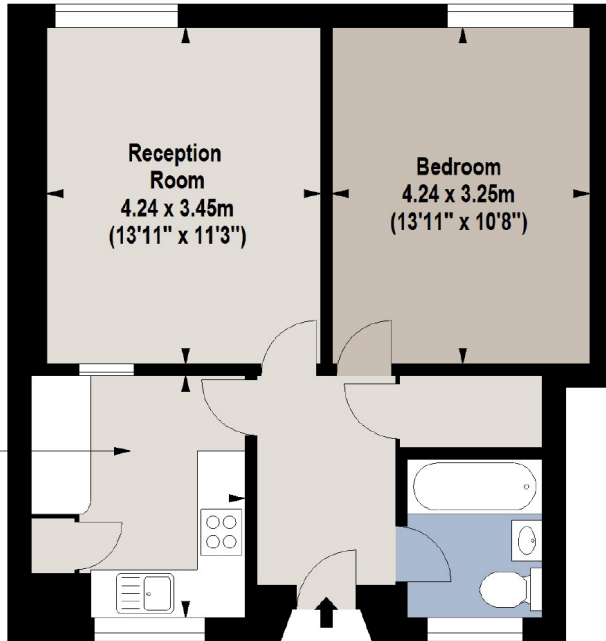
Large, sunny reception, spacious bright double bedroom, well fitted modern eat-in kitchen, contemporary bathroom, generous storage. Fully furnished.

Viewing highly recommended.

Available now.



Hallfield Estate, London



Sixth Floor



For Identification Purposes Only. Not To Scale. © www.totalvista.uk 2021

Reading House,
Hallfield Estate, W2

Approx. Gross Internal Area
48.49 Sq M - 522 Sq Ft



HYDE PARK AGENCIES LIMITED

Estate agents, valuers, property consultants