



WESTVILLE ROAD W12



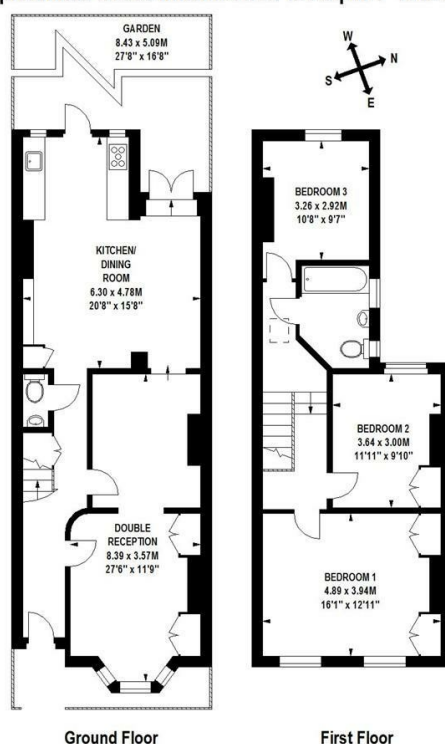


- 3 BEDROOMS • SPACIOUS DOUBLE RECEPTION • KITCHEN BREAKFAST ROOM • FAMILY BATHROOM • SOUTH WEST FACING GARDEN • CLOSE TO SHOPS AND AMENITIES • CLOSE TO RAVENSCOURT PARK • UNFURNISHED • AVAILABLE 22ND JULY

Beautiful 3 bedroom family house, with spacious double reception, kitchen breakfast room with wooden floors and generous dining area, family bathroom and south westerly facing garden. Located on a quiet residential road, close to the shops and amenities in Askew village, and a very short walk to Ravenscourt Park. Unfurnished, available 22nd July.

Westville Road, W12

Approximate Gross Internal Area 121 sq m / 1302 sq ft



Floor Plan produced for Finlay Brewer by Mays Floorplans © . Tel 020 3397 4594
 Illustration for identification purposes only, not to scale
 All measurements are maximum, and include wardrobes and window bays where applicable

138 Shepherds Bush Road, London, W6 7PB
 Tel: 020 7371 4071 lettings@finlaybrewer.co.uk