

Ropewalk Court, Derby Road, Nottingham, NG1 5AD



£775 PCM

Belvoir Nottingham Central are proud to present this fantastic 2 double bedroom furnished apartment in the popular Ropewalk court available NOW!!!!

The property is a furnished 2 bed apartment, the bathroom has a full suite with shower above the bath and the kitchen is fully stocked with Fridge, washer-drier, oven, hob and dishwasher.

The property is double glazed throughout and also has an allocated Secure parking space.

Please follow the link below to watch the virtual tour of this property:

<https://drive.google.com/drive/folders/1iOri0gs66gwSTpzb3yO8-ZAeSVP94m8?usp=sharing>

Call Belvoir today on 0115 985 9259 for further details or to arrange a viewing...

Holding deposit: Equal to 1 weeks rent
Dilapidation deposit Equal to 5 weeks rent
Tenancies with Pets charged at an increased rent of 6%
Late rent is charged @ £ 3% above the bank of England base rate of inflation
Key replacement £ 50.00
Changes to contracts £ 50.00
Change of sharer £ 75.00
Permitted occupier £ 75.00
Surrender of Tenancy £418.80
A 0% Deposit scheme is also available on this property ask our team for more details...

Tenant Protection

We are a member of NALS & Safe Agent, which is a client money protection scheme, and also a member of The Property Ombudsman, which is a redress scheme. You can find out more details on our website or by contacting us directly.



BELVOIR!

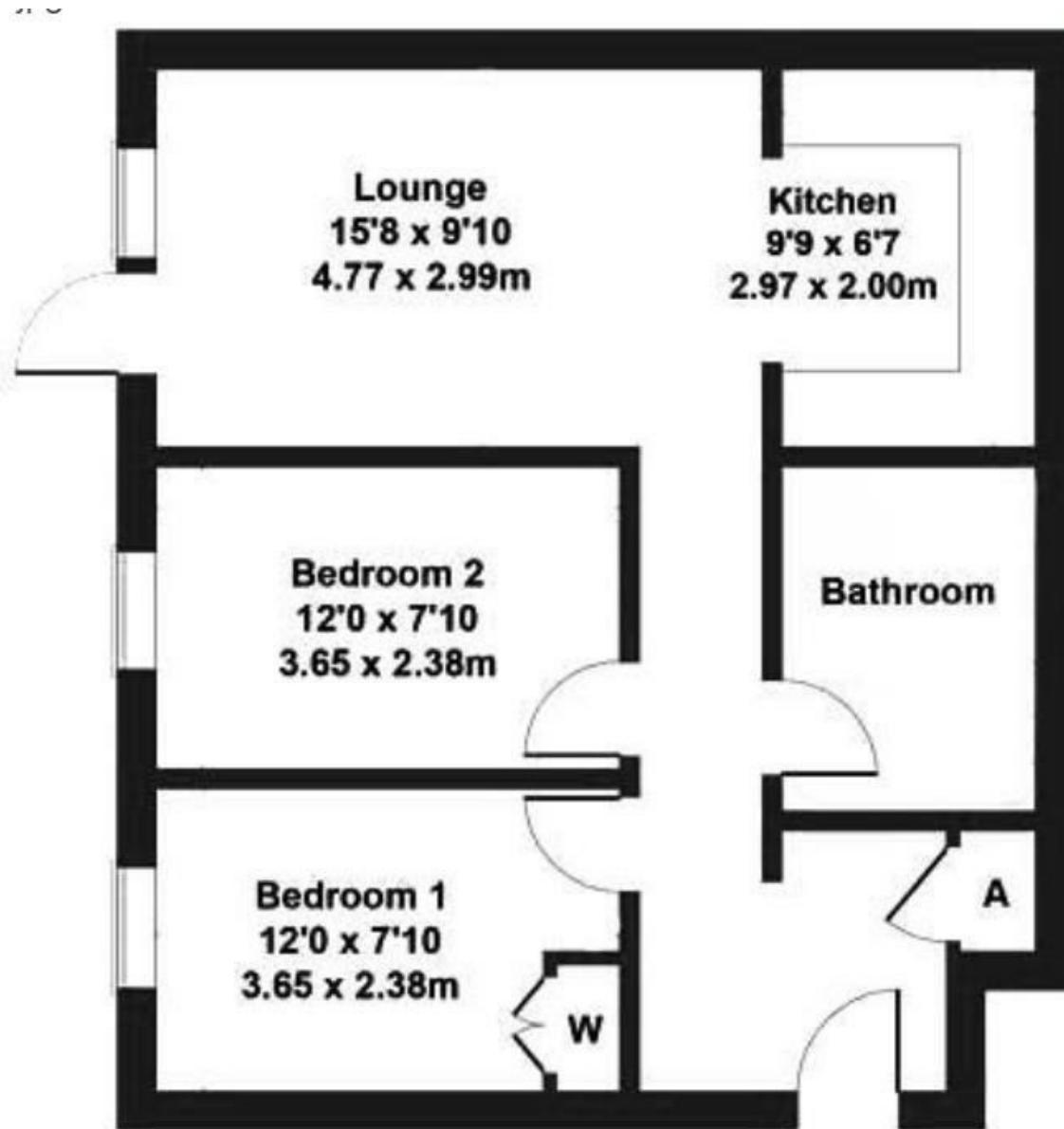
Nottingham Central Lettings
23-25 Market Street, Nottingham, NG1 6HX

Call: 0115 985 9259

belvoir.co.uk

BELVOIR!

Nottingham Central Lettings
23-25 Market Street, Nottingham, NG1 6HX



Energy Efficiency Rating		
	Current	Potential
Very energy efficient - lower running costs		
(92 plus) A		
(81-91) B		
(69-80) C	77	81
(55-68) D		
(39-54) E		
(21-38) F		
(1-20) G		
Not energy efficient - higher running costs		
England & Wales		EU Directive 2002/91/EC
Environmental Impact (CO ₂) Rating		
	Current	Potential
Very environmentally friendly - lower CO ₂ emissions		
(92 plus) A		
(81-91) B		
(69-80) C		
(55-68) D	68	70
(39-54) E		
(21-38) F		
(1-20) G		
Not environmentally friendly - higher CO ₂ emissions		
England & Wales		EU Directive 2002/91/EC

BELVOIR!

Nottingham Central Lettings
23-25 Market Street, Nottingham, NG1 6HX



Call: 0115 985 9259

belvoir.co.uk