

Ascend

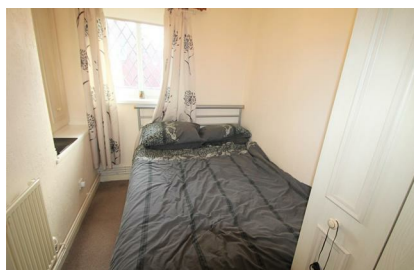
Built on higher standards



40 Waterslea Manchester M30 0SR

- First floor apartment
- Two bedrooms
- Driveway and garage parking
- Walking distance to Patricroft Train Station
- Unfurnished
- Gas Central Heating
- Cul-de-sac location
- Private entrance parking
- Close to Monton Village and Intu Trafford Centre
- *Available 23rd June*

£675 PCM



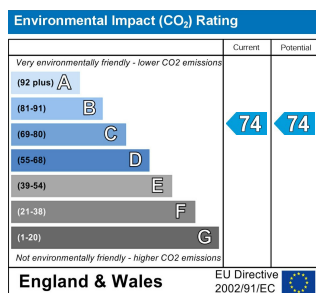
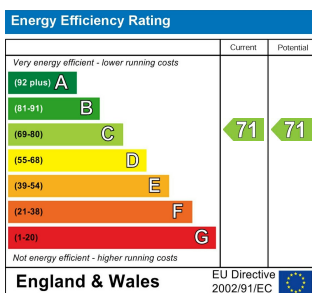
We are delighted to offer for rent this well presented two bed apartment located on the sought after residential estate of Waterslea in Eccles.

Within walking distance to Patricroft Train Station and Monton Village, this first floor apartment sits at the bottom of a quiet cul-de-sac and benefits from a private entrance, driveway and garage.

Internally the property offers accommodation comprising: entrance hallway with stairs to the first floor, spacious kitchen diner, lounge to the rear, two bedrooms and a modern bathroom. Naturally bright throughout, the apartment also has gas central heating, uPVC double glazed windows and ample storage.

For more information or to book a viewing, please call the office. Images are for marketing purposes.

Available 23rd June



Ascend
Built on higher standards

0161 707 7584

192 Monton Road, Monton, Manchester, M30 9PY

monton.sales@ascendproperties.com,
monton.lettings@ascendproperties.com
www.ascendproperties.com



These particulars, whilst believed to be accurate are set out as a general outline only for guidance and do not constitute any part of an offer or contract. Intending purchasers should not rely on them as statements of representation of fact, but must satisfy themselves by inspection or otherwise as to their accuracy. No person in this firm's employment has the authority to make or give any representation or warranty in respect of the property