

TATES

Residential Sales & Lettings



Avonmore Road, London W14 8RT

£2,490,000

- Complete Period House
- S.W. Garden
- Freehold
- Close to Kensington Olympia
- Six Bedrooms
- Substantial Accommodation
- Close to High Street Kensington
- West Kensington Tube (District Line)

Avonmore Road, W14

Approximate gross internal area

2,723 sq ft / 252.97 sq m

(Including Eaves Storage & Vault)

Eaves Storage

73 sq ft / 6.78 sq m

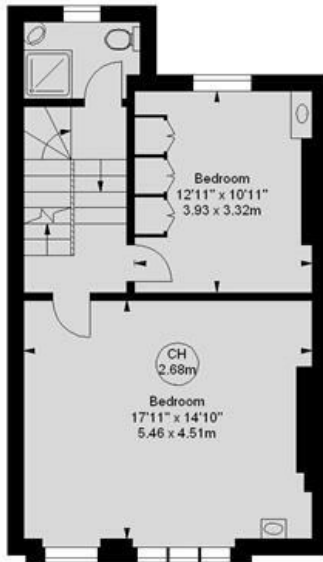
Vault

30 sq ft / 2.79 sq m

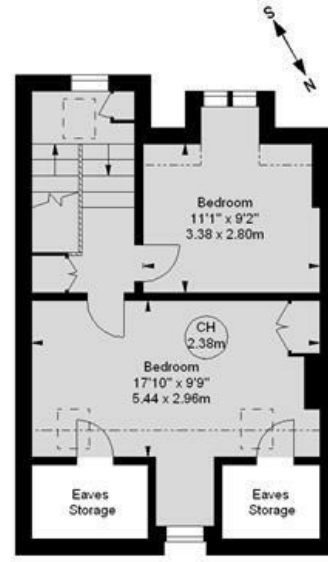
Key :
CH - Ceiling Height



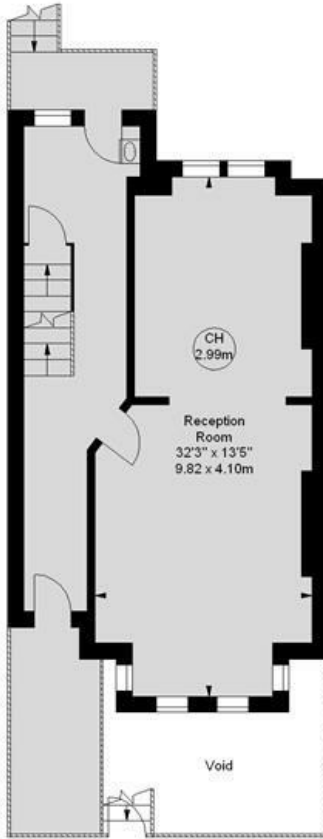
Lower Ground Floor
580 sq ft



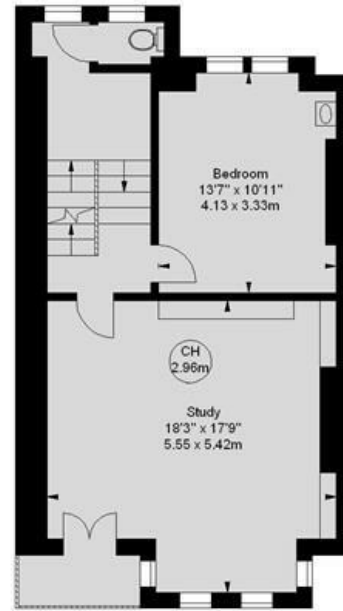
Second Floor
531 sq ft



Third Floor
391 sq ft



Raised Ground Floor
554 sq ft



First Floor
564 sq ft

Illustration For Identification Purposes Only. Not To Scale
*Floorplan Drawn According To RICS Guidelines

Energy Efficiency Rating		
	Current	Potential
Very energy efficient - lower running costs		
(92 plus) A		
(81-91) B		80
(69-80) C		
(55-68) D	55	
(39-54) E		
(21-38) F		
(1-20) G		
Not energy efficient - higher running costs		
England & Wales		EU Directive 2002/91/EC

Whilst these particulars are believed to be correct, no guarantee can be given for the measurements, appliances or services. It is our recommendation that all are tested. These are not intended to form part of any contract. Tate's accept no responsibility for their accuracy.

135 Hammersmith Rd London W14 0QL

T. 020 7602 6020 F. 020 7602 9522

mail@tatesestates.co.uk

tatesestates.co.uk

Tates (Agents) Ltd. Registered in England and Wales No. 2356337

Registered Office: 4th Floor Imperial House, 15 Kingsway London WC2B 6U

