



Nell Gwynn House, Sloane Avenue, London, SW3 **£420 Per Week* Fees Apply**

ZERO DEPOSIT AVAILABLE

VIDEO VIEWING: A modern one bedroom apartment situated in the heart of Chelsea. Comprising of an open plan layout, fully fitted kitchen lounge area, double bedroom with built in wardrobe and bathroom with overhead shower. Benefitting from having lots of natural light, a 24 hour concierge and wooden floors.

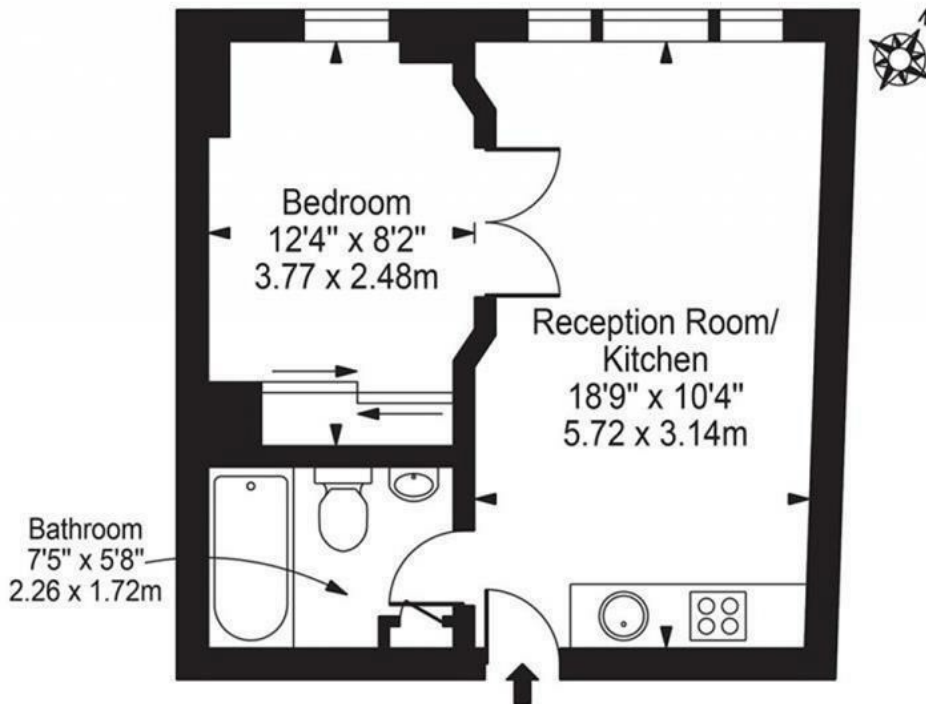
Offered furnished, suitable for Students and Professionals.

Sloane Avenue is conveniently situated in the heart of Chelsea within a short walking distance to the many fashionable boutiques along Fulham Road with King's Road and Sloane Square giving further access to the many shops, bars, restaurant's and travel links (Zone1).

- ZERO DEPOSIT REQUIRED
- Large double bedroom
- Spacious reception
- Fully fitted kitchen
- Bathroom with overhead shower
- Lift access
- Portered building
- Located close to Sloane Square Station

Nell Gwynn House, SW3 3BG

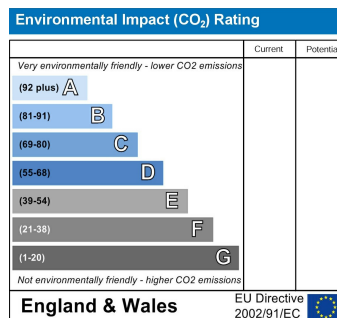
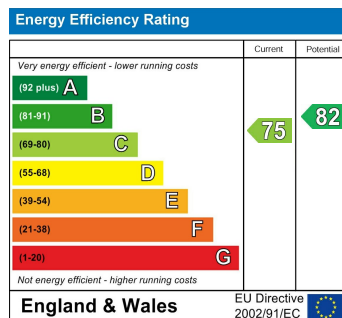
Approx. Gross Internal Area 342 Sq Ft - 31.77 Sq M



Eighth Floor

For Illustration Purposes Only - Not To Scale

This floor plan should be used as a general outline for guidance only and does not constitute in whole or in part an offer or contract. Any intending purchaser or lessee should satisfy themselves by inspection, searches, enquiries and full survey as to the correctness of each statement. Any areas, measurements or distances quoted are approximate and should not be used to value a property or be the basis of any sale or let.



Admin fee: £ inclusive of VAT | Reference Fee: £ inclusive of VAT per application | Inventory Fee may also apply