



LANGSTONE, NEWPORT

Offers over **£350,000**



43A BLOSSOM CLOSE

Langstone, Newport, NP18 2LT



Beautifully presented four bed property
No Chain
Very well presented garden to the front and rear

This beautifully presented four bedroom detached house is located in the increasingly popular area of Langstone. The property is situated in a very quiet cut-de-sac close to locals shops and amenities, with great links to the M4 Corridor and also within a short distance to the Celtic Manor Resort and Newport Retail and leisure Park.

The property itself comprises of living room, study, diner, kitchen, internal garage, and downstairs WC. To the first floor you have three double bedrooms and a single bedroom, master en suite and family bathroom. **VIEWINGS HIGHLY RECOMMENDED!**



Offers over
£350,000



KEY FEATURES

- No Chain
- Detached
- Four bedrooms
- Internal garage
- Generous garden
- Great location



STEP INSIDE



ENTRANCE HALL

Laminated flooring. Radiator. Power points. Access into dining room, cloakroom, kitchen, living room, internal garage and stairs to first floor.

DINING ROOM

3.05m x 2.58m (10'0" x 8'6")

Carpeted. Power points. Radiator. Double glazed window facing front aspect.

CLOAKROOM

Laminated flooring. Wash hand basin, WC and tiled splash back. Radiator. Double glazed window facing side aspect.

KITCHEN

3.50m x 2.88m (11'6" x 9'5")

Laminated flooring. Fitted wall and base units. Integrated fridge, washing machine and oven with gas hob and over head extractor. Stainless steel sink. Walnut worktop. Power points. Double glazed window facing rear aspect. Door to rear garden. Radiator.

INTERNAL GARAGE

5.14m x 2.52m (16'10" x 8'3")

Up and over door. Power points. Space for one vehicle and access into study.

STUDY

2.95m x 2.47m (9'8" x 8'1")

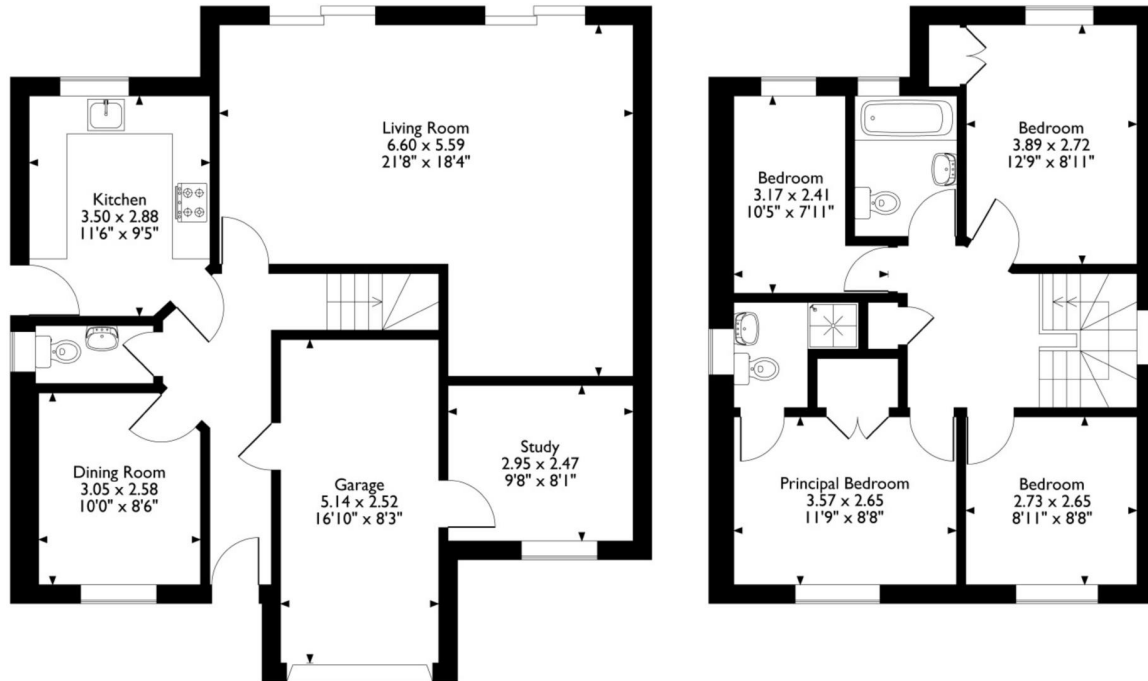
Carpeted. Radiator. Power points. Access to boiler. Double glazed window facing front aspect.

LIVING ROOM

6.60m x 5.59m (21'8" x 18'4")

Generous size living room. Laminated flooring. Two radiators. Power points. Two double glazed sliding French doors to rear garden.

43A Blossom Close, Langstone, Newport
 Approximate Gross Internal Area
 129 Sq M / 1384 Sq Ft



Ground Floor

First Floor

Please note that the location of doors, windows and other items are approximate and this floorplan is to be used for illustrative purposes only. Unauthorized reproduction is prohibited.

Stairs to FIRST FLOOR and LANDING

Carpeted. Radiator. Double glazed window facing side aspect. Access into four bedrooms family bathroom and access to loft hatch.

BEDROOM

3.57m x 2.56m (11'9" x 8'5")

Carpeted. Double glazed window facing front aspect. Radiator. Power points. Built in wardrobe. Access into en suite shower room.

EN SUITE

Tiled flooring. Tiled splash back, WC, wash hand basin and shower cubical. Radiator. Double glazed window facing side aspect.

BEDROOM TWO

3.89m x 2.72m (12'9" x 8'11")

Laminated flooring. Radiator. Double glazed window facing rear aspect. Power points. Built in storage cupboard.

BEDROOM THREE

2.73m x 2.65m (8'11" x 8'8")

Laminated flooring. Radiator. Power points. Double glazed window facing front aspect.

BEDROOM FOUR

3.17m x 2.41m (10'5" x 7'11")

Carpeted. Power points. Radiator. Double glazed window facing rear aspect.

FAMILY BATHROOM

Tiled flooring. Tiled splash back. Wash hand basin, WC and bath. Double glazed window facing rear aspect. Radiator. Shaver point.

STEP OUTSIDE



FRONT GARDEN

Well presented, patio laid to lawn, drive way with access into garage, gate to rear garden.

REAR GARDEN

Very generous size split level rear garden, very well maintained and beautifully presented, perfect for families and entertaining. The garden is also south west facing with patio laid to lawn.

INFORMATION

Postcode: NP18 2LT

Tenure: Freehold

Tax Band: F

Heating: Gas

Drainage: Mains

EPC: TBC





DIRECTIONS

East bound on the A48 off the Coldra round about, take the second exit at the next round about onto Chepstow road, and then take the second right onto Blossom Close, take the first right, and the property is on the left hand side.



30 High Street, Chepstow, NP16 5LJ
01633 449884
newport@archerandco.com
www.archerandco.com



All measurements are approximate and quoted in imperial with metric equivalents and for general guidance only and whilst every attempt has been made to ensure accuracy, they must not be relied on. The fixtures, fittings and appliances referred to have not been tested and therefore no guarantee can be given that they are in working order. Floorplans and photographs are reproduced for general information and it must not be inferred that any item shown is included with the property.