



Coopers Meadow Keresley Coventry CV7 8RL

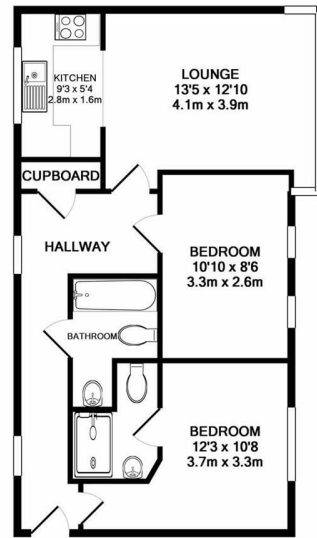
£700 Per Month

TO LET

- Close to public transport
- Excellent Transport Links
- Ground Floor Apartment
- One Allocated Parking Space
- Two Bedroom Flat
- Ensuite To Master Bedroom
- Family Bathroom
- Modern Kitchen
- Open Plan Reception
- Available End June 2021

THE PROPERTY

IMMACULATE LUXURY APARTMENT | GROUND FLOOR|TWO DOUBLE BEDROOMS | EN-SUITE TO MASTER BEDROOM | ALLOCATED PARKING | AVAILABLE FROM END JUNE 2021 | KITCHEN APPLIANCES INCLUDED A stunning, ground floor apartment on the popular Coopers Meadow development.



TOTAL APPROX. FLOOR AREA 572 SQ.FT. (53.1 SQ.M.)
Made with Metropix ©2017

SITUATION

Directions