



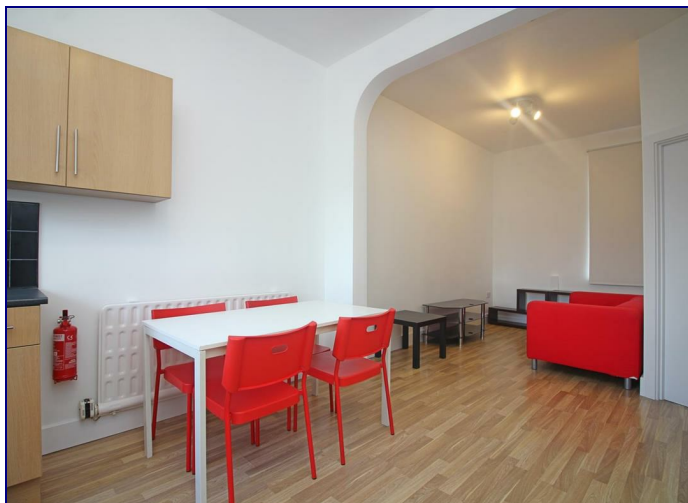
[www.kings-group.net](http://www.kings-group.net)


248 Hoe Street  
Walthamstow E17 3AX  
Tel: 020 8521 1122


Lea Bridge Road, London, E10 6AW  
£1,100 Per Month

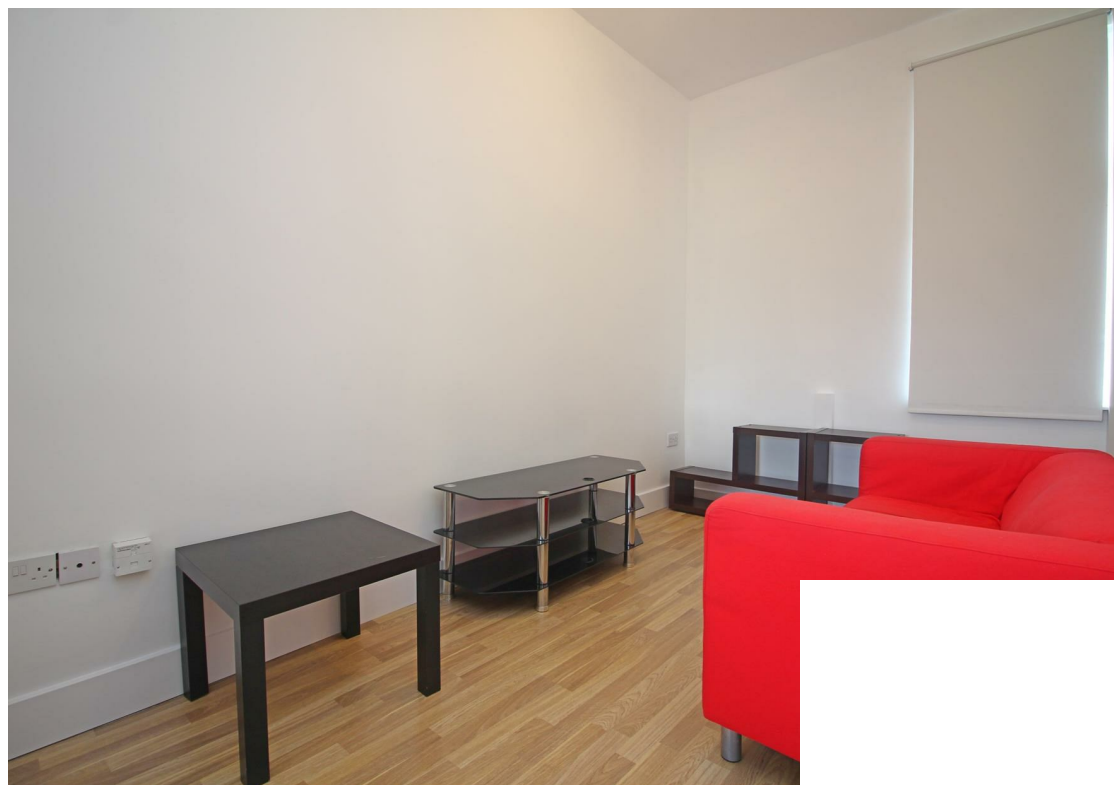
This impressive 1 bed apartment, located moments away from shops, bars and restaurants of Baker arms and Lea Bridge Road boast a modern living area with a bright and open plan living room with a good size bedroom.

Lea Bridge Road boasts an ideal location for nearby shops and restaurants. The local amenities are all within walking distance while the Leyton Midlands and Walthamstow Central station are both close by offering frequent services into central London.



Energy Efficiency Rating		
	Current	Potential
<i>Vary energy efficient - lower running costs</i>		
(92 plus) <b>A</b>		
(81-91) <b>B</b>		
(69-80) <b>C</b>		
(55-68) <b>D</b>		
(39-54) <b>E</b>		
(21-38) <b>F</b>		
(1-20) <b>G</b>		
<i>Not energy efficient - higher running costs</i>		
<b>England &amp; Wales</b>	EU Directive 2002/91/EC	

Environmental Impact (CO <sub>2</sub> ) Rating		
	Current	Potential
<i>Vary environmentally friendly - lower CO2 emissions</i>		
(92 plus) <b>A</b>		
(81-91) <b>B</b>		
(69-80) <b>C</b>		
(55-68) <b>D</b>		
(39-54) <b>E</b>		
(21-38) <b>F</b>		
(1-20) <b>G</b>		
<i>Not environmentally friendly - higher CO2 emissions</i>		
<b>England &amp; Wales</b>	EU Directive 2002/91/EC	







Associated Offices in London, Essex and Hertfordshire  
Kings Head Office Tudor Lodge, Burton Lane, Goffs Oak, Hertfordshire EN7 6SY Tel: 01707-872000

