



Longfield, Harlow, CM18 6JY

Offers In The Region Of £270,000 Freehold

Kings Group are delighted to offer this *CHAIN FREE* TWO BEDROOM TERRACED HOUSE for sale located in Longfield, Harlow. In our opinion this property would make a perfect first time buyer purchase for investors or any young family looking to make a house their home. Located less than 5 minutes drive from the M11 and less than 10 minutes drive from Harlow Town Train Station this property has great access into London and other major cities making it ideal for commuters. The property is less than 10 minutes walk to Passmores Academy and Purford Green Primary School giving you brilliant schooling opportunities and with Bush Fair Shopping Centre about a 10 minute walk away you have great access to the local amenities including small supermarket, takeaway restaurants, pharmacy, pub and salon. The property comprises spacious entrance hall, lounge / diner, kitchen, three bedrooms, first floor family bathroom and good sized garden.

Longfield, Harlow, CM18 6JY

Entrance Hall 19'47 x 3'86 plus 3'82 x 7'10 (5.79m x 0.91m plus 0.91m x 2.39m)

Gas / electric meter cupboard, carpet, telephone point, power points

Lounge 11'85 x 6'71 plus 9'61 x 12'05 (3.35m x 1.83m plus 2.74m x 3.78m)

Double glazed window to rear aspect, single radiator, fireplace with brick surrounding, TV aerial point, power points, textured ceiling

Kitchen 6'77 x 12'23 (1.83m x 3.66m)

Double glazed window to rear aspect, single radiator, tiled flooring, range of wall and base units with roll top work surfaces, tiled splash backs, sink with drainer unit, freestanding electric oven with electric hob, plumbed for washing machine, space for fridge / freezer, double glazed door leading to garden, power points

First Floor Landing 13'31 x 5'38 (3.96m x 1.52m)

Two double glazed windows to front aspect, single radiator, carpet, power points

Bedroom One 9'94 x 13'58 plus 4'51 x 1'31 (2.74m x 3.96m plus 1.22m x 0.30m)

Double glazed window to rear aspect, single radiator, carpet, power points, textured ceiling

Bedroom Two 7'71 x 13'58 plus 7'16 x 1'29 (2.13m x 3.96m plus 2.13m x 0.30m)

Single glazed window to rear aspect, single radiator, carpet, power points, loft access

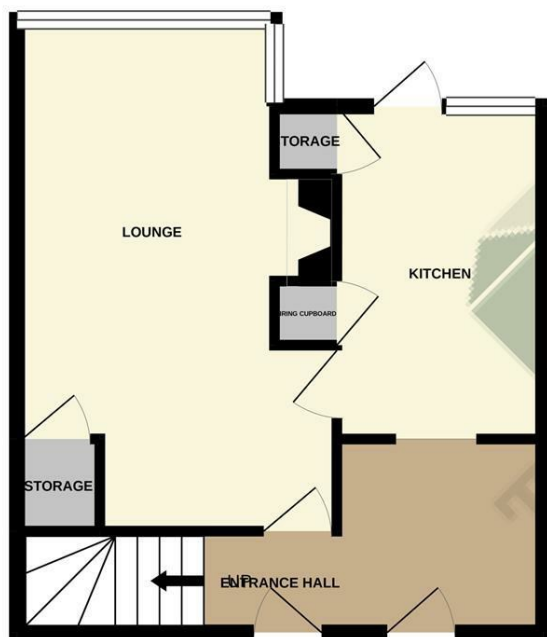
Bathroom 5'75 x 5'75 (1.52m x 1.52m)

Double glazed window, single carpet, panel enclosed bath with electric shower, low level

Garden

Mainly laid to lawn, rear access, timber shed

GROUND FLOOR
37.1 sq.m. (399 sq.ft.) approx.



1ST FLOOR
34.9 sq.m. (375 sq.ft.) approx.



TOTAL FLOOR AREA : 72.0 sq.m. (775 sq.ft.) approx.

Whilst every attempt has been made to ensure the accuracy of the floorplan contained here, measurements of doors, windows, rooms and any other items are approximate and no responsibility is taken for any error, omission or mis-statement. This plan is for illustrative purposes only and should be used as such by any prospective purchaser. The services, systems and appliances shown have not been tested and no guarantee as to their operability or efficiency can be given.
Made with Metropix ©2021