



Lumiere Building, 38 City Road East, Manchester

£1,100 PCM

This cracking 2-bedroom apartment sits within the ever-popular Lumiere Building, overlooking the River Medlock. Apartments simply don't get much more stylish than this!

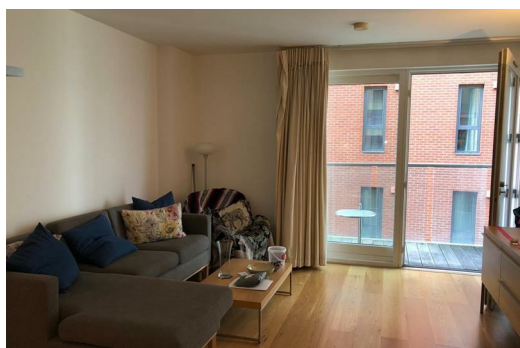
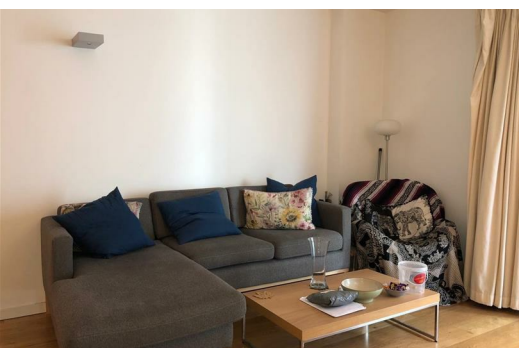
Inside you'll discover high-spec fittings and a contemporary design, along with a large open-plan lounge/kitchen area with integrated stainless steel appliances. The spacious double bedrooms provide the perfect haven to relax away from the bustle of the city and the slick tiled bathroom has been finished to an incredibly high standard.

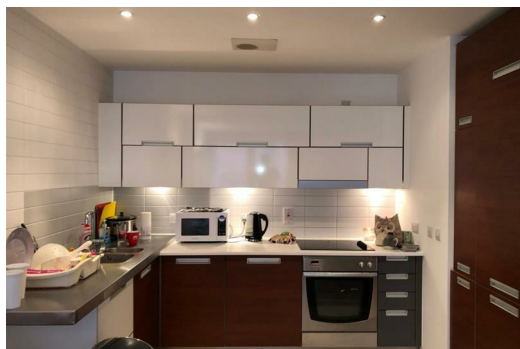
If that wasn't enough, you also have access to a rooftop Jacuzzi, an exclusive residents' gym on the top floor and stunning water gardens - this really is modern city living at its best.

This apartment is perfectly located just a 5-minute walk from Deansgate, Castlefield and everything else Manchester city centre has to offer. Whether it's for work, study or play, you really are in the ideal spot. Practically on your doorstep you'll find a local Sainsbury's, Pizza Express and popular hangouts The Laundrette and Junkyard Golf - there's no end of things to do and see!

This one won't be on the market for long, so give our team a call today to book your viewing, and just so you know, the images are for marketing purposes only, so the internal fixtures and fittings may vary.

Available 23rd June 2021





Energy Efficiency Rating		Environmental Impact (CO ₂) Rating	
Current	Potential	Current	Potential
<div> <div></div> <div></div> <div></div> <div></div> <div></div> <div></div> <div></div> <div></div> <div></div> <div></div> </div>			
80	85	76	78
England & Wales		England & Wales	