



Norden House, LONDON, E2 0EQ

£345,000

Elms Estates have the pleasure of being able to offer to the market For Sale this Two Double Bedroom 3rd Floor Apartment situated directly off of Bethnal Green Road and within 200 Meters of Bethnal Green (Central Line) Tube Station.

The property is located in the heart of Bethnal where you can enjoy the busy hustle and bustle of the East End with easy access to all of the Restaurants, Bars, Shops, Markets, Gyms, Parks, Galleries and Museums this Exciting Area has on offer. The suburb Transport Links ensure that the whole of the Greatest Capital City are at your disposal.

Internally the property has two double bedrooms with a good size lounge and separate kitchen. The property also benefits from a bathroom with a separate w/c and double glazing through out.

Norden House is offered to the market on a chain free basis. An early internal inspection is highly recommended in order to avoid disappointment.

Norden House, LONDON, E2 0EQ

Reception

11'10" x 12'10" (3.62 x 3.92)



Kitchen

7'0" x 8'10" (2.15 x 2.71)



Bedroom One

8'9" x 12'10" (2.67 x 3.92)

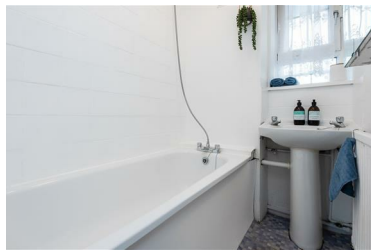


Bedroom Two

8'0" x 12'10" (2.46 x 3.92)



Bathroom



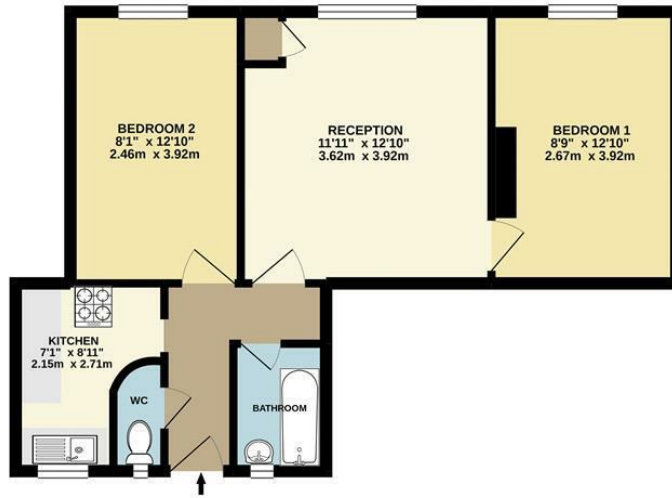
Separate WC



Norden House, E2



Approximate Gross Internal Area 499 sq. ft - 46.3 sq. m.



3rd Floor Flat
Total Floor Area 499 sq. ft. - 46.3 sq. m. Approx.

For Illustration Purposes Only - Not To Scale.
lpaplus.com



Energy Efficiency Rating		Current	Potential
Very energy efficient - lower running costs			
(92 plus)	A		
(81-91)	B		
(69-80)	C		
(55-68)	D		
(39-54)	E		
(21-38)	F		
(1-20)	G		
Not energy efficient - higher running costs			
		69	80
England & Wales		EU Directive 2002/91/EC	

Environmental Impact (CO ₂) Rating		Current	Potential
Very environmentally friendly - lower CO ₂ emissions			
(92 plus)	A		
(81-91)	B		
(69-80)	C		
(55-68)	D		
(39-54)	E		
(21-38)	F		
(1-20)	G		
Not environmentally friendly - higher CO ₂ emissions			
		70	84
England & Wales		EU Directive 2002/91/EC	