



Forest Edge Court

Thetford, Norfolk, IP24

Omar Middleton (45x20)



0800 954 1288

sales@sellmygroup.co.uk



£265,000

Great Hockham, Thetford, Norfolk, IP24

In this Omar Middleton bungalow park home, the living area features an electric fireplace with stylish surround and coordinating furniture. The spacious kitchen includes integrated appliances including fridge-freezer, washing machine and dishwasher. The two double bedrooms have fitted furniture and the master bedroom has a walk-in wardrobe and an en suite with a shower cubicle.

The park embodies a relaxed lifestyle with a welcoming atmosphere. Set within beautifully landscaped grounds, ideal for making the most of wonderful walking trails as well as local amenities. Every home enjoys modern full furnishings, parking, and a welcoming community of like-minded residents.

This stunning new residential development is located near Great Hockham, a highly sought-after village in Norfolk. This location offers residents the opportunity to enjoy a quintessential English lifestyle from its country walks, culture, history and stunning noble buildings

- Brand new home
- Fully fitted kitchen
- Retirement property
- Over 45s
- Gated and secure community
- Pet-friendly
- Fully furnished
- Community living
- Part Exchange available

2x  2x 

**100% Market Value
Part Exchange with
Quickmove Properties**

Home exchange example:

Value of your existing home....£300,000

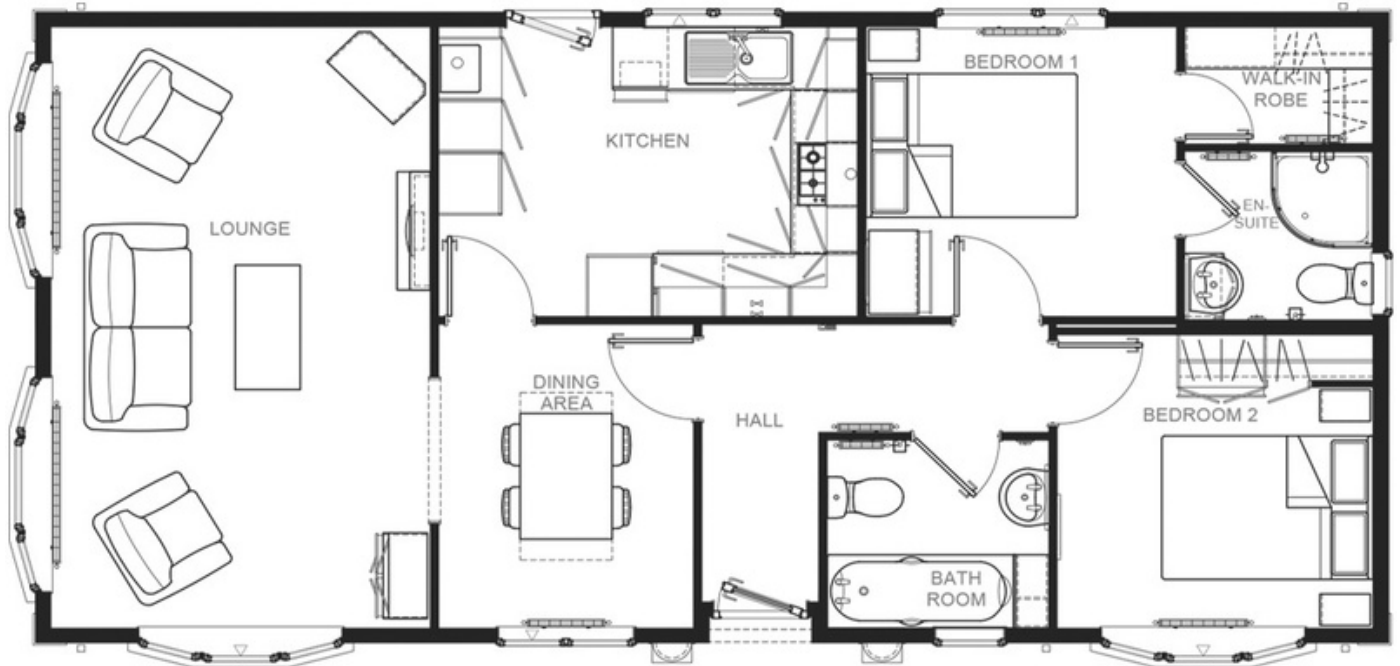
Price of new park home.....£225,000

Cash for you to enjoy.....£75,000



Please note: Stock images have been used, the home and furnishings may vary when it arrives on site.

Floor Plan



Middleton 40x20 2DB Cross Lounge

CONTACT DETAILS

0800 954 1288

sales@sellmygroup.co.uk

