



jordanfishwick

SALFORD
The Edge



The Edge, Salford M3 5NF

£925 Per calendar month



The Property

A MUST VIEW! - Please call the office to book a viewing!

Available Late June!! 11th floor apartment located in the prestigious Edge, Salford. Situated a stones throw from Deansgate and Spinningfields, this waterside development has a 24 hour concierge and high specification living throughout. The apartment is large and offers great open plan living and a large decked balcony. There is an entrance hallway with engineered wooden flooring throughout leading to large open plan kitchen and living area, with sliding patio door leading to the decked balcony which runs the full length of the apartment. There is a larger than average bedroom with fitted wardrobes and floor to ceiling windows. Stylish shower room

with walk in shower. Fully Furnished, integrated appliances and a SECURE PARKING SPACE INCLUDED! EPC rating C, Council Tax Band C

Directions



- Available Late June
- Large One Bedroom
- Furnished
- Secure Parking
- Concierge
- High Specification Throughout

Postcode - M3 5NF

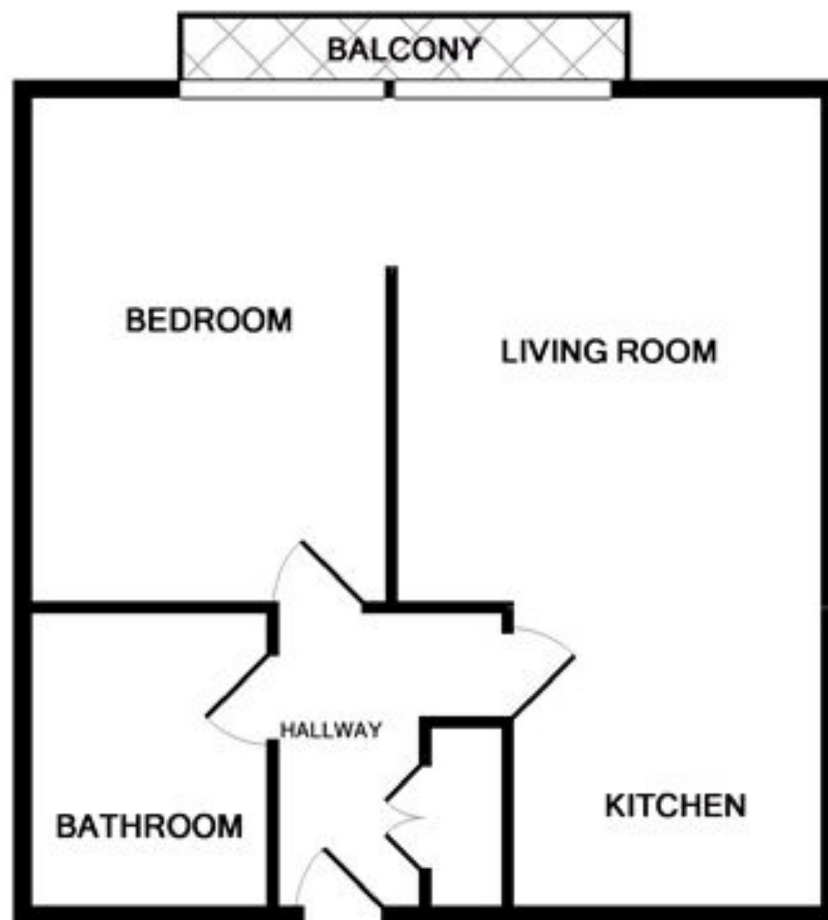
EPC Rating - B

Floor Area - sq ft

Local Authority - Salford council tax

Council Tax - Band C





Whilst every attempt has been made to ensure the accuracy of the floor plan contained here, measurements of doors, windows, rooms and any other items are approximate and no responsibility is taken for any error, omission, or mis-statement. This plan is for illustrative purposes only and should be used as such by any prospective purchaser. The services, systems and appliances shown have not been tested and no guarantee as to their operability or efficiency can be given

Made with Metropix ©2007