



Tiller Road, London

£4,250 pcm

HMO LICENSED HOUSE. ALL BILLS INCLUSIVE. LICENCES OF UP TO 3 MONTHS AVAILABLE.

Shared Reception, Kitchen and Garden

- Four Bedroom House
- Four Bathroom's
- Circa 1,592 Sq Ft
- Two Balconies & Two Terrace
- Excellent Location



Property Description

Bedroom 4

4.34m X 3.42m

Double, En-suite, Dressing Room, Balcony
3rd Floor

Bedroom 3

4.34m X 2.91M

Shared Bathroom w/Bedroom 2
Overspill usage of wet room shower ground floor
2nd Floor

Bedroom 2

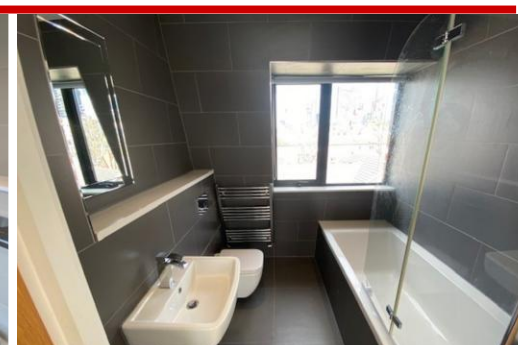
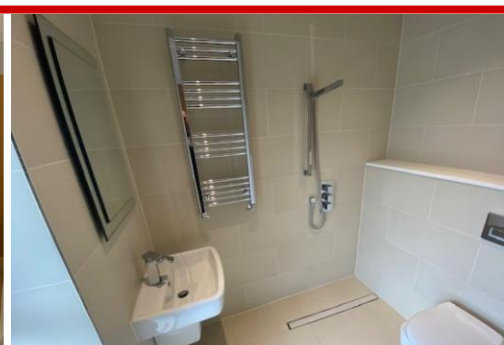
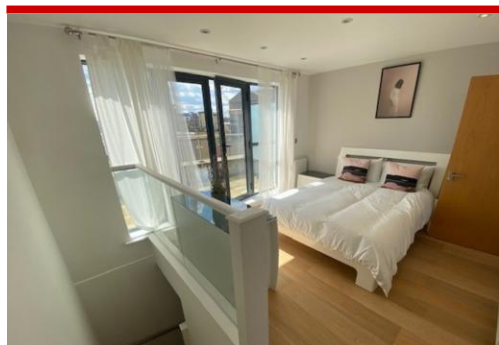
4.34m X 3.22M

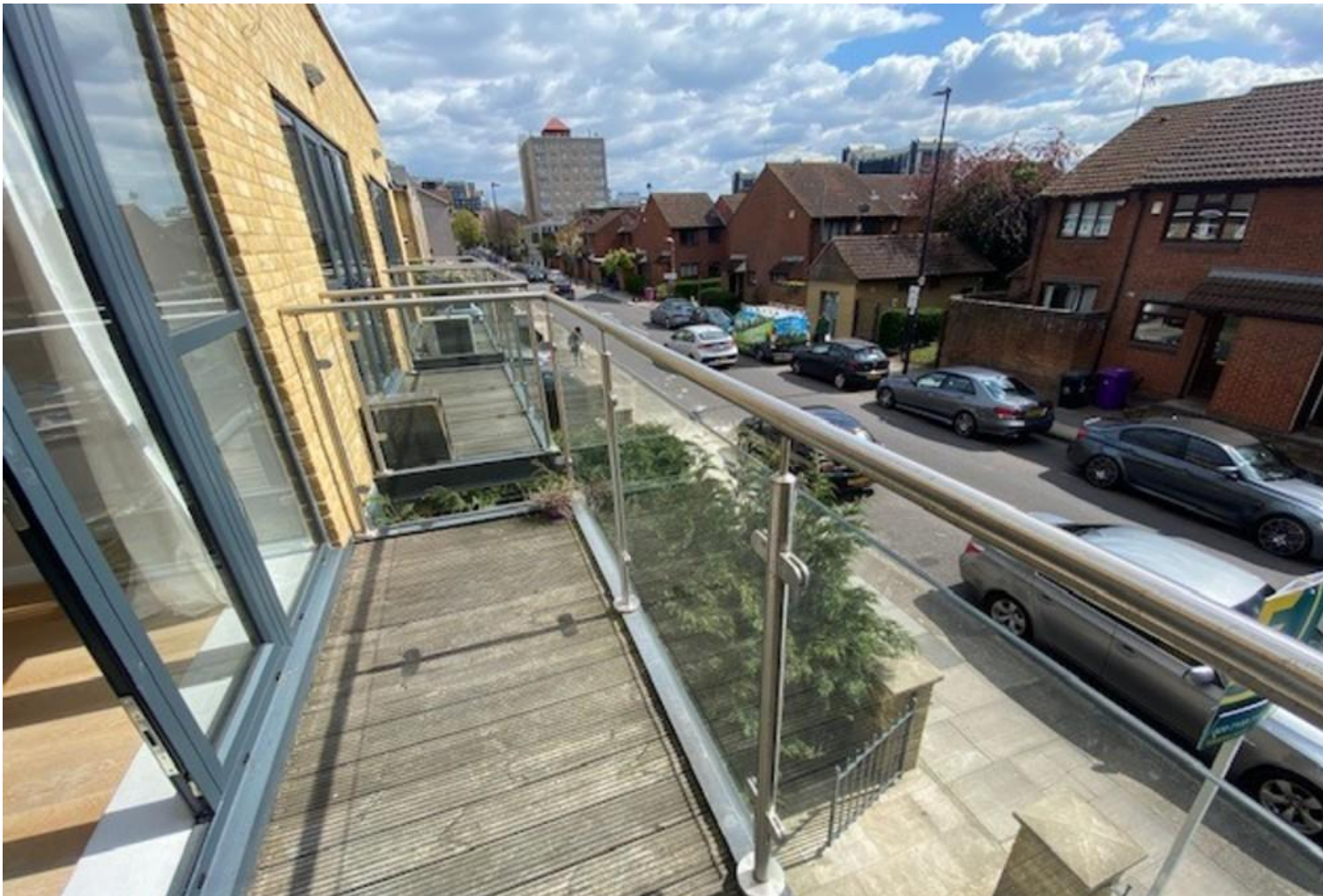
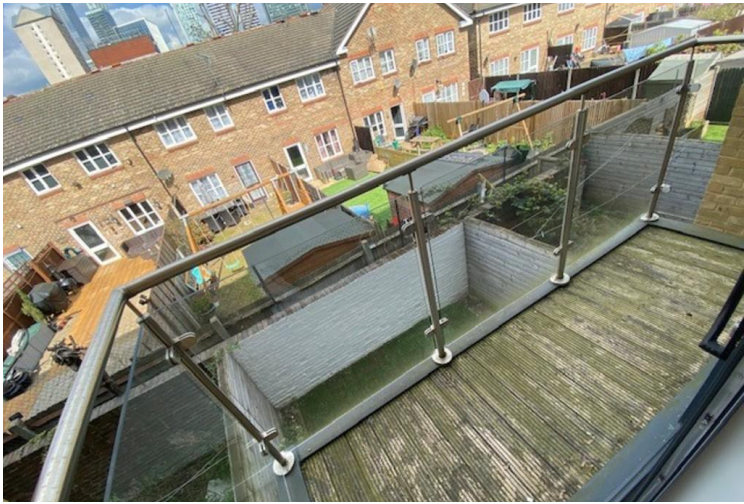
Shared Bathroom w/Bedroom 3
Overspill usage of wet room shower ground floor
2nd Floor

Bedroom 1

4.34m X 3.62m

En-Suite Private Bathroom
Balcony
1st Floor





Score	Energy rating	Current	Potential
92+	A		93 A
81-91	B	86 B	
69-80	C		
55-68	D		
39-54	E		
21-38	F		
1-20	G		

Ground Floor

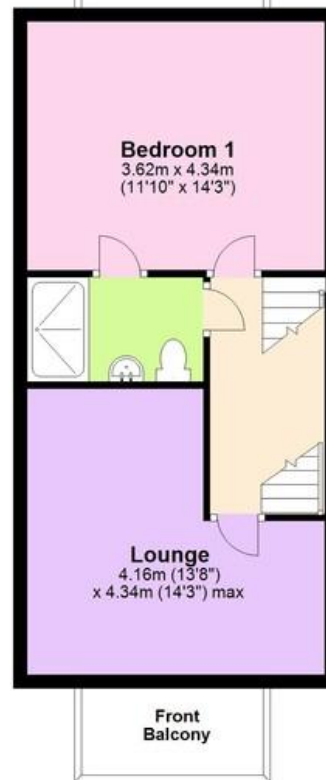
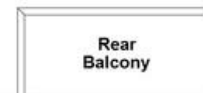
Approx. 41.3 sq. metres (444.1 sq. feet)



Second Floor

Approx. 39.3 sq. metres (422.7 sq. feet)

Total area: approx. 148.3 sq. metres (1595.8 sq. feet)



First Floor

Approx. 40.7 sq. metres (438.1 sq. feet)

Third Floor

Approx. 27.0 sq. metres (290.9 sq. feet)



655 Commercial Road, London, E14 7LW

Disclaimer

River Habitat, their clients and any joint agents give notice that: 1. They have no authority to make or give any representations or warranties in relation to the property. These particulars do not form any part of an offer or contract and must not be relied upon as statements or representations of fact. 2. Any areas, measurements or distances are approximate. The text, photographs and plans are for guidance only and are not necessarily a complete representation of the property. Photographs are taken using a wide angle lens camera. 3. It should not be assumed that the property has all necessary planning, building regulations or other consents and River Habitat have not tested any services, equipment or other facilities. Purchasers must satisfy themselves by inspection or otherwise