



## **37 WORDSWORTH DRIVE, EASTBOURNE**

### **TO LET £725 PCM UNFURNISHED**

**Accommodation:** First Floor Flat, Bedroom, Open Plan Lounge/ Kitchen Diner, Bathroom, Front Garden, Double Glazed Windows, Gas Central Heating, Allocated Parking Space.

If you're looking for a flat but don't like large blocks, this pleasant first floor home may prove to be the ideal property. Situated on Eastbourne's outskirts in the popular residential Poets area of Langney, with access to local bus routes in Wordsworth Drive and shopping facilities at Langney shopping centre within 1 mile. The flat also benefits from a modern fitted bathroom and open plan lounge / kitchen diner. Plus, front garden and allocated parking. Arrange a viewing at your earliest opportunity and call The Exchange Letting & Management today on 01323 489560.

## FIRST FLOOR

---

Communal entrance, storage cupboard, staircase to first floor, door to:

### Hall

Loft access:

### Lounge with open plan kitchen

6.38m (20'11") reducing to 3.88m (12'8") x 2.94m (9'7")

Double glazed bay window to rear, double glazed window to side, coved ceiling, radiators:



### Kitchen Area

Fitted with a matching range of base and eye level units with worktop space over, stainless steel sink with single drainer, double glazed window to front, part tiling to walls, wall mounted gas boiler, fitted electric oven with inset gas hob, cooker point, plumbed for washing machine:



### Bedroom

2.90m (9'6") x 2.36m (7'8")

Double glazed window to rear, radiator:



### Bathroom

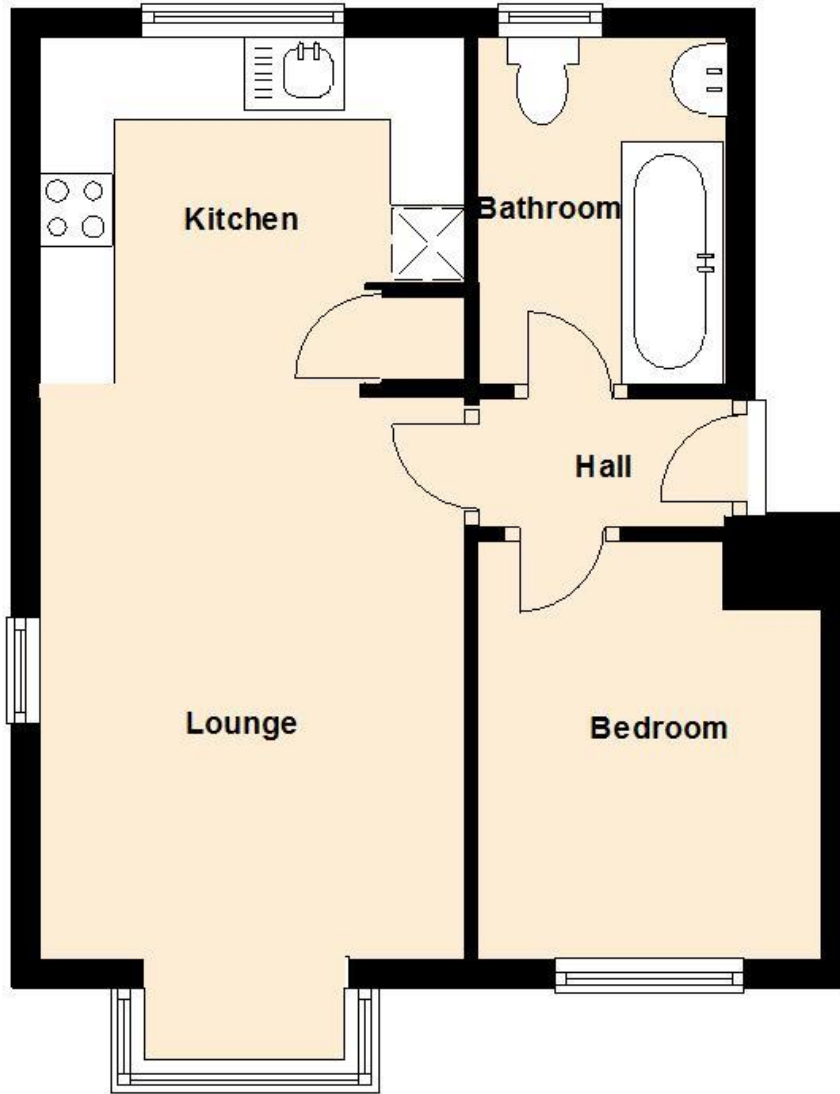
Double glazed window to front, fitted with panelled bath and wall mounted shower and shower screen, pedestal wash hand basin, low-level WC, radiator, part tiled walls:




### Outside

Front Garden, lawn, allocated parking space:

# First Floor



## Energy Efficiency Rating

	Current	Potential
<i>Very energy efficient - lower running costs</i>		
(92 - 100) <b>A</b>		
(81 - 91) <b>B</b>		
(69 - 80) <b>C</b>	78	82
(55 - 68) <b>D</b>		
(39 - 54) <b>E</b>		
(21 - 38) <b>F</b>		
(1 - 20) <b>G</b>		
<i>Not energy efficient - higher running costs</i>		
<b>England &amp; Wales</b>	EU Directive 2002/91/EC 	

**IMPORTANT INFORMATION:** We have tried to make sure that these particulars are accurate but, to a large extent, we have to rely on what the seller tells us about the property. Once you find the property you want to buy, you will need to carry out more investigations into the property than it is practical or reasonable for an Estate Agent to do when preparing sales particulars. For example, we have not carried out any kind of survey of the property to look for structural defects and would advise any homebuyer to obtain a surveyor's report before exchanging contracts. If you do not have your own surveyor, we would be happy to recommend one. We have not checked whether any equipment in the property (such as central heating) is in working order and would advise homebuyers to check this. You should also instruct a solicitor or licensed conveyancer to investigate all legal matters relating to the property (e.g. title, planning permission, etc) as these are specialist matters in which estate agents are not qualified. Your solicitor or conveyancer will also agree with the seller what items (e.g. carpets, curtains, etc) will be included in the sale. If you do not have a solicitor or conveyance we would be happy to recommend one.

**ADDITIONAL SERVICES:** (VISIT OUR WEBSITE FOR MORE INFORMATION) :

#### **THE EXCHANGE PROPERTY SERVICES:**

Thinking of selling? The Exchange Property Services offers huge savings on traditional Estate Agency fees with our popular fixed fees from just £360 inclusive of VAT or a traditional commission option payable on completion based on just 0.6% inclusive of VAT with a no sale, no fee guarantee. Make your property stand out at no extra cost; we use virtual tours, detailed floor plans, eye catching for sale boards, video tours and social media to market your home. We don't believe in restrictive agency agreements so all of our agency agreements are on a multiple agency basis.

#### **THE EXCHANGE LETTING & MANAGEMENT:**

We offer a wide range of services for new or experienced landlords looking to let their property, including Let Only, Rent Collection or Full Management to suit your individual needs. Utilising our unrivalled marketing which includes virtual tours, detailed floor plans, eye catching for sale boards, video tours and social media to help let your property quickly combined with competitive fees & discounts available for portfolios.

#### **THE EXCHANGE MORTGAGE SERVICES:**

If you require a mortgage to purchase your new home, a buy to let investment, want more information on the government "Help to Buy Scheme" or if you decide not to move and are considering re-mortgaging, "The Exchange Mortgage Services" can assist you with professional mortgage advice offering advice and recommendation regarding a comprehensive range of mortgages from across the market.

*Your home may be repossessed if you do not keep up repayments on your mortgage. There will be a fee for this advice. The exact amount will depend on your circumstances but we estimate it will be £250 or 0.5% payable upon completion of your mortgage.*

#### **PERCY WYNDHAM COUNTRY & EXCLUSIVE HOMES:**

If you're looking to sell or let a Country or Exclusive Home, our "Percy Wyndham" brand specialises in selling or letting properties which require that extra attention to detail to present your property in the manner it deserves using virtual tours, detailed floor plans, eye catching for sale boards, video tours, social media to market your home combined with competitive agency fees and agreements.

#### **FOLLOW THE EXCHANGE ON SOCIAL MEDIA:**



Like 'The Exchange Property Services' on Facebook



Follow 'The Exchange Property Services' on Instagram



Follow 'The Exchange Property Services' on Twitter



Subscribe to 'The Exchange' to watch our video tours

The Exchange

Property Services  
Mortgage Services  
Letting & Management Services

[www.theexchangeonline.co.uk](http://www.theexchangeonline.co.uk)

Tel: 01323 489560

Email: [info@exchangegrouponline.co.uk](mailto:info@exchangegrouponline.co.uk)