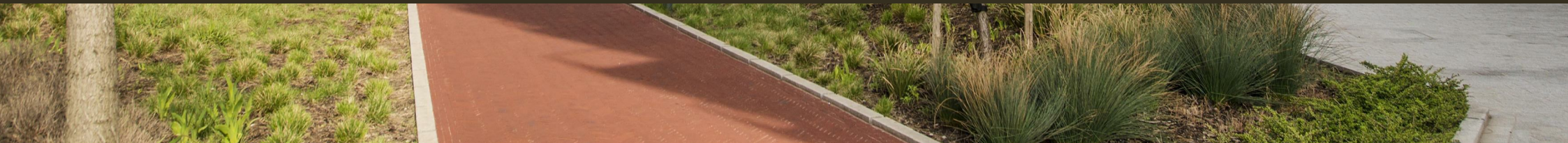




Grantham House, Canning Town  
London E14

GARTONJONES.COM



# Grantham House, Canning Town London, E14

GARTON JONES.COM

49 Marsham Street Lettings:  
London +44 (0) 20 7340 0480  
SW1P 3DP westminster@gartonjones.com  
www.gartonjones.com

## £550 Per Week

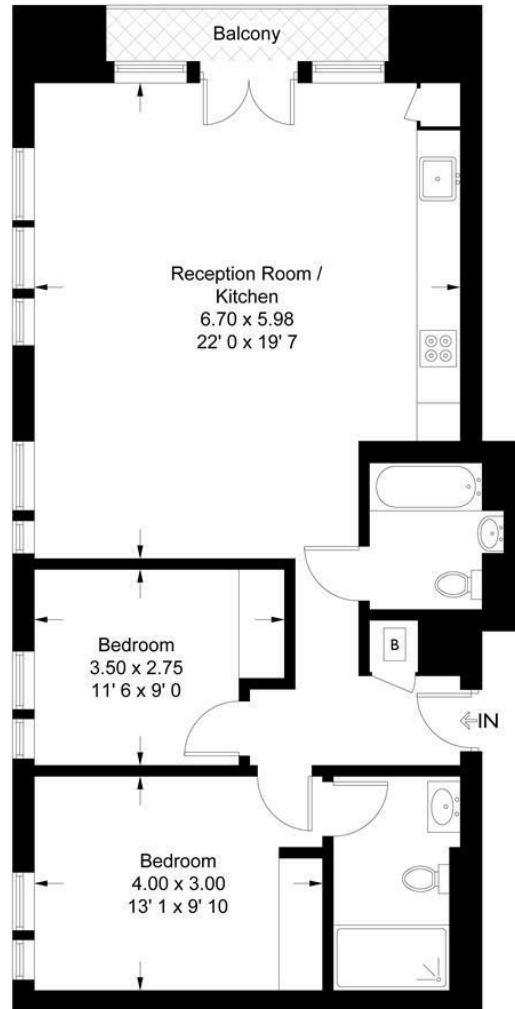
A 2 double bedroom apartment to rent on the 13th floor (with lift) of Grantham House at Ballymore's popular London City Island development. The accommodation offers an open plan reception room with an integrated kitchen, 2 luxury bathrooms (1 en-suite) and a balcony. City Island is a new neighbourhood on the Leamouth Peninsula by Canary Wharf. The landscaped site is home to the English National Ballet, surrounded by water and connected by a specially commissioned bridge to the transport links of Canning Town. The Island's residents are members of the exclusive City Island Arts Club and membership allows access to a range of elegantly designed private facilities including a clubhouse, 24 hour concierge, gymnasium, spa & treatment rooms, a cinema screening room and swimming pool. There will be many on site shops and restaurants and you will be well connected to other local transport links including the DLR.

- 2 Double Bedroom Apartment
- 17th Floor (Lift)
- Open Plan Reception Room
- Smart Integrated Kitchen
- 2 Bathroom (1 En-Suite)
- Balcony
- 24 Hour Concierge
- Residents Leisure Suite with Gym, Indoor Swimming Pool & Spa Facilities
- Close to Local Amenities Including Shops, Restaurants & Transport Links
- Walking Distance to Canning Town Station



### Grantham House

Approximate Gross Internal Area = 825 sq ft / 76.6 sq m



This plan is not to scale and must be used as layout guidance only. All measurements and areas are approximate and should not be relied upon to provide accurate information. This plan must not be relied upon when making property valuations, design considerations or any other such relevant decisions. We accept no responsibility or liability (whether in contract, tort or otherwise) in relation to any loss whatsoever arising from or in connection with any use of this plan or the adequacy, accuracy or completeness of it or any information within it.

GARTON JONES.COM

