



Vulcan Mill, Malta Street, Manchester

£975 PCM

Previously a working factory during Manchester's Cottonopolis era, Vulcan Mill is a highly desirable development packed with gorgeous features and this two bedroom apartment is an absolute stunner.

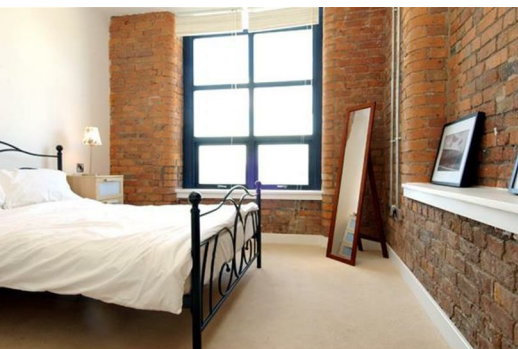
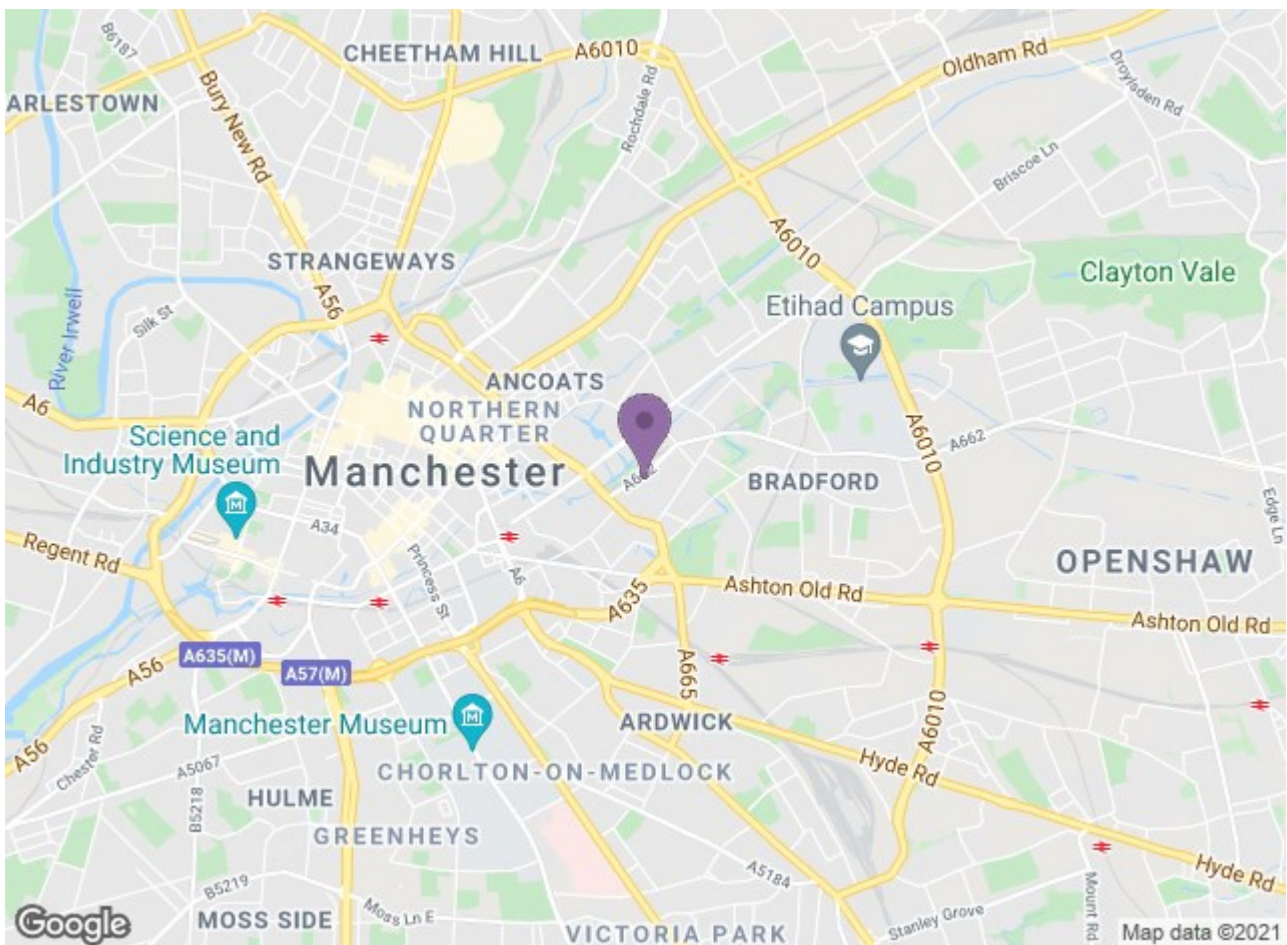
Having undergone complete refurbishment and kitted out with fantastic interior fittings, this apartment blends a lovely modern style without losing its original character and charm. Features include exposed brickwork, metal poles and giant mill-sized windows - not to mention a spacious open-plan kitchen/lounge, two bedrooms and two bathrooms.

Vulcan Mill overlooks a huge stretch of greenland which is bustling in the summer, and is close to many of New Islington's newly-built amenities. There is a Metrolink tram stop nearby to take you into the heart of the city, and the Etihad stadium is just a short walk in the opposite direction.

If you're interested in having a closer look, or have any questions, do get in touch. And just so you know, the pictures for this apartment are for marketing purposes only, so the internal fixtures, fittings and furnishings may vary.

Available 16th July 2021





Energy Efficiency Rating		Environmental Impact (CO ₂) Rating	
Rating	Score	Rating	Score
A	81	A	70
B	76	B	70
C		C	
D		D	
E		E	
F		F	
G		G	