



7



sparks ellison



# 7 Trevose Close, Chandlers Ford, SO53 3EB

## £925 Per Calendar Month

A two bedroom detached bungalow situated in a popular cul-de-sac location towards the Southern end of Chandlers Ford. The property comprises sitting room, kitchen, two bedrooms and a shower room. Externally the property enjoys a 66' x 35' rear garden. Trevose Close is conveniently situated for access to the centre of Chandlers Ford along with access to the M3 and M27 motorways and Eastleigh town centre.

### ACCOMMODATION

#### Ground Floor

#### Entrance Hall:

Built in airing cupboard.

#### Sitting Room:

15'0" x 11'11" (4.57 x 3.63)

#### Kitchen:

10'5" x 7'10" (3.18 x 2.39)

Wall mounted boiler, washer dryer, fridge/freezer, electric cooker.

#### Bedroom 1:

11'11" x 11'7" (3.63 x 3.53)

#### Bedroom 2:

11'5" x 10'5" (3.48 x 3.18)

#### Shower Room:

6'4" x 5'4" (1.93 x 1.63)

Comprising shower in cubicle, wash hand basin, wc.

### OUTSIDE

#### Front:

The front garden has an area laid to lawn, area laid to paved slabs, planted bed, driveway providing off road parking leading along side the property where there is an outside tap and gate providing access to the rear garden.

#### Rear Garden:

Measures approximately 66' x 35' and comprises a paved patio area, concrete patio area, area laid to lawn, variety of mature plants, shrubs and trees, garden shed.

### OTHER INFORMATION

#### Tenure:

Freehold

#### Approximate Age:

1950's

#### Approximate Area:

69sqm/743sqft (Details taken from EPC)

#### Heating:

Gas central heating

#### Windows:

Double glazed

#### Management:

Tenant find only

#### Availability:

23rd June 2021

#### Infant / Junior School:

Fryern Infant School / Merdon Junior School

#### Secondary School:

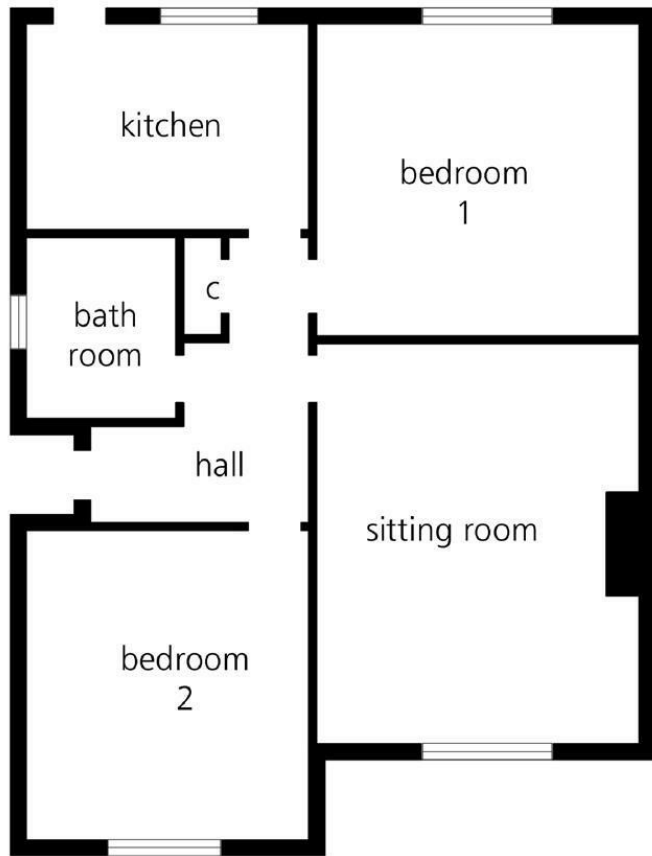
Toynbee Secondary School

#### Local Council:

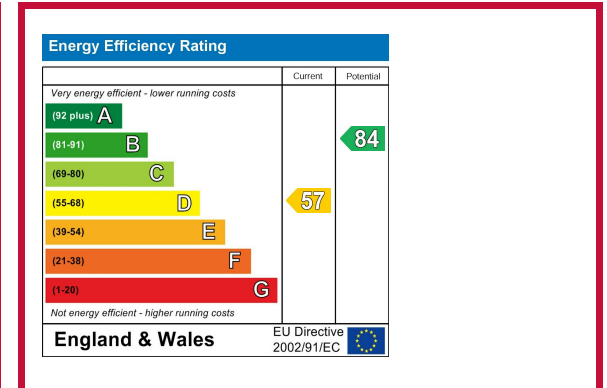
Eastleigh Borough Council 02380 688000

#### Council Tax:

Band D - £1,818.58 21/22



illustrative purposes only



94 Winchester Road, Chandlers Ford, Eastleigh, Hampshire SO53 2GJ  
 Sales: t: 02380 255333 e: [property@sparksellison.co.uk](mailto:property@sparksellison.co.uk)  
 Lettings: t: 02380 018518 e: [lettings@sparksellison.co.uk](mailto:lettings@sparksellison.co.uk)



While we endeavour to make our sales particulars fair, accurate and reliable, they are only a general guide to the property and, accordingly, if there is any point which is of particular importance to you please contact the office and we will be pleased to check it for you, especially if you are contemplating travelling some distance to view the property. These approximate room sizes are only intended as general guidance. You must verify the dimensions carefully before ordering carpets or any built in furniture. Please note we have not tested the services or any of the equipment or appliances in this property, accordingly we strongly advise prospective buyers to commission their own survey or service report before finalising their offer to purchase. These particulars are issued in good faith but do not constitute representations of fact or form part of any offer or contract. The matters referred to in these particulars should be independently verified by prospective buyers or tenants. Neither Sparks Ellison nor any of its employees or agents has any authority to make or give any representation or warranty whatever in relation to this property. Your home is at risk if you do not keep up repayments on a mortgage or other loan secured on it. Written quotations available on request. All loans secured on property. Life assurance usually required.



