

# Persimmon Gardens

Cheltenham GL51 0UF



## 34 Persimmon Gardens, Cheltenham, GL51 0UF

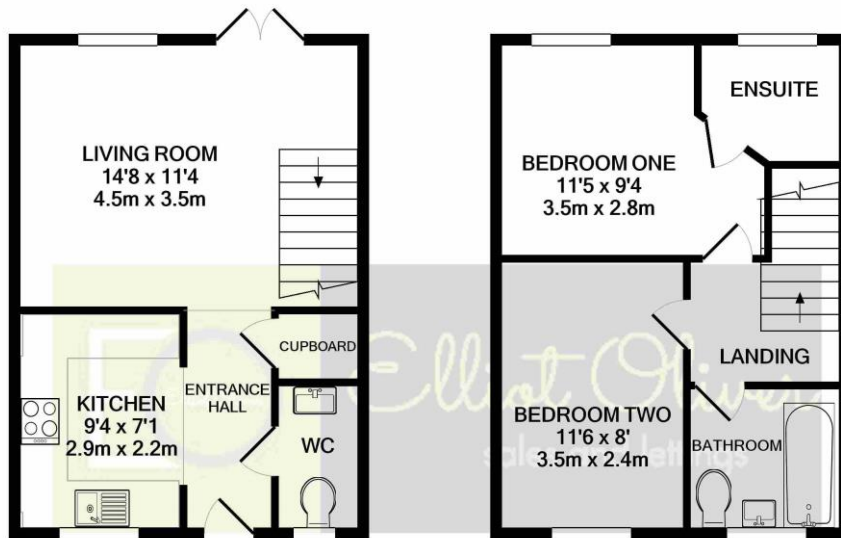
This modern mid terraced two bedroom house is located on the out skirts of Cheltenham.

This beautiful starter home offers great transport links to Cheltenham Town Centre, Gloucester, Tewkesbury and M5 North. Property comprises of:- Entrance hall with a useful WC just off, kitchen. the living room / diner is at the back of the property with French doors leading into the garden. Upstairs leads to the main bedroom which offers an en suite shower room, a further bedroom and family bathroom. Further benefits includes, double glazing, gas fired central heating, parking, front and good size rear garden.









GROUND FLOOR  
APPROX. FLOOR  
AREA 303 SQ.FT.  
(28.1 SQ.M.)

1ST FLOOR  
APPROX. FLOOR  
AREA 303 SQ.FT.  
(28.1 SQ.M.)

TOTAL APPROX. FLOOR AREA 606 SQ.FT. (56.3 SQ.M.)

Whilst every attempt has been made to ensure the accuracy of the floor plan contained here, measurements of doors, windows, rooms and any other items are approximate and no responsibility is taken for any error, omission, or mis-statement. This plan is for illustrative purposes only and should be used as such by any prospective purchaser. The services, systems and appliances shown have not been tested and no guarantee as to their operability or efficiency can be given

Made with Metropix ©2021

**Agents Note:** Whilst every care has been taken to prepare these sales particulars, they are for guidance purposes only. All measurements are approximate and for general guidance purposes only and whilst every care has been taken to ensure their accuracy, they should not be relied upon and potential buyers are advised to recheck the measurements



**OFFICE**

101 Promenade,  
Cheltenham,  
Gloucestershire, GL50  
1NW  
info@elliottoliver.co.uk