



Quick Road, London, W4 2BU

Guide Price £1,500,000

WHITMAN & CO.

SALES · LETTINGS · COMMERCIAL

- Four bedroom Victorian cottage
- 40' South facing garden
- 19' bespoke kitchen/breakfast room
- Located in the popular Glebe Estate
- Four bed/three bathrooms
- Garden studio/office

Tenure - Freehold
 Local Authority - Hounslow
 Council Tax - Band F

THE PROPERTY

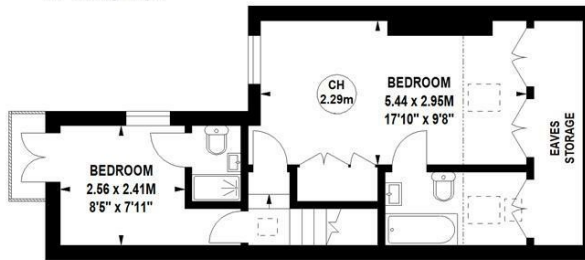
An immaculately presented four bedroom Victorian cottage, ideally located in the ever popular Glebe Estate with the added benefit of a 40' south-facing garden and close proximity to all amenities. Accommodation comprises four bedrooms, luxury bathroom, two additional en suites, 24' through reception room, 19' bespoke kitchen/breakfast room, large cloakroom, private 40' south facing landscaped garden, garden studio/office. Situated within close proximity of Turnham Green tube station and the extensive bars, shops and restaurants on Chiswick High Road.

Quick Road, W4

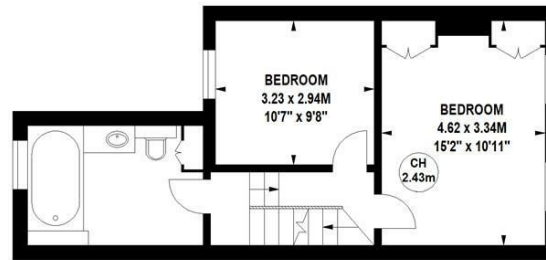
Approximate gross internal area
138.42 sq m / 1490 sq ft
 (Including Eaves Storage & Excluding Office)
 Eaves Storage
 4.65 sq m / 50 sq ft
 Office
 10.03 sq m / 108 sq ft



Key :
 CH - Ceiling Height



Second Floor



First Floor



Ground Floor

Not to scale, for guidance only and must not be relied upon as a statement of fact.
 All measurements and areas are approximate only

SITUATION



5-7 Turnham Green Terrace, Chiswick, London, W4 1RG
 Tel 020 8747 8300

E-mail sales@whitmanandco.com
 Website www.whitmanandco.com