



**Bridgeview  
House**

WORCESTER

**Offers Over  
£150,000**





# 1 Bedroom Mid Floor Apartment

## Features.

- MID FLOOR APARTMENT
- OPEN PLAN LIVING SPACE
- BEDROOM AND BATHROOM
- BALCONY
- ALLOCATED PARKING
- POPULAR DIGLIS LOCATION
- LIFT
- SERVICE CHARGE £99.50 PCM (APPROX)
- GROUND RENT £20 PCM (APPROX)
- 114 YEARS LEFT ON LEASE

## Description.

**Summary:** A light and spacious one bedroom apartment located on the Diglis Basin. The property is immaculate throughout and finished to a high specification. Close to beautiful river walks, gym, beauticians, café and bars. With private balcony, secured parking space and one additional visitors parking permit. There are communal gardens for all residents to enjoy which are alongside the River Severn. Viewing is recommended.

**Description:** The property briefly comprises; communal entrance with lift and stairs to apartment. Private entrance hall with storage. Open plan living space with built in kitchen which was upgraded by the owner when purchased and has integrated appliances to include dishwasher, washer/dryer, double oven and fridge freezer. Dining space and lounge area which have French doors onto balcony which is perfect for alfresco dining. Large double bedroom with fitted wardrobe and separate bathroom. The property benefits from heating, double glazing, and the added benefit of included blinds throughout the apartment. Secure parking in private gated entrance.



**Outside:** Private balcony and allocated parking.

**Location:** Situated in the popular Diglis area of Worcester it benefits from having playing fields, gym, a hotel, and pub. This is an attractive location due to its close proximity to the City Centre which offers wine bars, restaurants and shopping. Foregate Street Station is in the City if you need to commute and you are also perfectly positioned for canal and river walks.

**Rooms:**

Hall

Kitchen/Diner/Lounge:

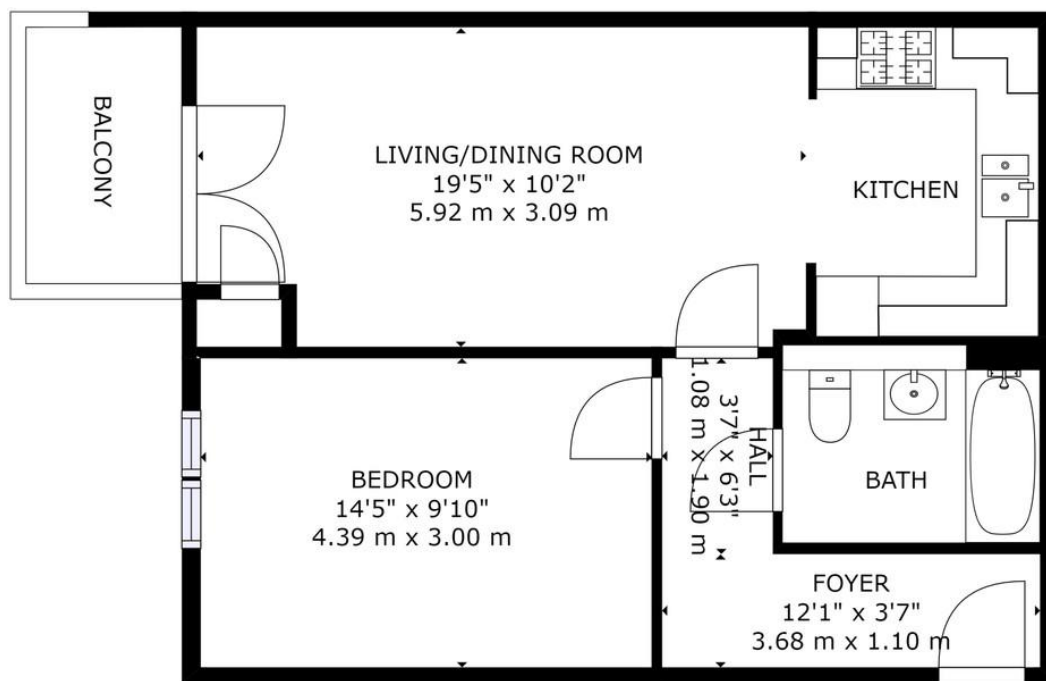
Balcony:

Master Bedroom:

Bathroom:







FLOOR 1

GROSS INTERNAL AREA  
FLOOR 1: 548 sq. ft, 51 m<sup>2</sup>  
TOTAL: 548 sq. ft, 51 m<sup>2</sup>  
SIZES AND DIMENSIONS ARE APPROXIMATE, ACTUAL MAY VARY.



EPC: B

COUNCIL TAX BAND: C

TENURE: Leasehold

Lease Length 114 Years Left Approx.

Service Charge £1195 PA Approx.

Ground Rent £252 PA Approx.

For more information on this house or to arrange a viewing please call the Worcester office on:

01905 958290

Alternatively, you can scan below to view all of the details of this property online.



**Please read the following:** These particulars are for general guidance only and are based on information supplied and approved by the seller. Complete accuracy cannot be guaranteed and may be subject to errors and/or omissions. They do not constitute a contract or part of a contract in any way. We are not surveyors or conveyancing experts therefore we cannot and do not comment on the condition, issues relating to title or other legal issues that may affect this property. Interested parties should employ their own professionals to make enquiries before carrying out any transactional decisions. Photographs are provided for illustrative purposes only and the items shown in these are not necessarily included in the sale, unless specifically stated. The mention of any fixtures, fittings and/or appliances does not imply that they are in full efficient working order and they have not been tested. All dimensions are approximate. We are not liable for any loss arising from the use of these details.

15 Foregate Street  
Worcester  
Worcestershire  
WR1 1DB