

**For Rent**



## People Make Places



**Berwick Street, Soho W1**

Studio | 344 sq ft

£495 pw





This large, modern, studio flat has an open plan reception room with a fully fitted kitchen. The large windows allow for plenty of light and is ideal for entertaining. There is a modern bathroom and also benefits from amazing wooden floors and secondary glazing.

#### What you need to know

- Studio apartment
- One bathroom
- Third Floor
- Wooden flooring throughout
- Secondary glazing
- Unfurnished
- Lots of natural light
- Moments from Kingly court
- Short walk to Tottenham Court Road and Oxford Circus stations
- Available late December / early January





### Overview

This exquisite studio has large windows which flood the room with lots of natural light. There are high ceilings and wide plank hard wood floor, secondary glazing, a bathroom with shower over and a fully equipped kitchen, neatly tucked into the corner of the room.

Nestled in the heart of the vibrant Berwick Street, this residence offers a haven for urban dwellers seeking refined living in the midst of Central London's bustling energy.

Available late December on an unfurnished basis for a 3 year contract with a 6 months mutual break clause (subject to contract and satisfactory references). Westminster Council tax band D

WHAT WE LOVE Moments from Carnaby Street

Close to Berwick Street market

Short walk to the shops of Regent Street

Wood floors

Amazing restaurants close by



**Berwick Street, Soho W1**

# People Make Places

London is collection of inspiring urban villages and one of the most exciting places in the world to live, work & play.

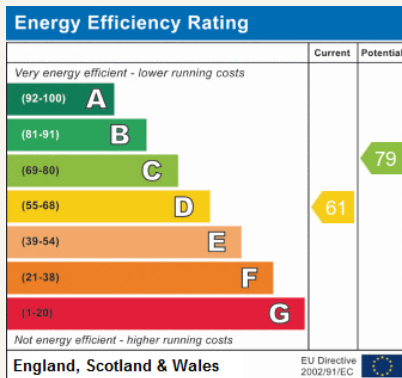
We work with both property owners and their occupiers, sharing the story of these vibrant neighbourhoods, conveying the unique soul & energy to future custodians, the people who'll keep them buzzing.

And unlike many real estate businesses we're not just about buildings, because streets & buildings don't make a neighbourhood.

We're about building relationships, because **people make places**.

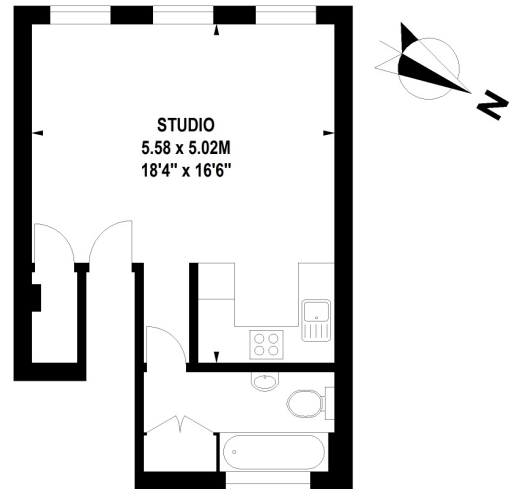
MISINTERPRETATION ACT (COPYRIGHT) DISCLAIMER: Tavistock Bow Ltd for themselves and for the vendor(s) of this property whose agents they are, given notice that: 1. These particulars do not constitute, nor constitute any part of, an offer or contract. 2. None of the statements contained in these particulars as to the property are to be relied on as statements or representations of fact. 3. Any intending purchaser or lessee must satisfy themselves by inspection or otherwise as to the correctness of each of the statements contained in these particulars. 4. The vendor(s) or lessor(s) do not make or give and neither Tavistock Bow Ltd nor any person in their employment has any authority to make or give any representation or warranty whatever in relation to this property. Finance Act 1989, Unless otherwise stated all prices and rents are quote exclusive of VAT. Property Misrepresentation Act 1991; These details are believed to be correct at the time of compilation but may be subject to subsequent amendment.

Follow us:     @tavistockbow



## Berwick Street, W1

Approximate Gross Internal Area 32 sq m / 344 sq ft



### Third Floor

Floor Plan produced for Tavistock Bow by Mays Floorplans © . Tel 020 3397 4594  
Illustration for identification purposes only, not to scale  
All measurements are maximum, and include wardrobes and window bays where applicable

**tavistockbow**

21 New Row, Covent Garden,  
London, WC2N 4LE

t: 020 7477 2177  
e: hello@tavistockbow.com  
w: tavistockbow.com



**Berwick Street, Soho W1**