

OPENING DOORS SINCE 1843

Loveitts^{est. 1843}
THE ESTATE AGENTS



69 Dovedale Avenue
Coventry, CV6 7AP

£725 PCM

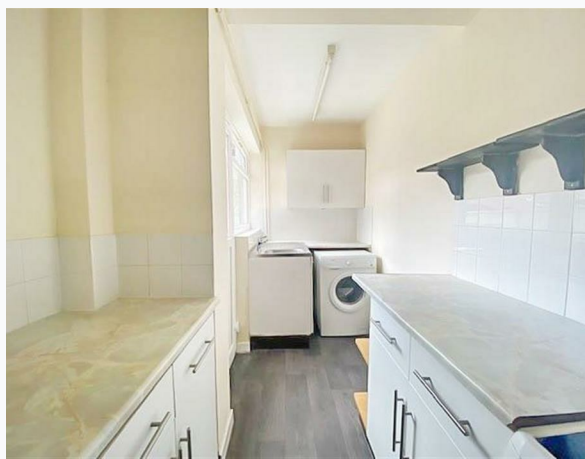


69 Dovedale Avenue

Coventry, CV6 7AP

This is a three bedroom mid terrace house situated in Longford, Coventry. In brief the property comprises of; entrance hallway, lounge, a fitted kitchen and a dining room. To the first floor there are two double bedrooms and one single bedroom. To the rear end of the property is a garden. The property benefits are from being double glazed and having central heating throughout.

**** AVAILABLE JUNE- DEPOSIT £835 ****






- Terraced Property
- Longford
- Unfurnished Property
- Sorry, No Pets Allowed
- Rear Garden
- 3 Bedrooms
- 2 Double Bedrooms
- 1 Bathroom

Floor Plan

Area Map



Energy Efficiency Rating

	Current	Potential
Very energy efficient - lower running costs		
(92 plus) A		
(81-91) B		
(69-80) C		
(55-68) D	63	68
(39-54) E		
(21-38) F		
(1-20) G		
Not energy efficient - higher running costs		
England & Wales	EU Directive 2002/91/EC 	

These particulars, whilst believed to be accurate are set out as a general outline only for guidance and do not constitute any part of an offer or contract. Intending purchasers should not rely on them as statements of representation of fact, but must satisfy themselves by inspection or otherwise as to their accuracy. No person in this firm's employment has the authority to make or give any representation or warranty in respect of the property.