



Brock Way,  
Wentworth Estate, Surrey



Occupying a quiet location within the Wentworth Estate, this beautiful family home offers a modern layout and a manicured south-facing garden with a swimming pool.

## 15 Brock Way, Wentworth Estate, Virginia Water, Surrey GU25 4SD

- ◆ Modern Wentworth home with stunning garden and heated swimming pool
  - ◆ Six-bedroom home on one the area's most sought after roads
  - ◆ Good size plot with south facing garden and patio areas surrounding the pool
  - ◆ Formal reception room with high ceilings and feature fireplace
    - ◆ Additional formal dining room, study, and family room
  - ◆ Master bedroom with large dressing room and luxury en-suite
    - ◆ Underfloor heating and luxury fittings throughout
    - ◆ Spacious driveway with electric gates and double integrated garage
- ◆ Smart home audio & visual technology



### Situation

This luxurious property is located within a highly sought after private road on the prestigious Wentworth Estate - an exclusive location with barrier security, a tranquil atmosphere and access to world-class sporting facilities.

Situated in the heart of Virginia Water, in a highly convenient location just a short walk from the shopping parades of Virginia Water Village with its excellent range of day-to-day shops, restaurants and mainline railway station with a fast service of trains to London Waterloo in approximately 42 minutes.



## Additional Information

**Postcode:** GU25 4SD

**Tenure:** Freehold

**Council Tax Band:** H

**Local Authority:** Runnymede Borough Council

**Service Charge:** Annual Wentworth Road Charges Apply

**Services:** The property has mains electricity, gas, water, and drainage services.

**Fixtures and Fittings:** All Carpets, curtains, and light fittings are available by separate negotiation.

**Viewing: Strictly by appointment with**

**Barton Wyatt:**

homes@bartonwyatt.co.uk

01344 843000

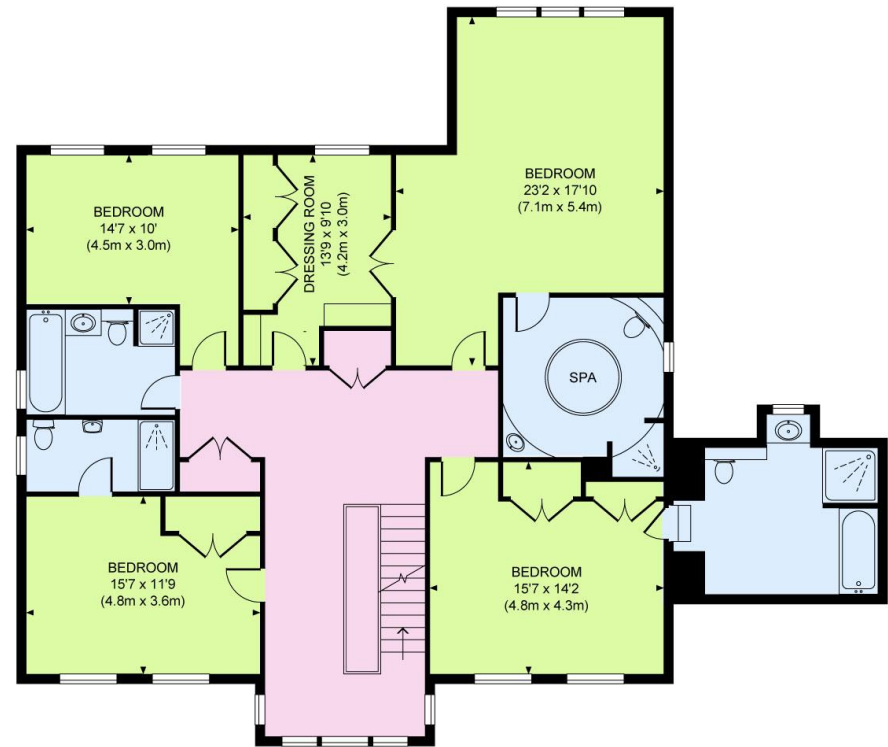
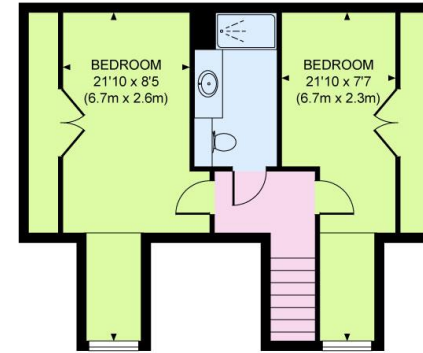
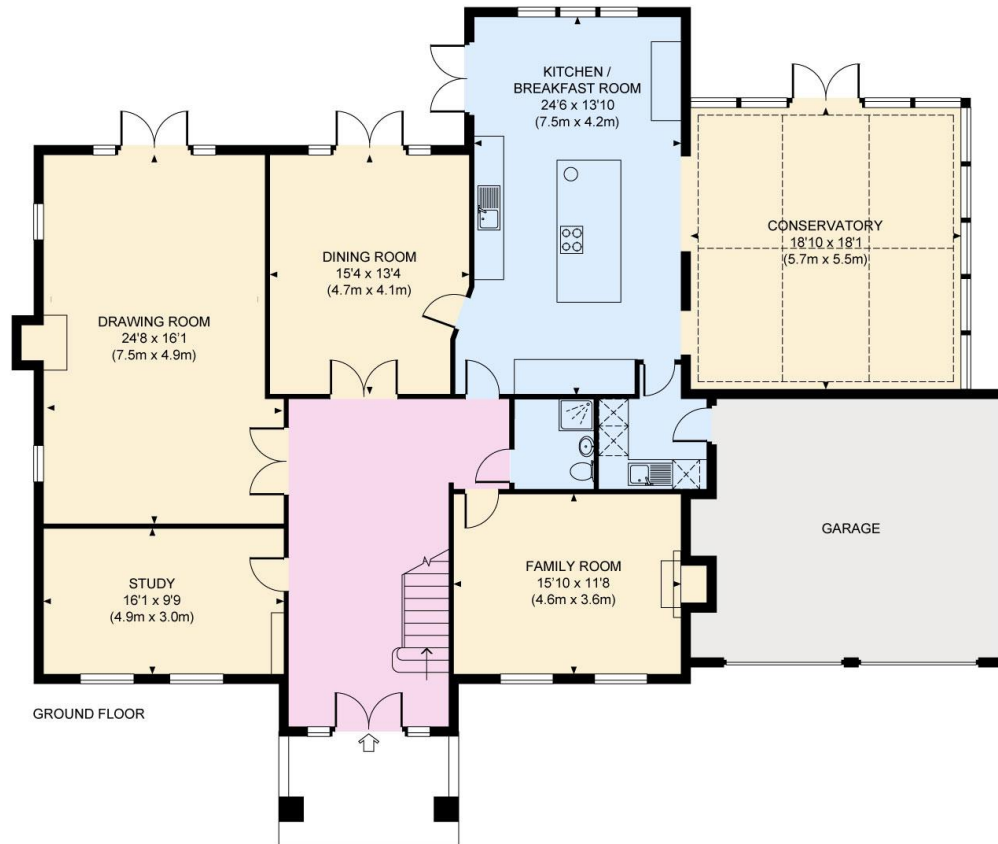
**Energy Performance: C74**

A copy of the full Energy Performance Certificate is available upon request.





Approximate Gross Internal Area  
4792 sq ft / 445.2 sq m





# BARTON · WYATT

The Estate Office, 2 Station Approach, Virginia Water, Surrey, GU25 4DL

01344 843000

[homes@bartonwyatt.co.uk](mailto:homes@bartonwyatt.co.uk)

[bartonwyatt.co.uk](http://bartonwyatt.co.uk)