



**SALES**

**LETTINGS**

**MANAGEMENT**

[chiswick@tatepartnership.co.uk](mailto:chiswick@tatepartnership.co.uk)

**020 8996 0000**

**TATEPARTNERSHIP.CO.UK**



**Ennismore Avenue, W4**

**£525,000**

Situated in ever popular Ennismore Avenue, this bright 2bedroom first floor flat, with a feature of the accommodation being high ceilings and oversized Edwardian windows, letting in so much light to all the main rooms. First floor apartments are preferred by many and this one runs to 600sq/ft, with separate hall, living room, kitchen, bathroom and two bedrooms. It also comes with the reassuring "share of freehold" that most buyers of today, appreciate so much. The location is great too, just off Chiswick High Road, only minutes from Chiswick town centre, with its vibrant, family-friendly shopping and dining amenities. 5 minutes walk to Turnham Green or Stamford Brook stations.

### Ennismore Avenue, W4

Approximate Gross Internal Area = 55.2 sq m / 594 sq ft

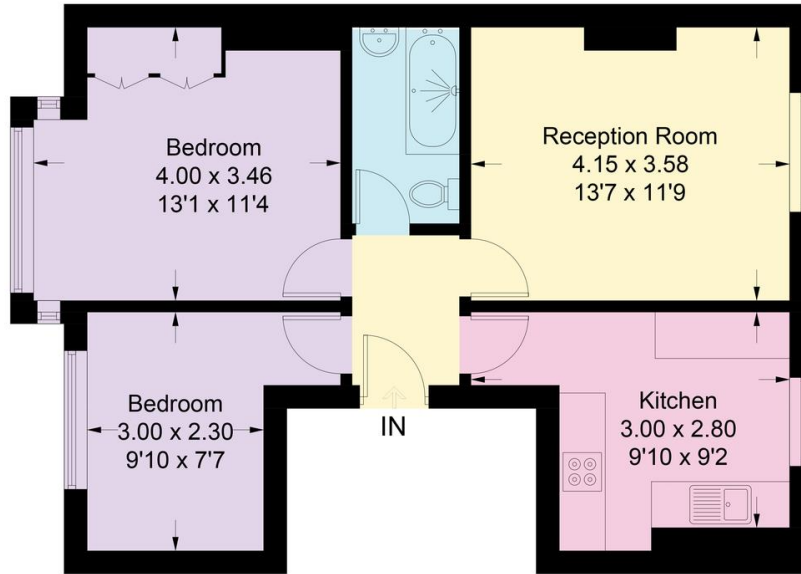


Illustration for identification purposes only, measurements are approximate, not to scale. floorplansUsketch.com © (ID705148)

## EPC

