

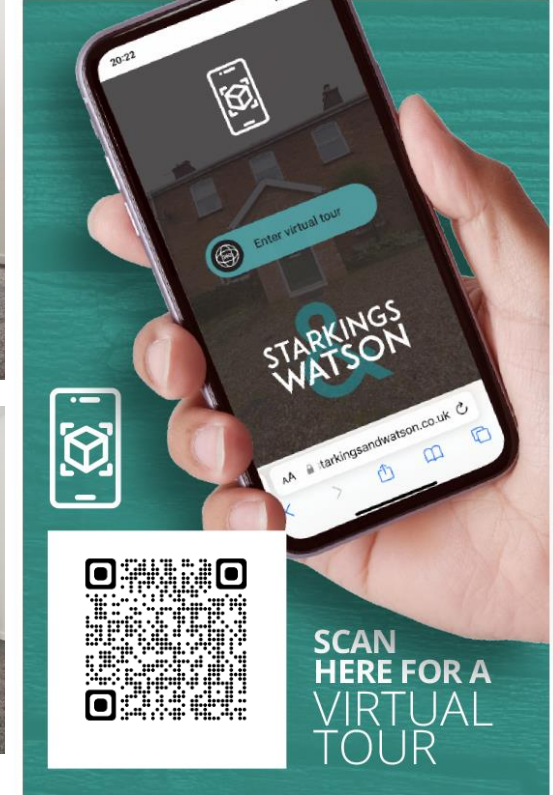
WELLESLEY ROAD

Great Yarmouth NR30 2AR

%tenure% | Energy Efficiency Rating : B

To arrange an accompanied viewing please pop in or call us on 01603 336226

PROPERTY TO LET



arla | propertymark

PROTECTED

naea | propertymark

PROTECTED



For our full list of available properties, or for a FREE INSTANT online valuation visit

starkingsandwatson.co.uk



STARKINGS & WATSON

- Ground Floor Apartment
- Town Centre Location
- Permit Parking
- Bay Fronted Sitting/Dining Room
- Fitted Kitchen with Space for Appliances
- One Double Bedroom
- Modern Shower Room
- Gas Fired Central Heating

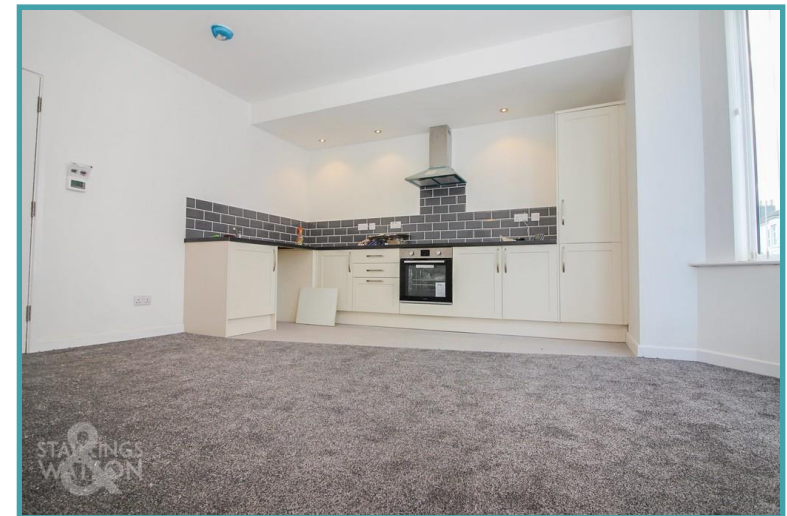
Converted in 2020, this MODERN ground floor apartment offers SPACIOUS ROOMS and a HIGH QUALITY FINISH. Located within a WELL MAINTAINED BUILDING with PERMIT PARKING close by, the property benefits from its own gas fired CENTRAL HEATING SYSTEM. Entering the apartment, a USEFUL HALL offers doors to the BAY FRONTED open plan sitting/dining room and KITCHEN - with space for a fridge freezer and washing machine, MODERN SHOWER ROOM, and to the DOUBLE BEDROOM. Finished in a NEUTRAL DECOR with quality floor coverings, the property is ready to move in.

LOCATION

The property is situated in the heart of Great Yarmouth, situated on the East Coast of Norfolk. The town is located with excellent transport links around the county and into Norwich by both road and rail. The town offers a variety of amenities including schooling, medical services and shopping both in and out of town.

DIRECTIONS

You may wish to use your Sat-Nav (NR30 2AR), but to help you...Upon entering Great Yarmouth from the A149 roundabout passing Asda, continue over the roundabout and straight over the first set of traffic lights. Turn left at the second set of traffic lights onto St Nicholas Road passing the supermarket, which becomes Euston Road. Turn right onto Wellesley Road, where the property can be found on your left hand side, indicated by our To Let board.



To arrange an accompanied viewing please call our Centralised Hub on **01603 336116**



Disclaimer: Whilst every care has been taken to prepare these sales particulars, they are for guidance purposes only. All measurements are approximate are for general guidance purposes only and whilst every care has been taken to ensure their accuracy, they should not be relied upon and potential buyers are advised to recheck the measurements.

Price:



For our full list of available properties, or for a **FREE INSTANT** online valuation visit

starkingsandwatson.co.uk

Floor Plan
Approximate Floor Area
414 sq. ft.
(38.46 sq. m)

Approx. Gross Internal Floor Area 414 sq. ft / 38.46 sq. m

