



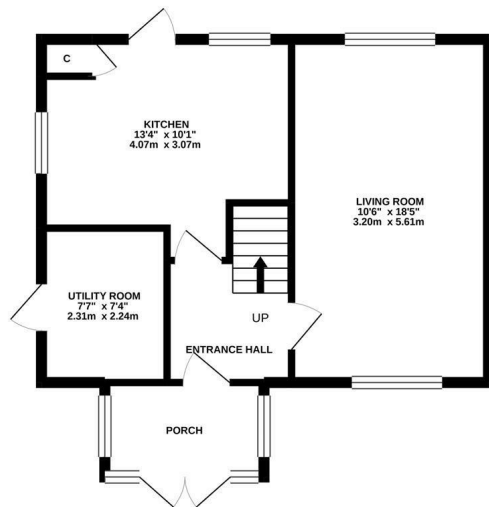
Crowborough Road, Hastings TN35 5EF

Offers in excess of £225,000

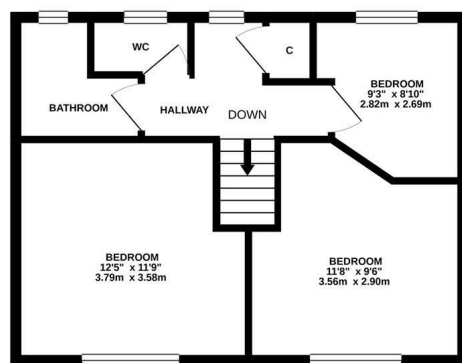


Generous three bedroom END OF TERRACE HOUSE, found just a short stroll away from Hastings Country Park and the local shops at Ore Village. The accommodation here spans two storeys and enjoys generous proportions arranged as a bright, DUAL ASPECT LIVING ROOM while the separate EAT-IN KITCHEN sits at the rear of the property enjoying access out to the enclosed rear garden. There is a also a handy UTILITY ROOM on the ground floor, perfect for storage. There are THREE WELL PROPORTIONED BEDROOMS on the first floor along with a family bathroom and separate cloakroom. The rear garden is mainly laid to lawn with an area of patio, offering the PERFECT SPACE FOR FAMILY LIFE. Boasting FAR REACHING SEA VIEWS from the front of the house this fantastic home is not to be missed.

GROUND FLOOR
480 sq.ft. (44.6 sq.m.) approx.



1ST FLOOR
437 sq.ft. (40.6 sq.m.) approx.



TOTAL FLOOR AREA : 918 sq.ft. (85.3 sq.m.) approx.

Whilst every attempt has been made to ensure the accuracy of the floorplan contained here, measurements of doors, windows, rooms and any other items are approximate and no responsibility is taken for any error, omission or mis-statement. This plan is for illustrative purposes only and should be used as such by any prospective purchaser. The services, systems and appliances shown have not been tested and no guarantee as to their operability or efficiency can be given.
Made with Metropix ©2021

