



jordanfishwick

MANCHESTER
W3



W3, Manchester M1 5ED

Price £369,500



The Property

Video Tour Available- <https://youtu.be/c5mZoGN2FkU>
CASH BUYING INVESTORS ONLY! 4.8% Gross Yield

Fantastic opportunity to buy a large two bedroom DUPLEX PENTHOUSE apartment in W3. Tandem car parking spaces included. Finished with high quality fixtures and fittings, and recently updated bathroom. The apartment in brief comprises; large entrance hallway with downstairs WC. Large lounge/living space with full height windows which overlook the internal courtyard and canal. The kitchen boasts integrated appliances including large fridge, oven, microwave and dishwasher. Stairs to upper floor which leads to large master bedroom, with doors to paved balcony which offers great

views and spans the length of the room. The master bedroom has a large en-suite bathroom with bath and shower, and has fitted wardrobes. The second bedroom which is very generous in size also has its own private shower room and fitted wardrobes, and door access to a separate communal terrace

Directions



- CASH BUYERS ONLY!
- Two Bedroom Penthouse
- Tandem Car Parking Space
- Air Conditioning
- Two Large Double Bedrooms
- Two Ensuite Bathrooms
- Balcony
- Duplex
- Rented at £1490 until July 2022

Postcode - M1 5ED

EPC Rating - C

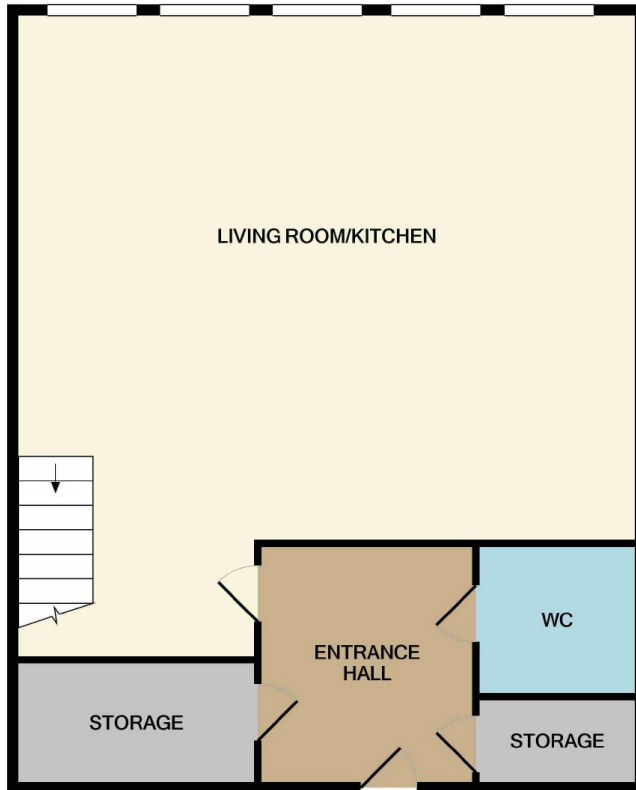
Floor Area - sq ft

Local Authority - Manchester City Council

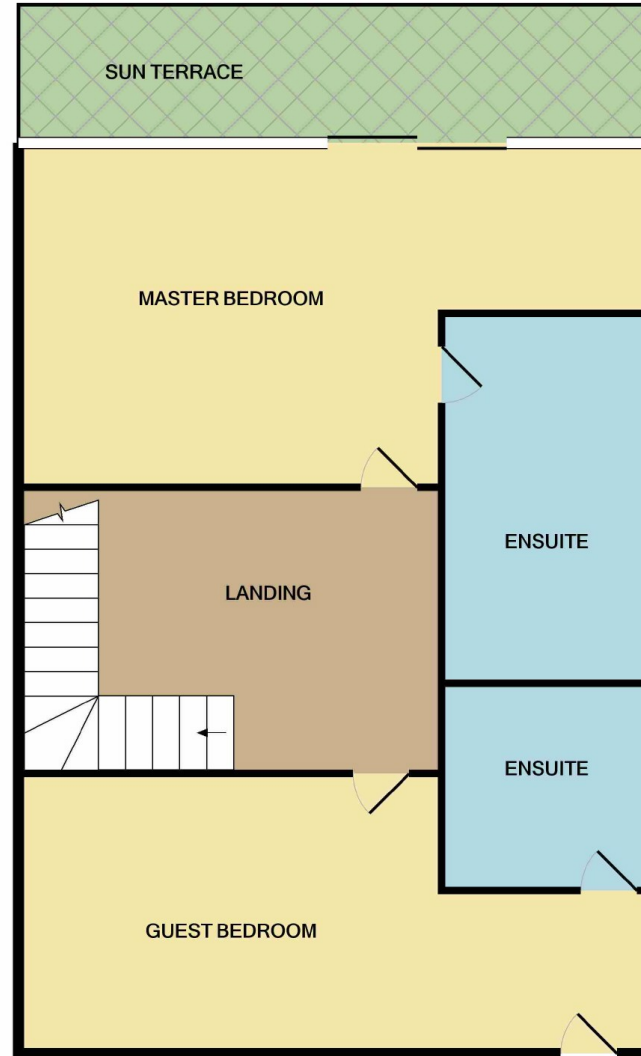
Tax

Council Tax - Band G





GROUND FLOOR



1ST FLOOR

Measurements are approximate. Not to scale. Illustrative purposes only
Made with Metropix ©2021



These particulars are believed to be accurate but they are not guaranteed and do not form a contract. Neither Jordan Fishwick nor the vendor or lessor accept any responsibility in respect of these particulars, which are not intended to be statements or representations of fact and any intending purchaser or lessee must satisfy himself by inspection or otherwise as to the correctness of each of the statements contained in these particulars. Any floorplans on this brochure are for illustrative purposes only and are not necessarily to scale.

Offices also at:
Chorlton | Didsbury | Disley | Glossop | Hale | Macclesfield | Manchester | Sale | Wilmslow | Withington

68 The Arches, Whitworth Street West, Manchester, M1

0161 833 9499

manchester@jordanfishwick.co.uk

www.jordanfishwick.co.uk