



Jordan fishwick

CASTLEFIELD



Castlefield M3 4AY

Price £235,000



The Property

[youtube.com/watch?v=aASMxECWcgw](https://www.youtube.com/watch?v=aASMxECWcgw)
MORTGAGE / FIRST TIME BUYERS / INVESTORS INVITED. (EWS1 IN PLACE)

Jordan Fishwick are delighted to offer a stunning, two double bedroom apartment in this luxury development located on the banks of the River Irwell and only a short stroll from Castlefield and Spinningfields. This fourth floor apartment benefits from fantastic views of the nearby canal from its covered balcony. Accommodation comprises of entrance hallway, open plan living area with high specification kitchen off with range of integrated appliances. Both bedrooms are double with the master offering an en suite shower room. Additional bathroom off the hallway. 24- Hour Concierge. No

parking. Installed in each apartment are dedicated Hyper-optic, fibre-optic, and TV provisions including BT, SKY and Virgin Media.

Tenanted on a rolling contract at £1380 PCM including bills.

Directions



- EWS1 FORM AVAILABLE.
- Two Double Bedrooms
- Fourth Floor
- Spectacular Views
- 24 Hour Concierge
- Balcony
- Bathroom & En-Suite
- EPC Rating B
- Council Tax Band C
- Rented at £1380 PCM Including Bills

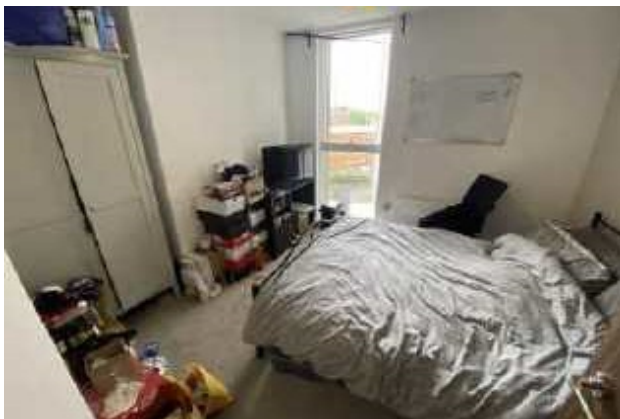
Postcode - M3 4AY

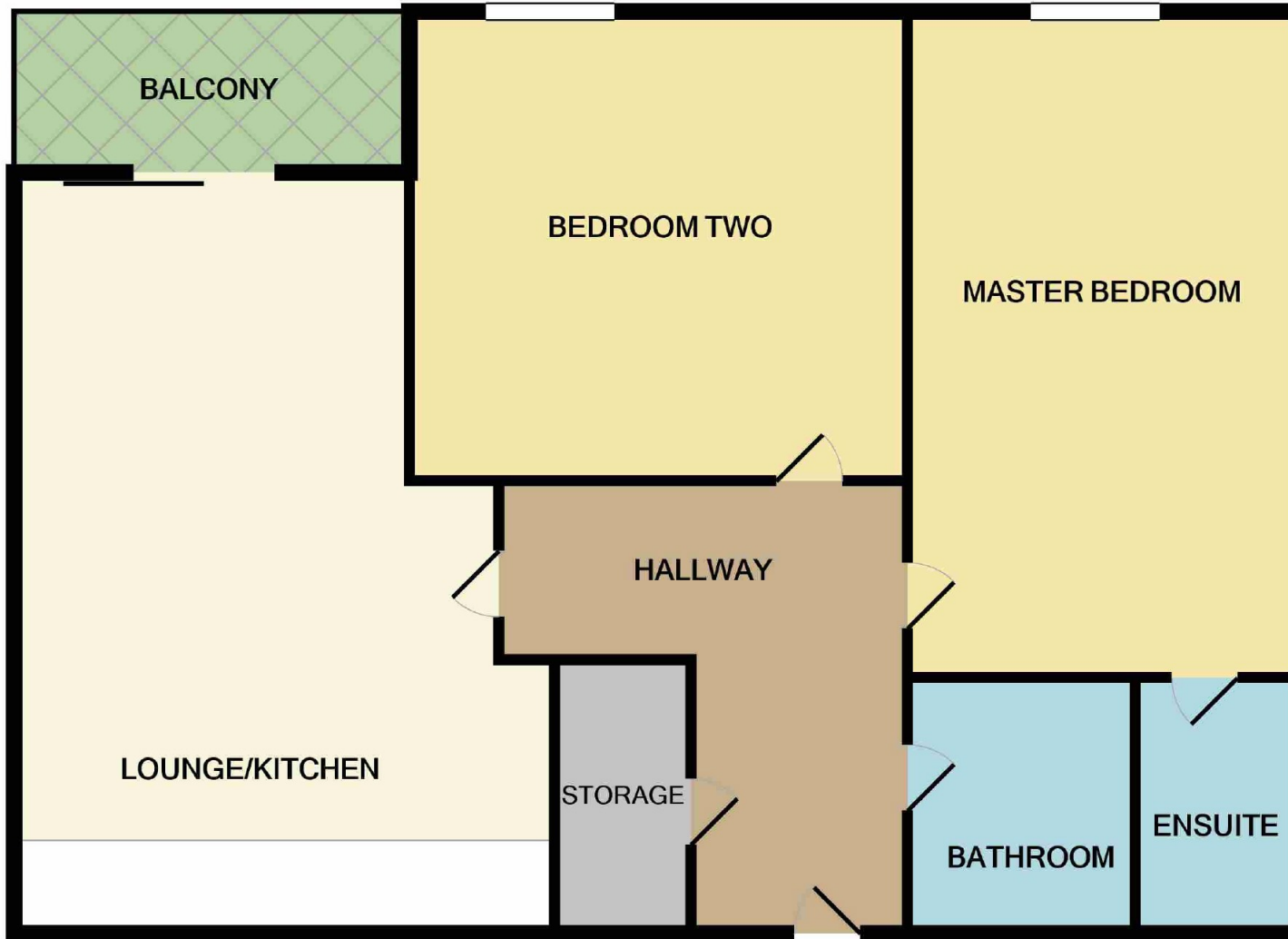
EPC Rating - B

Floor Area - sq ft

Local Authority - Salford Council

Council Tax - Band C





Measurements are approximate. Not to scale. Illustrative purposes only
Made with Metropix ©2021



These particulars are believed to be accurate but they are not guaranteed and do not form a contract. Neither Jordan Fishwick nor the vendor or lessor accept any responsibility in respect of these particulars, which are not intended to be statements or representations of fact and any intending purchaser or lessee must satisfy himself by inspection or otherwise as to the correctness of each of the statements contained in these particulars. Any floorplans on this brochure are for illustrative purposes only and are not necessarily to scale.

Offices also at:
Chorlton | Didsbury | Disley | Glossop | Hale | Macclesfield | Manchester | Sale | Wilmslow | Withington

68 The Arches, Whitworth Street West, Manchester, M1

0161 833 9499

manchester@jordanfishwick.co.uk
www.jordanfishwick.co.uk