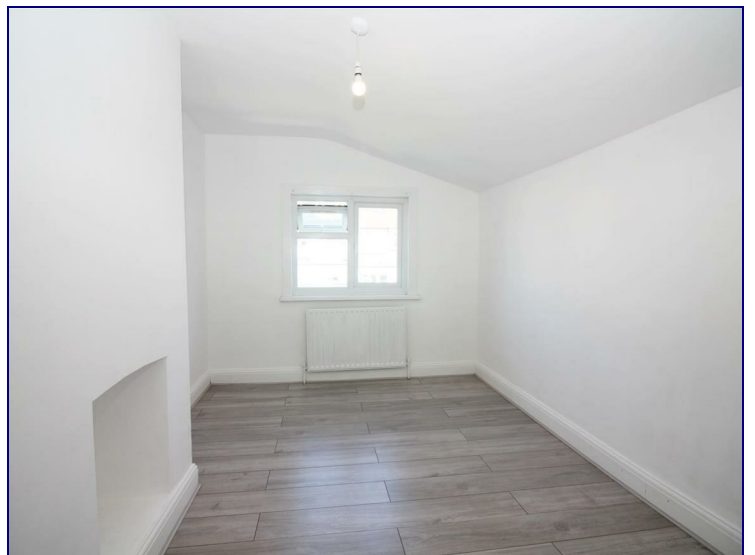


Trulock Road, London, N17 0PH

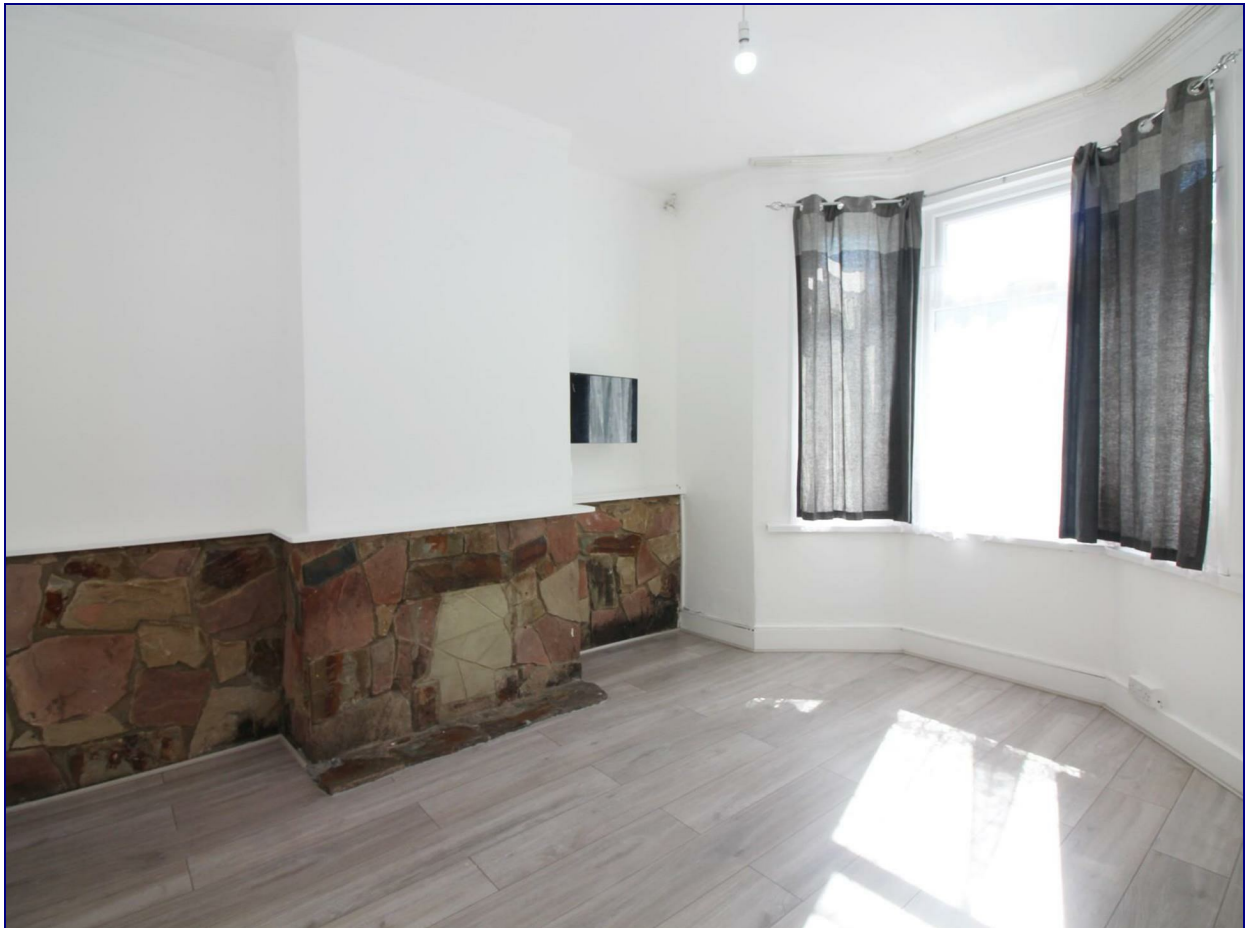


£1,700

NEW TO THE MARKET!!

A LARGE 3/4 Bedroom house next to Tottenham Hotspur Stadium This property has 3 DOUBLE BEDROOMS and offers part furnished, SEPARATE KITCHEN and a good size garden!!

AVAILABLE NOW!!



Energy Efficiency Rating		
	Current	Potential
<i>Very energy efficient - lower running costs</i>		
(92 plus) A		
(81-91) B		
(69-80) C		
(55-68) D		
(39-54) E		
(21-38) F		
(1-20) G		
<i>Not energy efficient - higher running costs</i>		
England & Wales	EU Directive 2002/91/EC	

Environmental Impact (CO ₂) Rating		
	Current	Potential
<i>Very environmentally friendly - lower CO₂ emissions</i>		
(92 plus) A		
(81-91) B		
(69-80) C		
(55-68) D		
(39-54) E		
(21-38) F		
(1-20) G		
<i>Not environmentally friendly - higher CO₂ emissions</i>		
England & Wales	EU Directive 2002/91/EC	

