



MILES ESTATE AGENTS

27 Bridgwater Road
Taunton TA1 2DP



A lovely, extended 1930's 3 bedroom semi detached house with fabulous kitchen/dining living space and mature gardens in this convenient location for both the County town and access to the M5. Refitted bathroom and ground floor shower room, utility and lots of parking. Early viewing highly recommended.



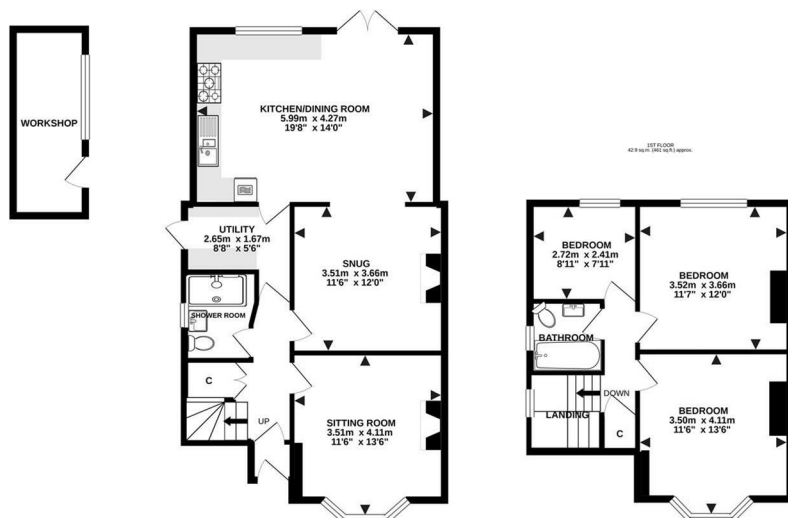


Features:

- Entrance Hall
- Good Size Sitting Room
- Cosy Snug Opening To
Fantastic Extended Kitchen/
Dining Room
- Utility Room
- Ground Floor Shower Room
- 3 Bedrooms
- Refitted Bathroom
- Large Mature Gardens
- Useful Workshop
- Off Road Parking for Several
Cars
- Council Tax Band C



Energy Efficiency Rating		
	Current	Potential
Very energy efficient - lower running costs		
(92-100) A		
(81-91) B		
(69-80) C		
(55-68) D		
(39-54) E		
(21-38) F		
(1-20) G		
Not energy efficient - higher running costs		
England & Wales		
	EU Directive 2002/91/EC	



Viewings strictly through the selling agents:

Miles Estate Agents

2 Piffin Lane, Bishops Lydeard, Taunton, Somerset, TA4 3AS

Tel: 01823 470 500

lydeard@milesestateagents.co.uk

www.milesestateagents.co.uk

rightmove

Zoopla.co.uk

OnTheMarket.com

MILES ESTATE AGENTS

