

Woodholls



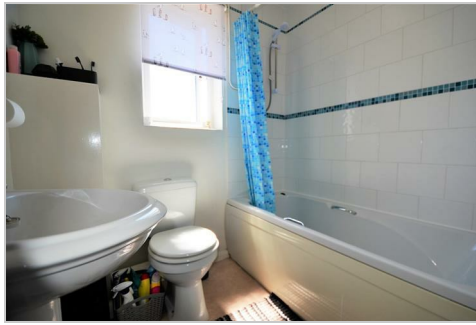
Batchelor Close, Aylesbury, HP20 2BX **£750 Per month**

A well-presented 1 bedroom cluster house within about a mile from the Town Centre and not far from open countryside.

- Replacement UPVC double glazed windows
- Gas to radiator central heating
- Bright living room
- Fitted kitchen with built in oven and hob
- Double bedroom with built in wardrobes
- Bathroom with shower over bath

44 Buckingham Street, Aylesbury, Bucks, HP20 2LL

Telephone: 01296 433 393 Email: info@woodholls.co.uk Website: www.woodholls.co.uk



Energy Efficiency Rating		
	Current	Potential
Very energy efficient - lower running costs		
(92 plus) A		91
(81-91) B		
(69-80) C		65
(55-68) D		
(39-54) E		
(21-38) F		
(1-20) G		
<i>Not energy efficient - higher running costs</i>		
England & Wales		EU Directive 2002/91/EC
Environmental Impact (CO ₂) Rating		
	Current	Potential
Very environmentally friendly - lower CO ₂ emissions		
(92 plus) A		
(81-91) B		
(69-80) C		
(55-68) D		
(39-54) E		
(21-38) F		
(1-20) G		
<i>Not environmentally friendly - higher CO₂ emissions</i>		
England & Wales		EU Directive 2002/91/EC

44 Buckingham Street, Aylesbury, Bucks, HP20 2LL

Telephone: 01296 433 393 Email: info@woodholls.co.uk Website: www.woodholls.co.uk