

# Regency Court

Newton Abbott, Devon, TQ12

Omar Westfield (40x20)





# £180,000

*Stover, Newton Abbott, Devon, TQ12*

The Omar Westfield bungalow park home features a large dining area with extending dining table, and a fully fitted, galley-style kitchen including a full array of integrated appliances. The spacious lounge area provides plenty of room to sit back and relax, and the fitted bedrooms in soft tones come with coordinated soft furnishings and the master bedroom comes not only with a stylish en-suite shower room but with a large walk-in-wardrobe.

This secure, gated development boasts an indoor swimming pool, a coffee lounge and tea gardens. There are many beautiful coastal walks leading directly from the development as well as numerous other pursuits nearby such as fishing, horse riding, cycling, sailing and golf to mention but a few.

Reculver is a village and coastal resort about 3 miles (5 km) east of Herne Bay in southeast England enjoying a beach ideal for those wishing to explore rock pools and fossil hunting. Reculver is also ideal for fishing, bird watching, walking and bike rides as there are some spectacular views. Nearby is Herne Bay, a traditional, friendly seaside town, perfect for families and fun days out.

- Brand new home
- Fully fitted kitchen
- Retirement property
- Over 45s
- Gated and secure community
- Pet-friendly
- 12 month leisure license
- Community living
- Part Exchange available

2x  2x 

**100% Market Value  
Part Exchange with  
Quickmove Properties**

Home exchange example:

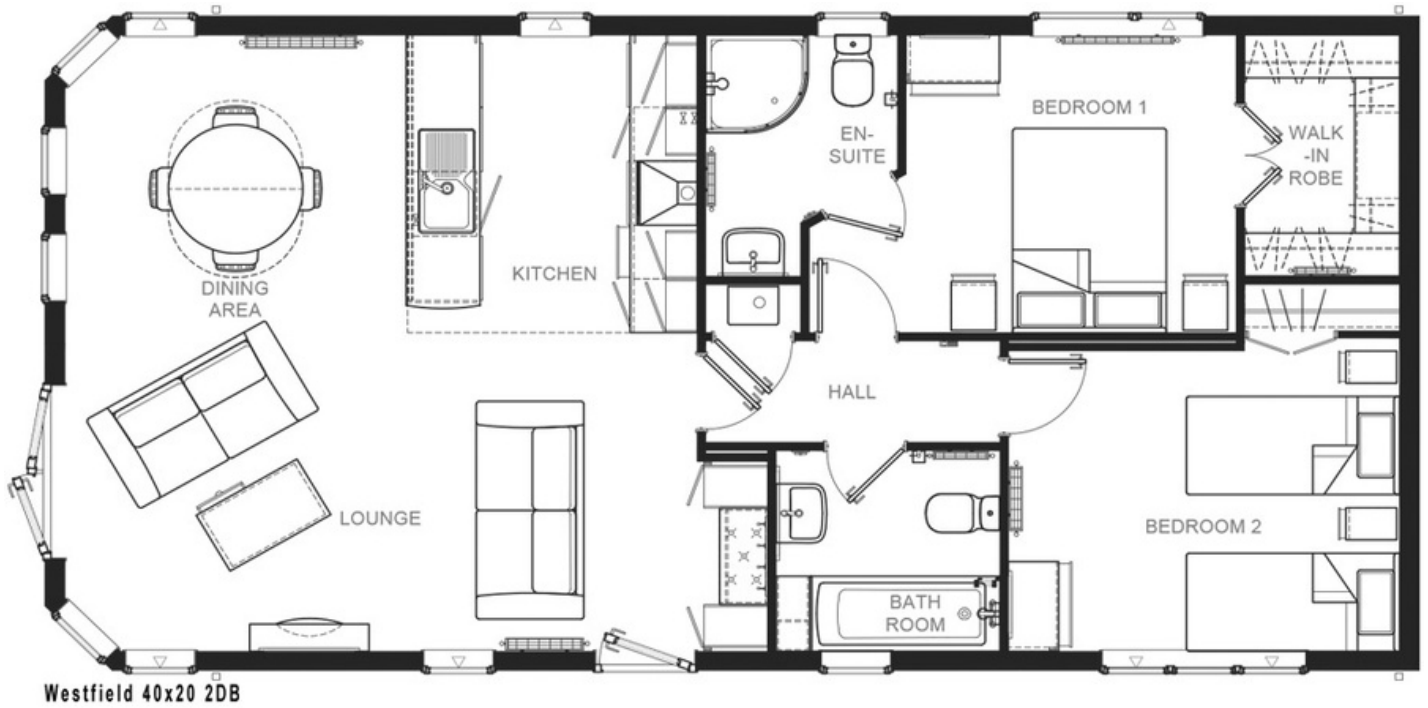
Value of your existing home....£300,000

Price of new park home.....£225,000

Cash for you to enjoy.....£75,000



# Floor Plan



## CONTACT DETAILS

0800 954 1288

[sales@sellmygroup.co.uk](mailto:sales@sellmygroup.co.uk)

