



THE KEY TO YOUR NEXT MOVE

www.keystateagents.com

To Let

Tel: 024 7632 2022



£700 Guide Price

220 Sunnybank Avenue, Baginton, Coventry CV3 4DT



E-mail: lettings@keystateagents.com

KEY ESTATE AGENTS

Website: www.keystateagents.com

Freshly decorated, first floor maisonette with modern kitchen and bathroom. Enclosed private garden with detached garage to the rear of the property, very well presented.

Good location for city centre and ease of access to road network.

A Security Deposit of £807 is required, of which £161 is payable upon acceptance as a Holding Deposit.

Entrance

Stairs leading to first floor living area with doors leading to kitchen, lounge, bedrooms and bathroom

Living Room 14'3" x 11'1" (4.36 x 3.4)



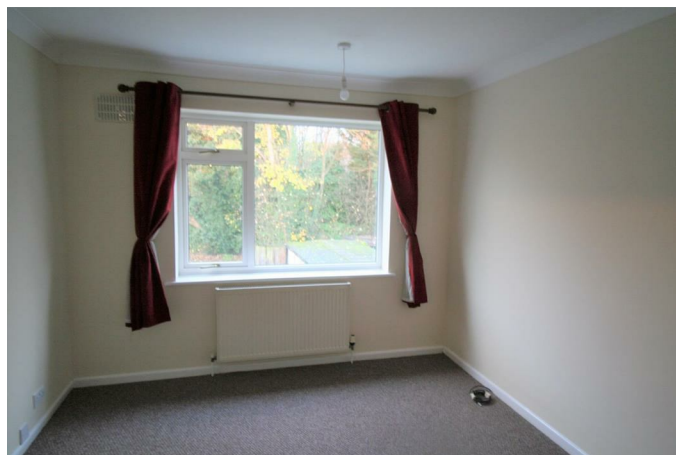
Spacious lounge with double doors leading to balcony.

Kitchen 10'1" x 6'3" (3.09 x 1.93)



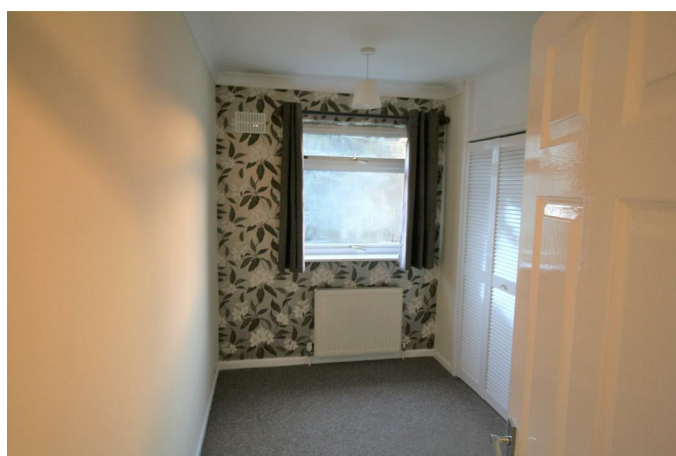
Modern kitchen with base and wall units. Cooker and hob with space for a fridge.

Master Bedroom 13'1" x 10'2" (3.99 x 3.12)



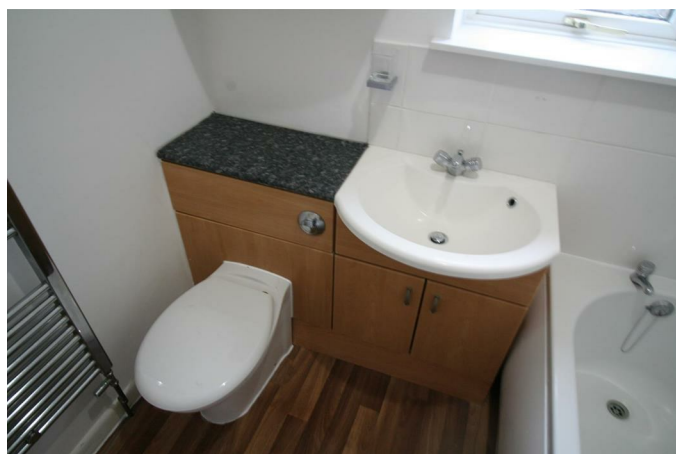
Good sized double bedroom

Second Bedroom 11'3" x 6'7" (3.44 x 2.02)



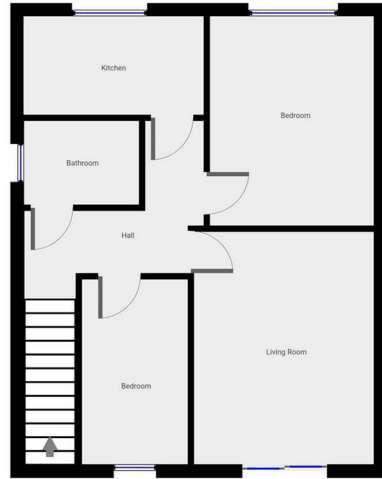
Bedroom with built in wardrobe

Bathroom



Modern bathroom with wc, sink, bath with shower over

Floor Plan

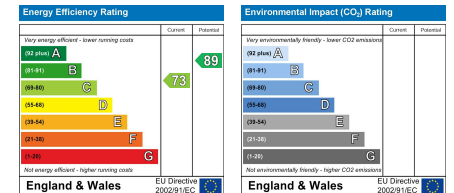


THIS FLOORPLAN IS PROVIDED WITHOUT WARRANTY OF ANY KIND. SENSOPHA DISCLAIMS ANY WARRANTY INCLUDED, WITHOUT LIMITATION, SATISFACTORY QUALITY OR ACCURACY OF DIMENSIONS.

Area Map



Energy Efficiency Graph



HAVE YOU GOT A PROPERTY TO SELL OR LET?

KEY Estate Agents offer a complete and professional service to Home Owners and Landlords throughout the **Nuneaton, Bedworth** and **Hinckley** and surrounding villages.

If you are thinking of selling or letting your home we would be delighted to offer you a **Free Valuation** with **No Obligation** whatsoever.

Please call us today for details on all of our services, along with information about our competitive fee structure.

KEY Estate Agents

2 The Courtyard, Goldsmith Way, Eliot Business Park, Nuneaton CV10 7RJ

lettings@keystateagents.com



Zoopla.co.uk



rightmove



These particulars do not constitute an offer contract and have been prepared for guidance only, and must not be relied upon as statement of fact.

Area measurements or distances are given as guidance only and are not precise. Boundaries are subject to verification. Appliances and fittings have not been tested. Floor plans are not drawn to scale. The inclusion of any fixtures and fittings are subject to the vendor's confirmation, subject to contract. Internal photographs may well show furnishings, fixtures and fittings which are not included in the sale.



024 7632 2022