

50 St James Street
Brighton
East Sussex
BN2 1QG

T 01273 915400
E michael.cooley@tpsb.co.uk



CHAIN PIER HOUSE - BEDROOM

Marine Parade

, Brighton, BN2 1PE

£1,350 Per month

This two bedroom sea view flat is situated in the very sought after development of Chain Pier House. It has two good size double bedrooms, and a semi open plan living room kitchen.

The property has an amazing sea view from the living room and one of the bedrooms.

The flat would ideally suit a couple of professional sharers, or a couple working in the City.

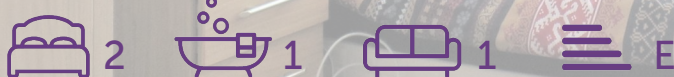
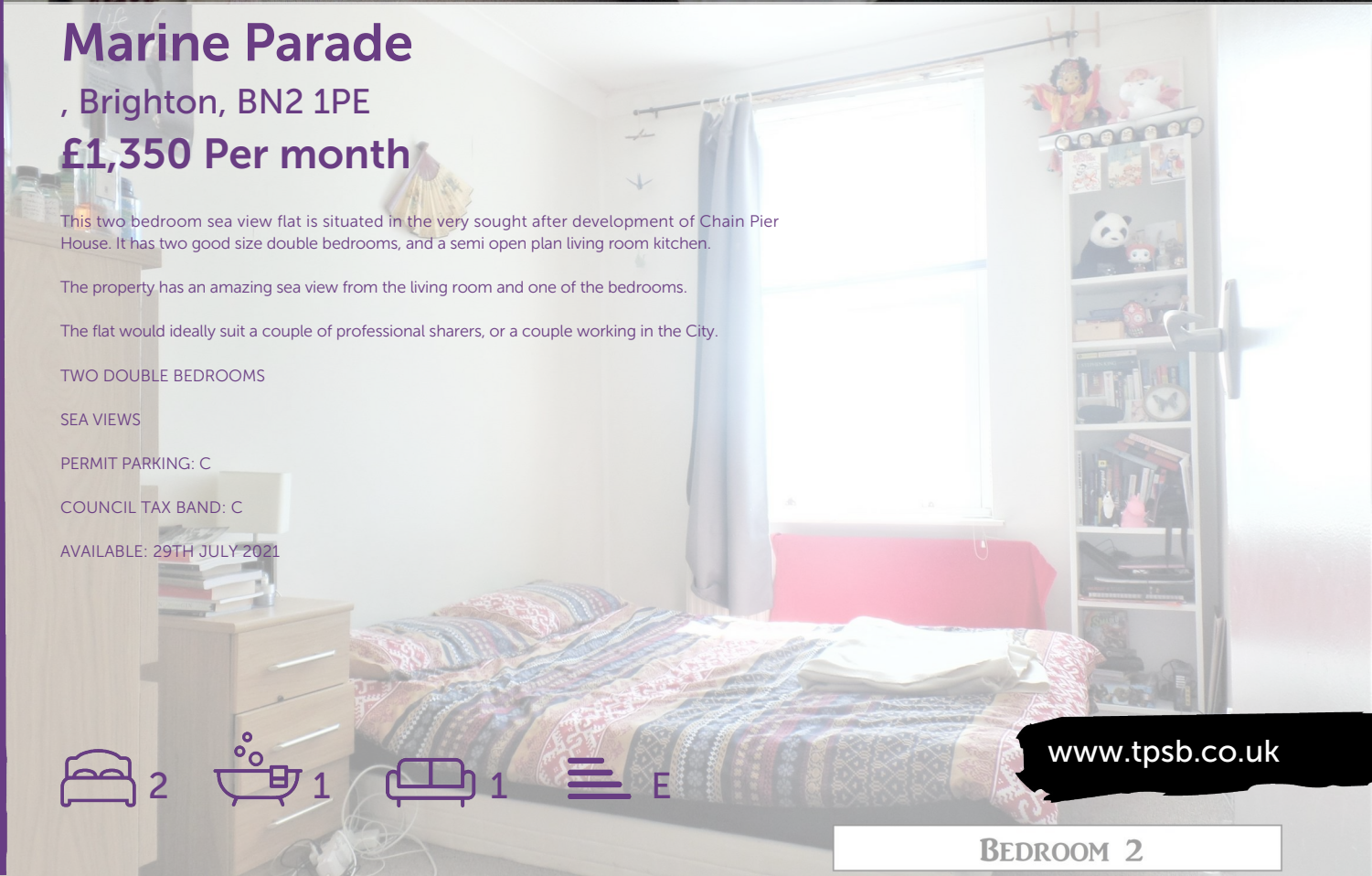
TWO DOUBLE BEDROOMS

SEA VIEWS

PERMIT PARKING: C

COUNCIL TAX BAND: C

AVAILABLE: 29TH JULY 2021



www.tpsb.co.uk

BEDROOM 2

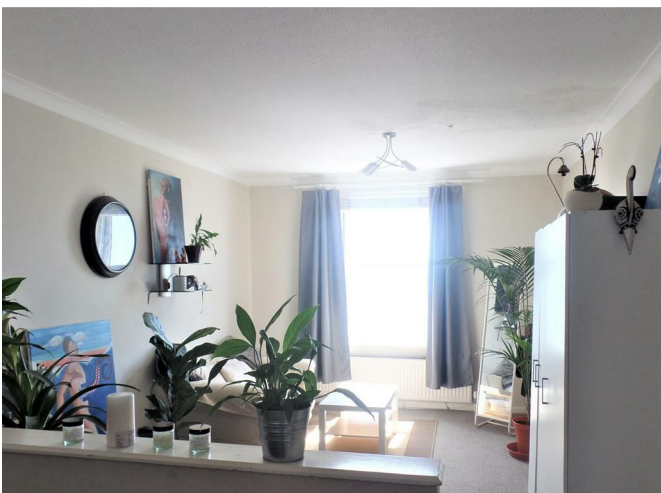
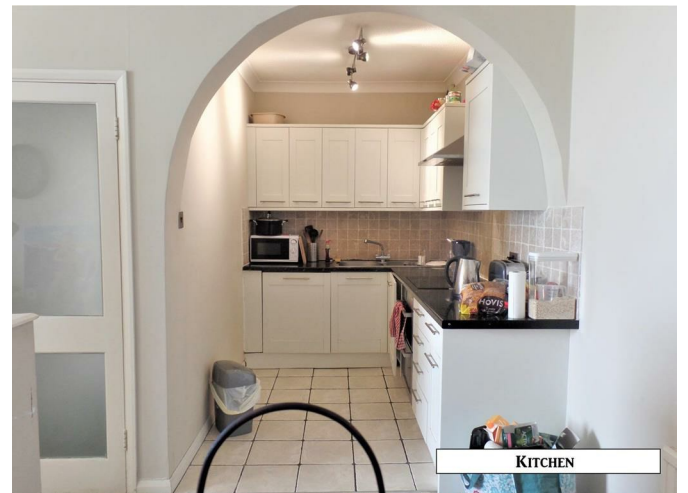
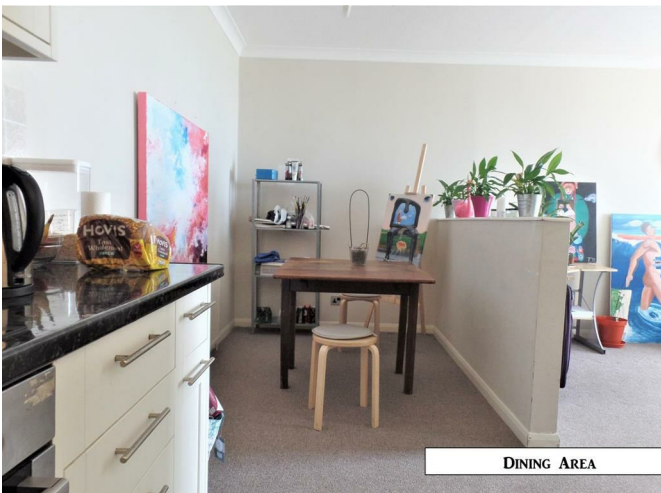
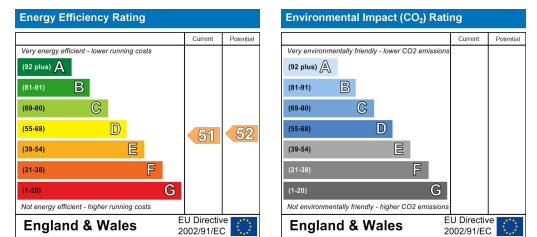
Floor Plan



Area Map



Energy Efficiency Graph



These particulars, whilst believed to be accurate are set out as a general outline only for guidance and do not constitute any part of an offer or contract. Intending purchasers should not rely on them as statements of representation of fact, but must satisfy themselves by inspection or otherwise as to their accuracy. No person in this firm's employment has the authority to make or give any representation or warranty in respect of the property.