

THOMAS
MERRIFIELD

SALES LETTINGS



- Two bedrooms
- Bathroom
- Living room with ornamental fireplace
- On street parking

6 The Row, Bletchington, Kidlington, OX5 3BZ

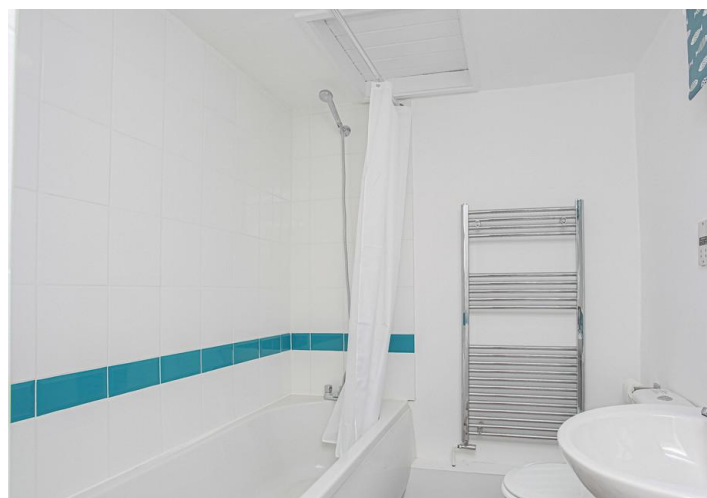
£1,100 pcm - Available Available Now

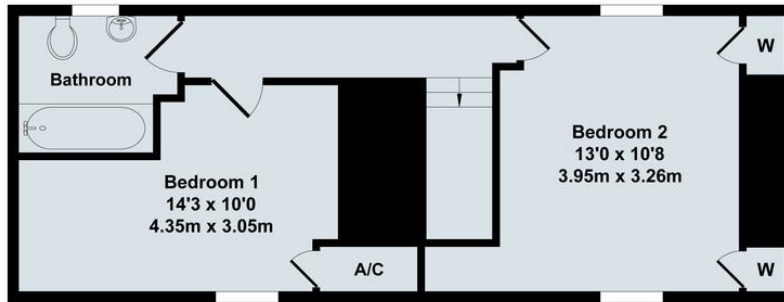
Located in the centre of the village, a two bedroom mid terrace cottage recently re-carpeted and redecorated throughout and only a short drive from the A34 and Oxford Parkway station. Bathroom with shower over, Gas CH, Living room with ornamental fireplace, Large rear garden. On street parking

Property Description

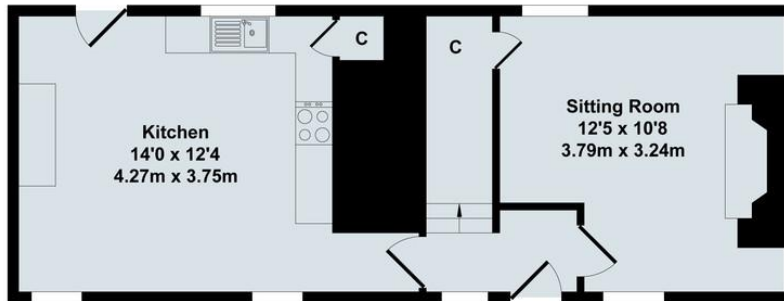
Located in the centre of the village, a two bedroom mid terrace cottage recently re-carpeted and redecorated throughout and only a short drive from the A34 and Oxford Parkway station. Two double bedrooms with fitted wardrobes, Bathroom with shower over, Kitchen/Breakfast room with cooker, Living room with ornamental fireplace, Gas CH, Large rear garden. On street parking







First Floor



Ground Floor



%epcGraph_c_1_334%

Total Approx. Floor Area 843 Sq.Ft. (78.30 Sq.M.)

All items illustrated on this plan are included in the "Total Approx Floor Area"

Agents Note: Whilst every care has been taken to prepare these particulars, they are for guidance purposes only. All measurements are approximate and are for general guidance purposes only and whilst every care has been taken to ensure their accuracy, they should not be relied upon and potential buyers/tenants are advised to check the measurements

Holyfield House, 1 Walton Well Road, Oxford, OX2 6ED

T: 01865 515900 E: info@tmlettings.co.uk

www.tmlettings.co.uk

