



Tower One, The Corniche, Nine Elms
London SE1

GARTONJONES.COM



Tower One, The Corniche, Nine Elms London, SE1

GARTON JONES.COM

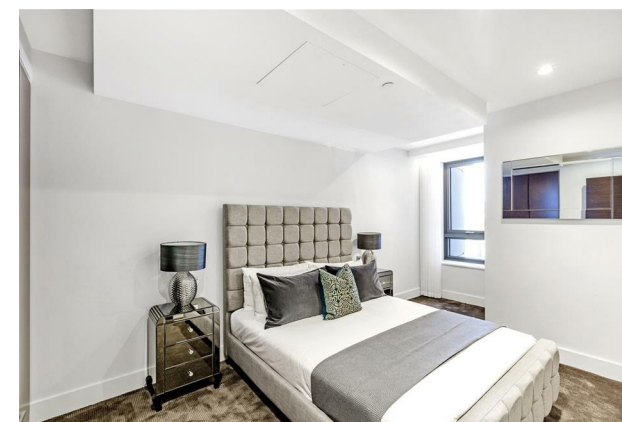
9 Albert
Embankment
London
SE1 7SP

Lettings:
+44 (0) 20 7735 1888
nineelms@gartonjones.com
www.gartonjones.com

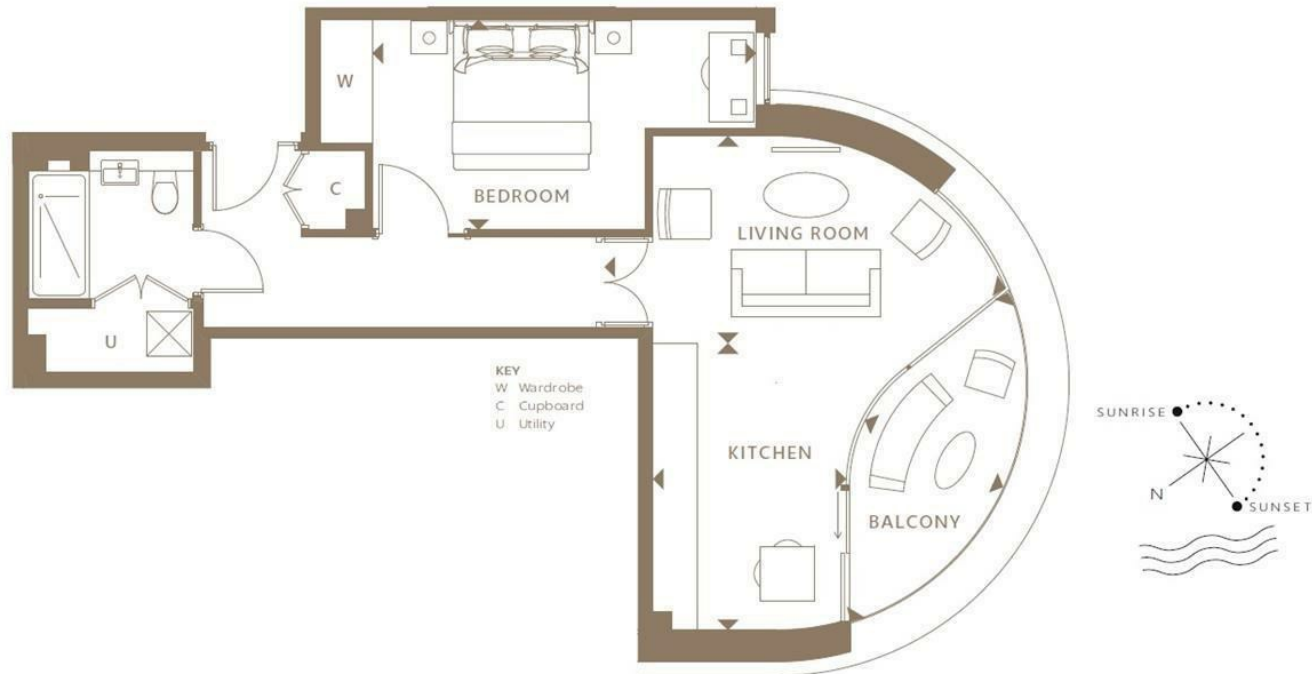
£620 Per Week

A brand new 1 double bedroom apartment to rent of approx. 564sq.ft (52sq.m) of the Corniche, a landmark development by St James, located on the South Bank of the River Thames in between Lambeth Bridge and Vauxhall Bridge. This beautifully finished property is well located within the development and offers partial views towards the river from its private balcony, additionally there is an open plan reception room with a fully fitted interior designed kitchen with Miele appliances, a luxury bathroom suite and good storage including a utility cupboard and fitted wardrobes to the bedroom. Designed by the internationally acclaimed architectural practice, Foster and Partners, residents will further benefit from a 24 hour concierge service, a Skyline Club Lounge with a terrace enjoying amazing London views, there is an extensive health and wellness suite offering spa treatments, a gymnasium with private training facilities and an indoor infinity pool and screening room. You will be within easy reach of many local shops, bars and restaurants and transport links are also excellent.

- 564sq.ft (52sq.m)
- 1 Double Bedroom
- Open Plan Reception Room
- Kitchen with Miele Integrated Appliances
- Balcony with River Thames Views
- 24 Hour Concierge
- Residents Gym
- Sky Lounge, Pool & Screening Room
- Close to Local Shops, Bars & Restaurants
- Well Located for Transport Links



ONE BEDROOM APARTMENT



TYPE 5

Living Room	5.35 x 2.77m	17'7" x 9'1"
Kitchen	2.58 x 3.83m	8'6" x 12'7"
Bedroom	5.12 x 2.80m	16'10" x 9'3"
Balcony	4.84 x 2.01m	15'11" x 6'7"
Total Internal Area	52.46 m²	564.6 ft²
Total External Area	6.24 m²	67.1 ft²

