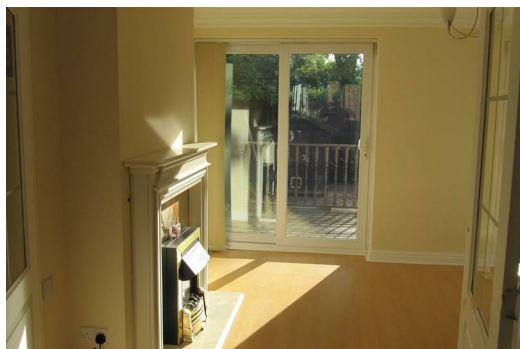




SYMONDS + GREENHAM

Estate and Letting Agents



3 Wadhurst Close, Hull, East Yorkshire HU7 6BL

£550


CALL NOW TO VIEW!
AVAILABLE NOW!!


We are pleased to offer this superb spacious 3 bedroom mid-terraced house, in excellent condition for let. Re-furnished to a high standard, it boasts a kitchen diner, spacious lounge leading onto the garden, 3 bedrooms and upstairs bathroom. This property has full gas-fired central heating, and is fully double glazed. Situated very close to the Sutton Fields Industrial Estate, early viewing is highly recommended.

There is a one week holding deposit on the property of £120 which is refunded or deducted from the first months rent following successful referencing. Deposit is the equivalent of 5 weeks rent in and so full cost following successful referencing for the property would be £1130.

Council Tax Band - A

EPC rating - C

| Energy Efficiency Rating | | |
|---|-------------------------|---|
| | Current | Potential |
| Very energy efficient - lower running costs | | |
| (92 plus) A | | |
| (81-91) B | | |
| (69-80) C | | |
| (55-68) D | | |
| (39-54) E | | |
| (21-38) F | | |
| (1-20) G | | |
| Not energy efficient - higher running costs | | |
| England & Wales | EU Directive 2002/91/EC |  |

| Environmental Impact (CO ₂) Rating | | |
|---|-------------------------|---|
| | Current | Potential |
| Very environmentally friendly - lower CO ₂ emissions | | |
| (92 plus) A | | |
| (81-91) B | | |
| (69-80) C | | |
| (55-68) D | | |
| (39-54) E | | |
| (21-38) F | | |
| (1-20) G | | |
| Not environmentally friendly - higher CO ₂ emissions | | |
| England & Wales | EU Directive 2002/91/EC |  |

