



36A Stonard Road , London, N13 4DP

****New Instruction**** Easy Properties London Ltd very pleased to offer this ground floor 2 bedroom with garden area in Winchmore N13.

2 Bedroom with garden and unfurnished property, please note white goods will no be provided. 1 double and 1 single bedroom, reception with laminate flooring through double glazed windows and gas central heating and kitchen.

Viewing is highly recommended, for more information and viewing please get in touch with our letting team

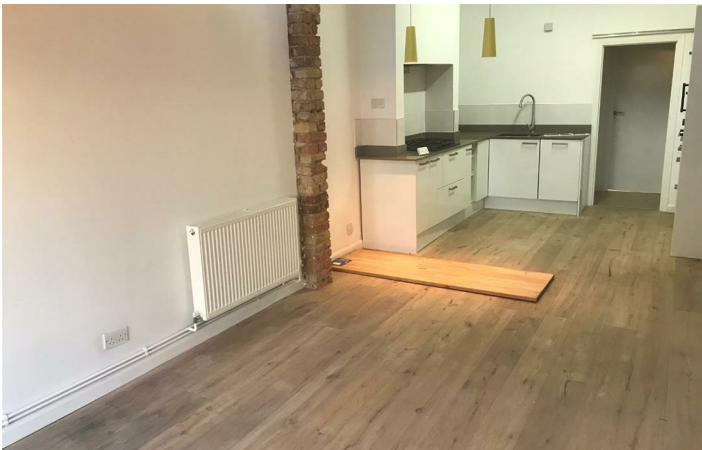
£1,375 Per Month

36A Stonard Road

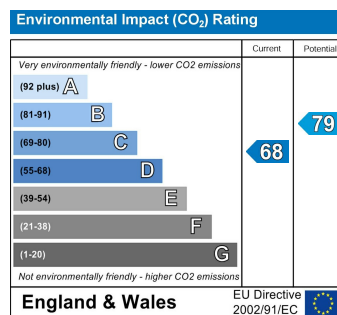
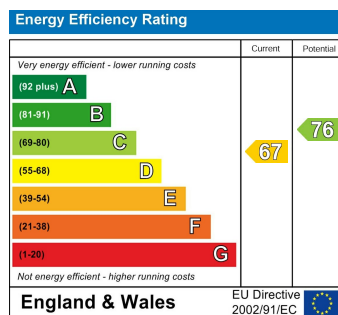
, London, N13 4DP



Directions



Area Map



These particulars, whilst believed to be accurate are set out as a general outline only for guidance and do not constitute any part of an offer or contract. Intending purchasers should not rely on them as statements of representation of fact, but must satisfy themselves by inspection or otherwise as to their accuracy. No person in this firm's employment has the authority to make or give any representation or warranty in respect of the property.

