



we are  
morfittsmith

Stonecliffe Road,  
Woodthorpe,  
Sheffield,  
S2 1PW



**An impressive 3-bed home in the leafy heart of south-east Sheffield: Stonecliffe Road.**

With copious living space and three double bedrooms, this charming property would make an ideal family home.





### **Time to explore.**

Stonecliffe Road can be found in Woodthorpe, a delightful community in southeast Sheffield. Woodthorpe enjoys enviable proximity to not only City Road but also the Sheffield Parkway. The superb convenience of these transport links makes Stonecliffe Road a fantastic spot for commuters or families doing the school run. There are some delightful green spaces in the local area, including Manor Fields Park, Castle View Park, The Wedge Pocket Park, and the beautiful Woodthorpe Ravine. This grants you the freedom to embrace or escape urban living whenever you please, one of the greatest appeals of Sheffield as a home. Local amenities include a range of schools, pubs and restaurants, and lovely local businesses.

## Step inside your new home.

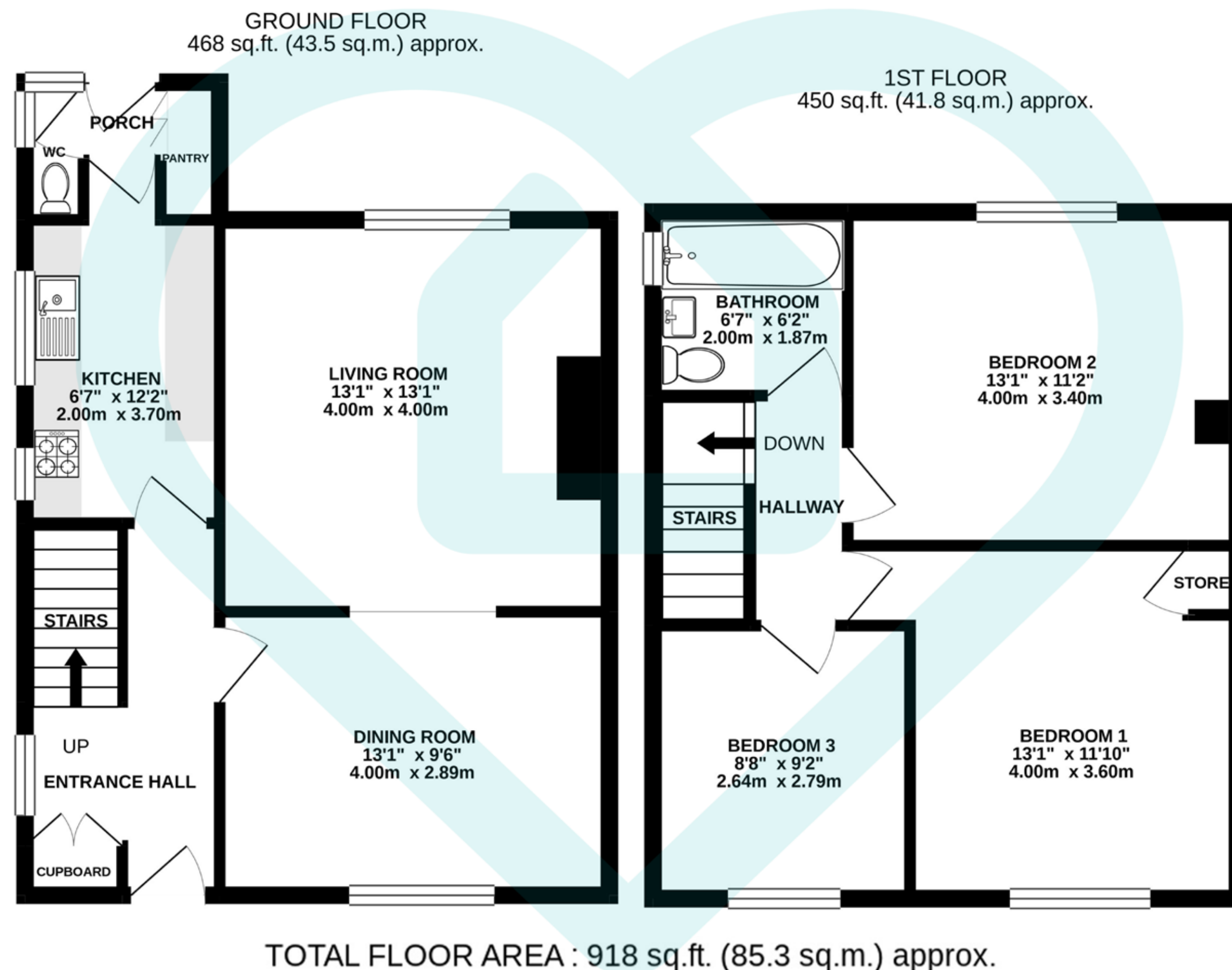
You enter the property into a broad hallway with fitted storage and stairs leading to the first floor. To your right is the dining room with attractive wooden flooring, a large window giving you plenty of natural light, and floorspace enough for a large dining table. A broad opening connects this space to the living room, making this an ideal spot for social events or spending time as a family. The living room is a fantastic size with the same modern décor as the dining room and large alcoves perfect for storage or entertainment systems. There is abundant space for comfy seating, affording you an ideal spot to relax and unwind. Completing the ground floor are the kitchen and porch to the rear.

The kitchen is a lengthy galley layout with stylish design, integrated appliances, lots of elegant worktops for meal prep. This leads into the porch, branching off which you will find a handy WC and pantry for food storage. The porch door opens into the garden where you will find a concrete courtyard leading up to a flagged terrace perfect for outdoor dining. Beyond this is an extensive elevated lawn framed with trees and shrubs, ideal for children to play on. The first floor of Stonecliffe Road encompasses three bedrooms and the family bathroom. All three rooms boast a smart finish and can accommodate a double bed, storage solutions, and more. The family bathroom features a pristine three-piece suite with a practical shower over the bath and storage under the sink.









Score	Energy rating	Current	Potential
92+	A		
81-91	B		83   B
69-80	C	70   C	
55-68	D		
39-54	E		
21-38	F		
1-20	G		

This floor plan is for illustrative purposes only. All measurements and layouts are approximations and do not necessarily capture the precise specifications of the property. No responsibility is taken for any error, omission, or misstatement.  
We always recommend viewing in person to confirm the exact floor



IMPORTANT: we would like to inform prospective purchasers that these sales particulars have been prepared as a general guide only, A detailed survey has not been carried out, nor the services, appliances and fittings tested. Room sizes should not be relied upon for furnishing purposes and are approximate. If floor plans are included, they are for guidance only and illustration purposes only and may not be to scale. If there are any important matters likely to affect your decision to buy, please contact us before viewing the property.



The MorfittSmith Building,  
67 Middlewood Road,  
Sheffield, S6 4GX



0114 232 1764



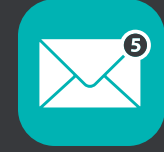
[www.morfittsmith.co.uk](http://www.morfittsmith.co.uk)



[sales@morfittsmith.co.uk](mailto:sales@morfittsmith.co.uk)



[lettings@morfittsmith.co.uk](mailto:lettings@morfittsmith.co.uk)



[newhomes@morfittsmith.co.uk](mailto:newhomes@morfittsmith.co.uk)



@morfittsmith



@morfittsmith



MorfittSmith Estate & Letting Agent



# morfittsmith



## sales | lettings | new homes

---